



THE GLOBAL STANDARD
FOR LIVESTOCK DATA

Interbeef Strategic Roadmap



3 March 2025

1. Executive Summary

The Interbeef Strategic Roadmap provides a structured framework for the future development of genetic and genomic evaluations in the global beef industry at the Interbull Centre, under the ICAR umbrella. It is designed to ensure the long-term sustainability, relevance, and financial viability of Interbeef's services. This roadmap has been developed in response to feedback from members and reflections from the ICAR Board, with the primary objective of aligning Interbeef's offerings with the evolving needs of stakeholders.

Key Objectives:

- **Enhancing Genetic Evaluations:** Enable the integration of international estimated breeding values (EBVs) into national evaluations and inclusion of more trait groups, e.g., fertility.
- **Expanding New Services:** Transition to single-step genomic and multibreed evaluations to enhance accuracy and relevance. Broaden the range of traits evaluated to better reflect users' needs, including beef-on-dairy, and other traits.
- **Expanding Data Sharing:** Develop platforms / protocols for genotype and phenotype (e.g., pedigree, performance or genetic traits) exchange, leveraging the GenoEx-GDE and IDEA platforms to enhance data-sharing capabilities across service users.
- **Strengthening Engagement:** Improve communication and collaboration with existing and potential service users to maximise adoption and participation in Interbeef evaluations.
- **Ensuring Financial Sustainability:** Review and refine the fee model to ensure equitable contributions from stakeholders while maintaining service quality and reinvestment opportunities.

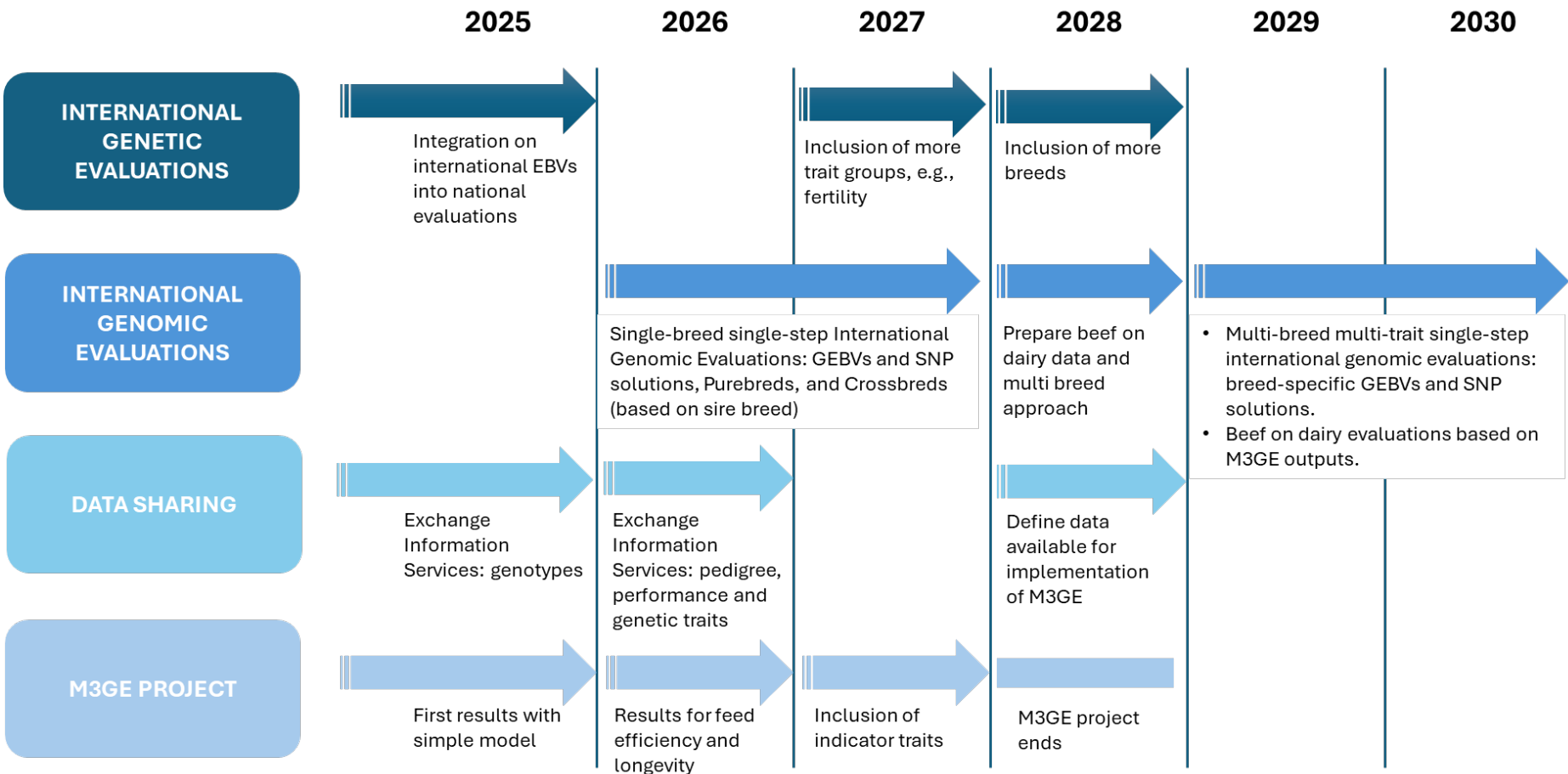
Strategic Roadmap Timeline:

- **Short-Term (2025-2026)** – Focus on optimising current services (incorporating EBVs into national evaluations and starting single step), launching genotype sharing and single-breed single-step genomic evaluations, and refining the governance structure.
- **Mid-Term (2027-2029)** – Expand trait evaluations, integrate additional data-sharing solutions, and improve industry engagement through networking and consultations.
- **Long-Term (2030+)** – Transition to full multi-breed, multi-trait, multi-country single-step genomic evaluations and establish Interbeef as the leading global provider of international beef evaluations.

Implementation & Review:

This roadmap will be reviewed by 30th June 2025 following extensive consultation with stakeholders to ensure alignment with industry needs. It is a dynamic strategy designed to evolve with market conditions, technological advancements, and stakeholder priorities. Through continuous improvement and engagement, Interbeef aims to provide cutting-edge evaluation services that drive efficiency, profitability, and sustainability in the beef sector.

Figure 1: Interbeef Strategic Roadmap



2. Introduction

The Interbeef service is undergoing a strategic review to assess its current value, future potential, and long-term sustainability. This review has been initiated in response to feedback from members and reflections from the ICAR Board regarding the evolving needs of the industry. While Interbeef has generated significant enthusiasm and continues to provide value, it is essential to ensure that the service aligns with real demand and remains financially viable. The objective is to develop a service that effectively meets the needs of its members and supports the advancement of international evaluation in the beef industry.

At the core of this initiative is the development of a strategic roadmap - a structured plan outlining Interbeef's vision, key milestones, and actions required to achieve its long-term objectives. This roadmap serves as a high-level visualisation of the organisation's strategic direction, detailing where it stands today, where it aims to go, and the steps needed to get there. Importantly, it is not a static document; it will evolve in response to industry changes, member needs, and emerging challenges, ensuring that Interbeef remains agile and responsive.

The roadmap will be subject to a formal review by **30th June 2025**, following a period of extensive engagement and consultation with existing and potential service users. This process will help gauge interest, assess commitment to future participation, and ensure that the service is positioned to deliver maximum value to its stakeholders. Through this strategic review and roadmap, Interbeef aims to reinforce its role as a leader in international beef genetic and genomic evaluations, driving innovation and collaboration in the industry.

Interbeef's Purpose and Aims

Interbeef's Purpose:

To serve as a global forum fostering collaboration, innovation, and independent services that enhance beef genetic improvement.

Aims:

The aims of Interbeef are united with those of ICAR, which are to promote the development and improvement of animal identification, performance recording, and evaluation in farm animal production.

Interbeef's purpose also clearly aligns with that of Interbull: To enhance livestock genetic improvement through international data exchange and best methods development.

SWOT Analysis

STRENGTHS	WEAKNESSES
<ul style="list-style-type: none"> • Interbull Centre on behalf of Interbeef WG is a global consolidator and central hub of data. • Existing platform, infrastructure and protocols for data exchange, e.g., phenotypes, genotypes, pedigrees, etc. • High-quality service for international evaluations. • Excellent technical and scientific skills. • Quality guidelines and standards. • Coordination of international research activities and funding. • Sharing of knowledge and research outputs. • Operates under the ICAR 'umbrella'. 	<ul style="list-style-type: none"> • Absence of Interbeef Chairs for extended period of time / Inadequate leadership and absence of coherent vision and goals. • Limited range of traits and beef breeds involved - not addressing current breeding objectives. • Lack of recent changes to business model to better meet Service User needs. • Fee model inequitable for large participants. • Cost model has zero margin (and therefore limited or no opportunity for reinvestment).

	<ul style="list-style-type: none"> • Structure of Interbeef Working Group. • Lack of commonality or collaboration with international dairy initiatives.
--	---

OPPORTUNITIES	THREATS
<ul style="list-style-type: none"> • Integration of Interbeef GEBVs and SNP effect results into national evaluations. • Implementation of single-breed single-trait multi-country single-step genomic evaluations (short term). • Implementation of multi-breed multi-trait multi-country single-step genomic evaluations (long term). • Improved networking and information sharing. • Growth and importance of beef-on-dairy. • Revised fee model. • Improved leadership and engagement with a broader range of stakeholders. • Clarify the purpose and function of the Interbeef-WG and Technical Committee. • Improved interaction and collaboration between Interbeef Working Group and other ICAR working groups. 	<ul style="list-style-type: none"> • Publication rules limiting use of Interbeef results in national evaluations. • Service Users and national data providers not perceiving value from current services (due to contractual limitations in the use of valuable service output). • Insufficient use of Interbeef outputs by Service Users. • Low interest of participants in Interbeef. • Unbalanced participation with some partners providing much greater inputs, e.g., data, resources for research. • Increasing protectionism of data limiting sharing and collaboration. • Loss of Service Users. • Trans-national breed evaluations or private / commercial evaluations, indexes, and breeding values. • Impact of Interbeef outputs on commercial income of some national organisations, e.g., genomic services

Current Interbeef Services

Genetic evaluations play a crucial role in Interbeef’s activities and represent one of the most valuable services for National Genetic Evaluation Centres (NGECs). Interbull Centre is responsible for conducting genetic evaluations three times yearly, consisting of one test run and two routine runs.

Current breed groups are:

- Aberdeen-Angus
- Charolais
- Hereford
- Limousin
- Simmental

Current trait groups are:

Adjusted Weaning Weight (adww)	Calving Traits (calv)	Carcass Traits (carc)
Animal Weaning Weight (aww)	Birth Weight (bwt) Calving Ease (cae) – direct and maternal effects	Carcass Conformation (cco) Carcass Fat (cfa) Carcass Weight (cwe)

The current Interbeef genetic evaluations have been developed using the **Animal Model Accounting for Across-Country Interactions (AMACI)** methodology, as described by Phocas et al. (2005)¹.

This approach relies on pedigree information and raw performance data as phenotypes. It has been preferred over the Multi-Trait Across-Country Evaluation (MACE) method commonly used in Interbull dairy evaluations due to the lower genetic connectedness across countries in the beef sector than in the dairy sector. Furthermore, the AMACI model presented advantages from the point of view of the estimation of variance components, the inclusion of maternal effects and showed to be more consistent in the ranking of Estimated Breeding Values (EBVs) at the international and national level.

In 2022, Renzo Bonifazi successfully defended his PhD thesis, "International Genetic and Genomic Evaluations of Beef Cattle"², funded by ICAR, Interbeef WG, Interbull, and ICBF (Bonifazi, 2022). His research's primary outcome was exploring methodologies for conducting international single-step genomic evaluations and the integration of the international genomic EBVs.

Based on this work, the teams at Interbull Centre and Wageningen University and Research (WUR) have developed plans to implement a Single-breed Single-Trait, Multi-Country Single-step Genomic Evaluation service for the Interbeef Working Group. Some of the work in the pipeline for managing genomic information has already been carried out. With favourable outcomes of research and pilot runs in 2025 and early 2026, and in collaboration with service users – the International Single-breed Single-step Genomic Beef Evaluation service could be launched in the second half of 2026 for all traits currently included in the Interbeef Evaluation service.

Additionally, in collaboration with the WUR team, Interbull Centre has developed plans for the implementation of Multi-Breed Multi-Trait Multi-Country Single-Step Genomic Evaluations (see Section 4).

In parallel with the development of the international genomic evaluations, the Interbull Centre can offer Interbeef members services for sharing different types of information, such as genotypes, pedigrees, performances, and genetic traits (e.g. genetic defects).

The exchange of genotypes (Genomic Data Exchange (GDE)) can be done through the International Genotype Exchange (GenoEx) platform. To date, this service has been used for Interbull's Genomic Evaluation Services "InterGenomics" for Holstein and Brown Swiss cattle. However, during 2025 the GenoEx-GDE service is planned to be launched, independent from international evaluations.

In 2022, the Interbeef Working Group for Information Exchange presented the final report with the standards for exchanging deeper pedigrees and phenotypes within the framework of Interbeef evaluations. These services could be made available to participants during 2026.






The Interbeef Working Group for Information Exchange did not address the possibility of exchanging genetic traits. However, "Genetic Traits Exchange" is a service that has been made available to dairy organisations through the Interbull Data Exchange Area ("IDEA"), and can be expanded to beef during 2026, building on activities that are undertaken by ICAR's Breeds Associations WG.

¹ Phocas, F., Donoghue, K. & Graser, H.U. **Investigation of three strategies for an international genetic evaluation of beef cattle weaning weight**. *Genet Sel Evol* 37, 361 (2005). <https://doi.org/10.1186/1297-9686-37-5-361>

² Bonifazi, R. (2022). **International genetic and genomic evaluations of beef cattle**. PhD thesis, Wageningen University. Wageningen University. <https://doi.org/10.18174/572085>

3. Strategic Goals & Objectives

Strategic objectives are the high-level goals that Interbeef aims to achieve. They serve as the fixed point of direction for the roadmap.

				
ENHANCING EXISTING SERVICES	EXPANDING NEW SERVICES	DATA SHARING	NETWORKING	GOVERNANCE
<p>Enable the integration of international estimated breeding values (EBVs) into national evaluations.</p>	<p>Stepwise transition to single-step, multi-breed and multi-trait international genomic evaluations to enhance accuracy and relevance. Broaden the range of traits evaluated to better reflect users' needs, including fertility, beef-on-dairy, and other traits.</p>	<p>Improve data-sharing frameworks to simplify access and ensure the utility of Interbeef results in national programs.</p>	<p>Strengthen networking opportunities, facilitating better knowledge exchange among member organisations.</p>	<p>Develop a more robust governance model with active user engagement, dedicated leadership, and transparent decision-making processes.</p>

Short-Term (2025-2026):

ENHANCING EXISTING SERVICES

- Continue to provide Interbeef international genetic evaluations for current traits and breeds of beef cattle for existing and new service users.
- Enable the integration of international estimated breeding values (EBVs) into national evaluations.
- Validate and establish a new service fee model.

EXPANDING NEW SERVICES

- Provide single-breed, single-trait, single-step International Genomic Evaluations, delivering GEBVs and SNP solutions for Purebreds and Crossbreds (based on sire breed).
- Convene a Beef-on-Dairy Working Group.
- First results with a simplified model available from the M3GE (multi-breed multi-trait multi-country genomic evaluations) project.
- Results for health traits (longevity) and novel traits (feed efficiency) available from M3GE project.

DATA SHARING

- Enable exchange of genotypes for beef through the GenoEx-GDE platform, independent from international evaluations.
- Enable exchange of pedigree, performance and genetic traits for beef through IDEA database.

NETWORKING

- Continue but revamp Annual Meetings which shall take place each year.
- Quarterly email updates provided to all stakeholders on roadmap progress.

GOVERNANCE

- Clarify the purpose, function, and operational roles of the Interbeef-WG, Technical Committee, and a Services Taskforce in relation to Interbull Centre, and review and update the Terms of Reference as required.
- Review the size, membership, and skills matrix of the Interbeef-WG to achieve its purpose.
- Review and update “Section 03: Beef Cattle Recording” of the ICAR Guidelines.
- Build effective connections with Interbull Steering Committee and relevant ICAR Working Groups:
 - Breed Associations
 - Feed and Gas
 - Functional Traits

- Review the Strategic Roadmap with previous, existing, and potential service users³ to gauge interest and commitment to future participation, by 30 June 2025.

Mid-Term (2027-2029):

ENHANCING EXISTING SERVICES

- Continue to provide Interbeef international genetic evaluations for current traits and breeds of beef cattle for existing and new service users.
- Inclusion of more trait groups, such as fertility traits, into Interbeef international genomic evaluations.
- Review service fee model and adjust if required.

EXPANDING NEW SERVICES

- Inclusion of indicator traits outputs from the M3GE project.
- Engage and consult with a broader range of stakeholders such as genetics companies and genomic service providers to gauge interest and commitment to future participation.

DATA SHARING

- Continue to enable exchange of genotypes, pedigree, performance and genetic traits for beef through IDEA and GenoEx-GDE platforms, independent from international evaluations.

NETWORKING

- Continue but revamp Annual Meetings which shall take place each year.

GOVERNANCE

- Commence strategic planning for subsequent Strategic Roadmap/Plan.
- Review and update “Section 03: Beef Cattle Recording” of the ICAR Guidelines.

Long-Term (2030+):

ENHANCING EXISTING SERVICES

- Transition Interbeef international genetic evaluations to multi-breed multi-trait multi-country single-step international genomic evaluations.

³ See Appendix 1

EXPANDING NEW SERVICES

- Provide multi-breed multi-trait multi-country single-step international genomic evaluations, for GEBVs and SNP solutions (may be possible to launch before 2030).
- Provide beef on dairy evaluations (based on the outputs of the M3GE evaluations).

4. Supporting Research and Development

A key enabling project for development of future Interbeef services is the M3GE project: multi-breed multi-trait multi-country genomic evaluations. The project is led by WUR with a consortium comprising Agriculture and Horticulture Development Board (AHDB), International Committee for Animal Recording (ICAR), Irish Cattle Breeding Federation (ICBF), Interbull, Interbeef, Federazione Nazionale delle Associazioni di Razza e Specie (FedANA), and Scotland’s Rural College (SRUC).

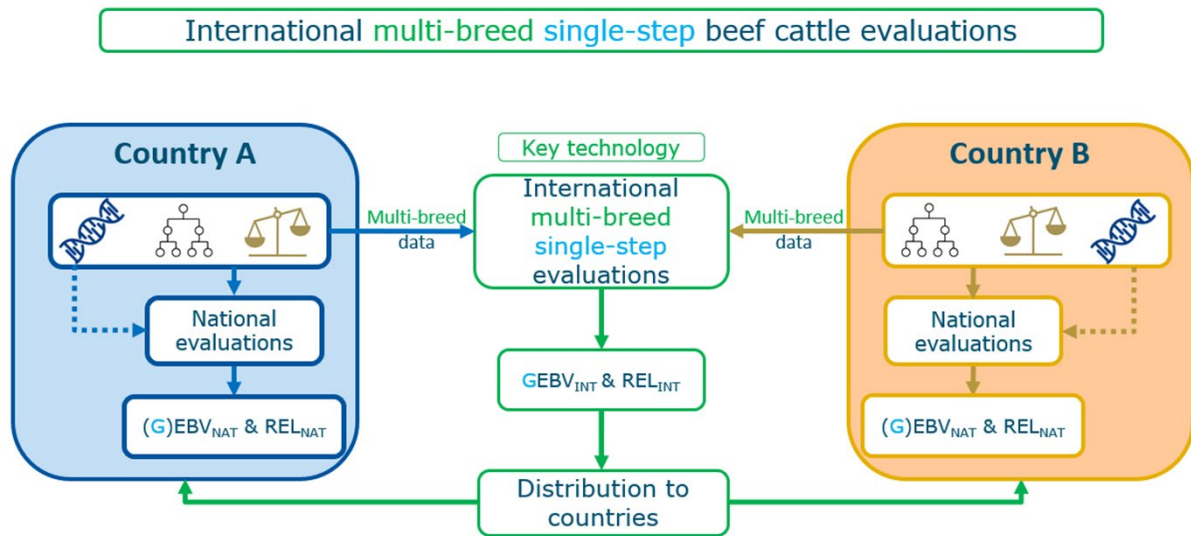
The scope of the project is to develop key-technology for a multi-breed multi-trait (single-step) genomic beef cattle international evaluation to unlock several advantages:

- Improve accuracy of GEBVs by including data on (other) purebred and crossbred animals.
- Leverage international collaboration for data collected on novel traits (e.g., feed efficiency) and health traits (e.g., longevity, other traits analysed as indicator traits, e.g., growth, calving, carcass).
- Deliver GEBVs to breeders for traits otherwise not evaluated at a national level.
- Involve new (numerically small and local) breeds and better usage of genetic resources, e.g., transboundary breeds.

Key activities and outputs of the M3GE project include:

WP1	Data and relevant information on novel traits and indicator traits for various breed compositions will be collected within the consortium
WP2	A stepwise approach will be taken to develop, validate, and test models with increasing complexity and inclusion of data to finally develop the aimed multi-trait multi-breed single-step international model
WP3	The models developed in WP2, and the associated output obtained from data of WP1, are tested and evaluated. Results of WP3 will be considered back in WP2 for further model development
WP4	Results and knowledge will be communicated and disseminated, first to the involved partners and relevant stakeholders connected directly to the field during existing meetings organised by the involved international organisations, and second to the scientific community through oral presentations and peer-reviewed scientific publications

Figure 2: Schematic of M3GE deliverables:



5. Initiatives & Action Plan

Actions are specific tasks that represent the "how" of achieving the strategic priorities.

Strategic Priority	Action	Completion Date	Responsibility	Priority
ENHANCING SERVICES	Continue to provide Interbeef international genetic evaluations for current traits and breeds of beef cattle for existing and new service users.	Ongoing	Interbull Centre	MUST DO
	Convene Interbeef Services Taskforce	April 2025	ICAR / Interbeef-WG / Interbull Centre	MUST DO
	Negotiate with existing and new service users to get their buy in and support for updating the Interbeef Collaboration Agreement.	May 2025	ICAR / Interbeef-WG	MUST DO
	Review and update the Interbeef Collaboration Agreement to allow integration of Interbeef results into national evaluations and any other changes required to align with future strategic goals and objectives.	June 2025	ICAR / Interbull Centre (to be confirmed)	MUST DO
	Review the Strategic Roadmap with previous, existing, and potential service users to gauge interest and commitment to future participation.	June 2025	ICAR / Interbeef-WG	MUST DO
	Communicate changes (integration of international EBVs into national evaluations) to existing and potential service users.	June 2025	Interbeef-WG	MUST DO
	Validate and establish a new service fee model.	October 2025	Interbeef Services Taskforce / Interbeef-WG	MUST DO
	Inclusion of more trait groups, such as fertility traits, into Interbeef international genomic evaluations.	December 2027	Interbeef-WG / Technical Committee / Interbull Centre	SHOULD DO

	Review service fee model and adjust if required.	June 2027	Interbeef Services Taskforce / Interbeef-WG	SHOULD DO
EXPANDING SERVICES	Convene a Beef-on-Dairy Working Group.	June 2025	ICAR	SHOULD DO
	First results with a simple model available from M3GE (for project participants).	September 2025	M3GE project team	MUST DO
	Provide single-breed single-step International Genomic Evaluations for: <ul style="list-style-type: none"> • GEBVs and SNP solutions • Purebreds • Crossbreds (based on sire breed) 	December 2026	Interbull Centre	MUST DO
	Results for health traits (longevity) and novel traits (feed efficiency) available from M3GE (for project participants).	December 2026	M3GE project team	MUST DO
	Engage and consult with a broader range of stakeholders such as genetics companies and genomic service providers to gauge interest and commitment to future participation.	December 2026	Interbeef-WG	SHOULD DO
DATA SHARING	Enable exchange of genotypes for beef through the GenoEx-GDE platform independent from international evaluations.	December 2025	Interbull Centre	SHOULD DO
	Enable exchange of pedigree, performance and genetic traits for beef through Interbull Data Exchange Area ("IDEA").	December 2026	Interbull Centre	SHOULD DO
NETWORKING	Interbeef Annual Meeting held	June 2025	Interbull Centre	SHOULD DO
	Quarterly Interbeef executive summary or executive update to all Interbeef stakeholders	Ongoing	Interbull Centre	SHOULD DO
GOVERNANCE	Clarify the purpose and function of the Interbeef-WG, Technical Committee, and a Services Taskforce.	December 2025	ICAR	SHOULD DO
	Review the size, membership, and skills matrix of the Interbeef-WG to achieve its purpose.	December 2025	ICAR	SHOULD DO

	Review and update the respective Terms of Reference as required.	December 2025	ICAR	SHOULD DO
	Review and update Section 03: Beef Cattle Recording of the ICAR Guidelines.	December 2025 / 2028	Interbeef-WG	SHOULD DO
	Build effective connections with Interbull Steering Committee and relevant ICAR Working Groups: <ul style="list-style-type: none"> o Breed Associations o Feed and Gas o Functional Traits 	February 2026	Interbeef-WG	SHOULD DO
	Commence strategic planning for subsequent Strategic Roadmap/Plan.	January 2028	ICAR / Interbeef-WG	SHOULD DO

6. Risks & Mitigation Strategies

The following risks and potential mitigations have been identified regarding delivery of the Interbeef Strategic Roadmap:

Risks	Mitigations
<p>Funding:</p> <ul style="list-style-type: none"> • Industry stakeholders are unwilling to fund or pay for services. • Services are undervalued or not competitively priced. • Providing cost-effective services for smaller breeds and large data contributors. • Ensuring the business model is adaptable and suitable. 	<ul style="list-style-type: none"> • Work closely with stakeholders to understand their needs and align services with their priorities. • Offer tiered pricing based on usage, country size, or data contribution levels. • Develop modular service offerings to tailor costs and features to different customer segments. • Seek co-funding from government, industry associations, or grants. • Provide clear data on the economic benefits and value-added impact of the services.
<p>Strategic:</p> <ul style="list-style-type: none"> • Competition from commercial and genomic evaluation providers. • Limited data access and reluctance to share. • Issues with data ownership, control, and governance. 	<ul style="list-style-type: none"> • Highlight unique strengths such as independent evaluations, international collaboration and “pooling” (rather than sharing) genomic information. • Offer additional tools, insights, or decision-support systems that competitors do not provide. • Offer discounted or other services to organisations that contribute data. • Provide stakeholders with clear guidelines on how data will be used, stored, and protected. • Collaborate with industry stakeholders, research institutions, or commercial providers to strengthen offerings.
<p>Operational:</p> <ul style="list-style-type: none"> • Interbeef is slow to innovate and respond to market demands. • Implementation speed and service levels fall short of service user expectations. • Poor engagement and communication with new and potential users. • Low adoption of multi-breed, multi-trait, multi-country genomic evaluations. 	<ul style="list-style-type: none"> • Implement a more flexible and iterative approach to innovation and service updates. • Achieve a margin to allocate for reinvestment and technological advancements. • Establish structured stakeholder consultations to prioritise innovations based on industry needs. • Key performance indicators (KPIs) for service delivery and responsiveness as part of ISO 9001 certification. • Offer clear documentation, webinars, and support to help new users integrate services. • Collaborate with breed organisations and other bodies to promote adoption.

7. Stakeholder Roles & Communication Plan

This section outlines the key roles and responsibilities of stakeholders in executing the strategic roadmap.

Stakeholder	Roles
ICAR Board	Strategic oversight and governance Review and renew Interbeef governance
Interbeef Working Group	Operational oversight and accountability Stakeholder communication Maintain interaction with: <ul style="list-style-type: none"> • Interbull Steering Committee • DNA Working Group • Breed Associations Working Group • Feed and Gas Working Group • Functional Traits Working Group
Interbeef Scientific Advisory Committee	Technical oversight
Interbeef Services Taskforce	Validate and establish a new Interbeef service fee model
Interbull Centre Team	Deliver existing international genetic evaluations for current traits and breeds Genomic evaluation service development and innovation Infrastructure and data management Organise and conduct Annual Meetings and other knowledge sharing activities
M3GE Research Team	Deliver complete and on-time project outputs to enable multi-breed multi-trait multi-country genomic evaluations
Industry Partners	Collaboration and knowledge and data sharing Adoption and application of genomic evaluation services and tools Funding of Interbeef services

Communication

Quarterly executive summaries should be provided to all stakeholders on roadmap progress. The Annual Meetings should provide a forum for updates on the roadmap and industry-wide discussions on completed and proposed activities.

Review & Adaptation Process

If there is sufficient ongoing support for implementing the roadmap, it will be reviewed annually, with adjustments made based on technological advancements, industry trends, and feedback from stakeholders. Regular check-ins with industry partners and service users will ensure that objectives remain aligned with real-world needs.

Appendix 1: Previous, existing and potential service users

Country	Total cattle numbers 2022 ⁴	Organisation (Relevant ICAR member)
Pakistan	53,436,000	Cattle And Buffalo Register of Pakistan (CABROP)
Mexico	36,339,884	Sistema Nacional de Identificación Individual de Ganado (SINIIGA)
Australia	24,398,826	Agricultural Business Research Institute (ABRI)
France	16,986,190	Institut de l'Élevage
South Africa	12,196,802	SA Stud Book and Animal Improvement Association Centre for Animal Breeding and Genetics, ARC Animal Improvement Institute
Uruguay	11,572,000	Sistema Nacional Información Ganadera (SNIG)
Germany	10,996,960	Bundesverband Rind und Schwein (BRS)
New Zealand	9,751,189	Beef + Lamb New Zealand
United Kingdom	9,631,892	Agriculture and Horticulture Development Board (AHDB)
Ireland	6,551,830	Irish Cattle Breeding Federation (ICBF)
Poland	6,448,290	Krajowe Centrum Hodowli Zwierząt (KCHZ)
Spain	6,455,130	Federación Española de Asociaciones de Ganado Selecto (FEAGAS)
Italy	6,049,000	Associazione Nazionale degli Allevatori delle razze bovine Charolaise e Limousine Italiane (ANACLI)
South Korea	4,116,407	Korea Animal Improvement Association (KAIA)
Japan	3,985,000	Livestock Improvement Association of Japan (LIAJ)

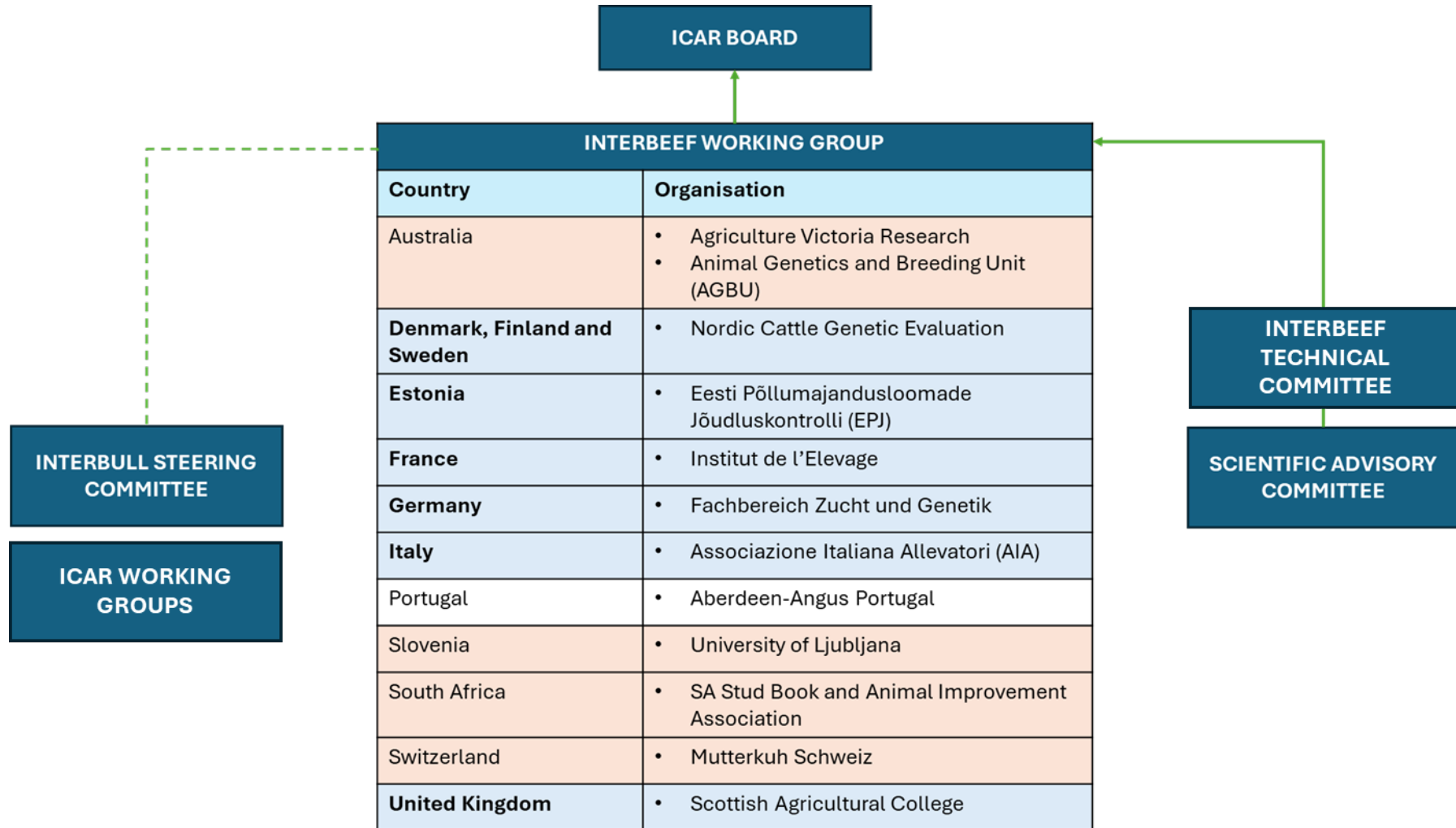
⁴ FAOSTAT <https://www.fao.org/faostat/en/#data/QCL>

The Netherlands	3,751,000	Coöperative CRV
Ukraine	2,644,000	State Agency for Animal Identification and Registration
Belgium	2,286,110	Service Public de Wallonie (SPW) CRV Vlaanderen
Austria	1,861,070	Rinderzucht Austria
Romania	1,833,700	Asociatia Aberdeen Angus Romani Asociatia Crescatorilor de Vaci Baltata Romaneasca tip Simmental
Portugal	1,579,140	Direção-General da Alimentação e Veterinária (DGAV)
Switzerland	1,525,270	Arbeitsgemeinschaft Schweizerischer Rinderzüchter (ASR)
Denmark	1,466,000	Nordic Cattle Genetic Evaluation (NAV)
Sweden	1,390,550	Nordic Cattle Genetic Evaluation (NAV)
Czechia	1,390,490	Českomoravská společnost chovatelů (CMSCH)
Norway	898,800	TYR
Hungary	894,000	Nemzeti Élelmiszerlánc-biztonsági Hivatal (NÉBIH)
Finland	821,970	Nordic Cattle Genetic Evaluation (NAV)
Serbia	799,844	Institute for Animal Husbandry
Lithuania	641,920	Chamber of Agriculture of the Republic of Lithuania
Bulgaria	579,860	Executive Agency for Selection and Reproduction in Animal Breeding
Slovenia	464,910	University of Ljubljana, Biotechnical Faculty, Dept. of Animal Science
Slovakia	433,180	Breeding Services of the Slovak Republic
Croatia	422,000	Hrvatska agencija za poljoprivredu i hranu (HAPIH)
Latvia	391,350	Rural Support Service (RSS)

Estonia	249,620	Eesti Põllumajandusloomade Jõudluskontrolli (EPJ)
Luxembourg	186,130	CONVIS – Herdbuch Service Elevage et Génétique
Iceland	79,306	Icelandic Agricultural Advisory Centre (RML)

Current Service Users	
Previous Service Users	

Appendix 2: Current Interbeef governance structure



Key elements of the Terms of Reference for the ICAR Interbeef Working Group (Interbeef-WG) are:

- The Interbeef-WG will comprise a Chair appointed by the ICAR Board and members appointed by the ICAR Chief Executive.
- Membership of the Interbeef-WG will comprise members who cover some or all, depending on the level of interest and participation in ICAR activities, of the following interests:
 - Geographical regions: Europe (West and East), North America, South & Central America, Asia, Africa & Oceania.
 - Beef Technical: Data recording & Genetic Evaluations.
 - Supporters of ICAR Participation in Beef: Interbeef WG, Former Beef WG, Interbull Sub-Committee.
- The Interbeef-WG, may from time to time, create working groups or sub-working groups to provide specialist and expert advice on topics of relevance to achieving the objectives of the WG, with approval from the ICAR Board.
- The current objectives of the Interbeef-WG are to:
 - Provide a forum for members of ICAR to collaborate, exchange information and learn from each other on all aspects of recording and genetic evaluation of beef breeds and traits of relevance to beef production.
 - Maintain, update, promote and extend universal guidelines for the recording of performance and other data relevant to beef production worldwide
 - Conduct and report the results of periodic international surveys of beef recording and genetic evaluations.
 - Develop, provide and promote a system and standards for routine international genetic evaluation of beef breeds and traits which will form the basis of the service that the Interbull Centre will provide to members of ICAR on a user-pays basis.
 - Facilitate and co-ordinate international collaboration in research and development on the utilisation of genomic information in beef cattle breeding.

Table 2: Interbeef-WG participants⁵

Name	Role	Organisation	Country	Region
Martin Burke	Interim Chair	ICAR	NLD	Europe (West)
Anahit Nazari	Genetic Data Analyst	Interbull Centre	SWE	Europe (West)
Anne Menrath	Consultant Beef Cattle	Fachbereich Zucht und Genetik	DEU	Europe (West)
Elisenda Rius-Vilarrasa	Geneticist	Växa Sverige	SWE	Europe (West)
Fernando Macedo	Quantitative Geneticist	Interbull Centre	SWE	Europe (West)
Gabriel Soares Campos	Genetic Data Analyst	Interbull Centre	SWE	Europe (West)
Getinet Tarekegn	Geneticist	Scottish Agricultural College (SRUC)	GBR	Europe (West)
Harriet Bunting	Lead Animal Genetics Expert	Agriculture and Horticulture Development Board (AHDB)	GBR	Europe (West)
Hooman Moghadam	Principal Geneticist	TYR	NOR	Europe (West)
Iola Croue	R&D Coordinator	GENEVAL	FRA	Europe (West)

⁵ From Interbeef-WG minutes Friday, 22 November 2024

Japie Van der Westhuizen	Former General Manager	SA Stud Book and Animal Improvement Association	ZAF	Africa
Jeremie Vandenplas	Researcher	Wageningen University & Research (WUR)	NLD	Europe (West)
Jo E Newton	Research Scientist	Agriculture Victoria Research	AUS	Oceania
Katrine Haugaard	Genetic Data Analyst	Interbull Centre	SWE	Europe (West)
Kim Matthews	Head of Animal Breeding & Product Quality	Agriculture and Horticulture Development Board (AHDB)	GBR	Europe (West)
Laurent Griffon	Director	Institut de l'Élevage	FRA	Europe (West)
Luana Speiser	Herdbook	Mutterkuh Schweiz	CHE	Europe (West)
Martina Piazza	Technical Consultant	ANACLI	ITA	Europe (West)
Martino Cassandro	Technical Director, of Federation of National Livestock Herdbook Associations	FEDANA	ITA	Europe (West)
Mart Uba	Genetic evaluation	Eesti Põllumajandusloomade Jõudluskontrolli (EPJ)	EST	Europe (East)
Renzo Bonifazi		Wageningen University & Research (WUR)	NLD	Europe (West)
Riccardo Bozzi	Research Scientist	UNIFI	ITA	Europe (West)
Ross Evans		ICBF	IRL	Europe (West)
Siri Furre	Head of Research and Development	TYR	NOR	Europe (West)
Thierry Pabiou		ICBF	IRL	Europe (West)
Valentina Palucci	Service and Quality Manager	Interbull Centre	SWE	Europe (West)
Toine Roozen	Interbull Centre Director	Interbull Centre	SWE	Europe (West)
Wolfgang Ruten		vit	DEU	Europe (West)
Zdenka Vesela		VUZV	CZV	Europe (East)