



THE GLOBAL STANDARD
FOR LIVESTOCK DATA



University of *Ljubljana*
Biotechnical Faculty

Network. Guidelines. Certification.

Experiences of a new member (Slovenia)

Barbara Luštrek

ICAR WEBINAR / INTERBEEF
10 DECEMBER 2020

Content

- Slovenia – suckler herds
- Why Interbeef?
- From Pilot to Routine
- Evaluation steps
- Overall experience

Slovenian suckler herds in numbers, 2019



In total

~ 17.000 herds in pedigree recording

~ 61.000 cows

(mostly cross breed & SIM) → ~3% CHA&LIM

→ Small herds: average 3.7 cows/herd

Suckler herd performance recording

~ 30 herds

~ 650 cows (45% LIM and 30% CHA)

Routinely estimated national breeding values

→ 3 times/year

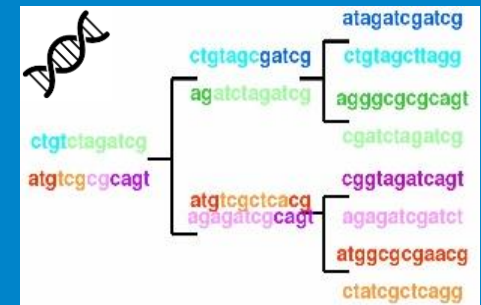
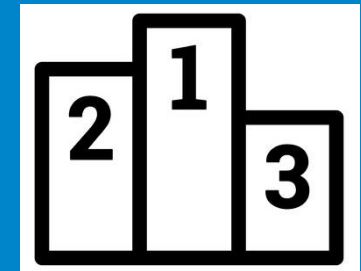
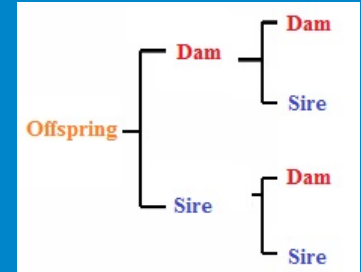
→ growth traits of calves

→ calving ease

Genotyping in progress

Why Interbeef?

- Animals in our population get international links and information
- We get comparable source of information for domestic & foreign animals
- We would like to participate in genomic evaluation



Pilot → Test → Routine Run

Breeds

Charolais

Limousin

Traits

→ Adjusted weaning weight

Pilot run 2019

→ Adjusted weaning weight + birth weight + calving ease

Test run & Routine run 2020

→ ~ 2,000 phenotypes/breed/trait



Evaluation steps

- 1** Creation of input files (pedigree, performance)
- 2** Upload on IDEA platform
- 3** Results
- 4** Use of Interbeef proofs

Overall experience

A lot of „firsts“

- Sharing phenotypic information
- Dealing with creation of xml
- Receiving huge number of EBVs
 - 94 Mio for breed*trait*EBV on Slovenian scale
 - 320 Mio for breed*trait*EBV on all scales
- Receiving foreign cow EBVs
- Ranking all (M+F) our animals at the international level



Thank you

barbara.lustrek@bf.uni-lj.si

University of Ljubljana, Biotechnical Faculty, Department of Animal Science