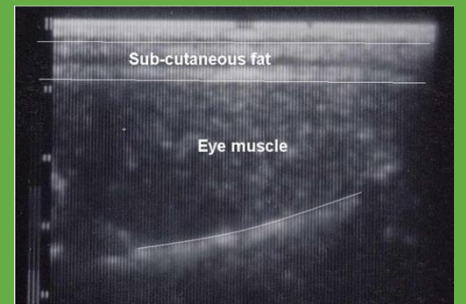


# Meat sheep (?+goats?) performance recording guidelines

Joanne Conington



# AIM OF WORKING GROUP?

---



To draw up guidelines for performance recording of meat sheep (?and goats?)

# Suggested plan of action

---



1. Agree performance trait 'groupings'
2. Assign people to tasks
3. Draw up a GANTT / workplan to deliver 1st draft of report

# Trait grouping suggested approach



## EWE

- Litter size born, reared, no. lambs lost, pregnancy scanning, lambing ease (maternal), lambing interval, age @1<sup>st</sup> lambing, mature live weight, BCS, endemic health traits (e.g. footrot, mastitis), conformation (udder, teat, legs)

## LAMB

- Live weights from birth to slaughter, lambing ease (direct), growth, fat, muscle, health\*, carcass, meat and eating quality, survival

## RAM

- Scrotal circumference, libido, fertility / sperm quality / AI properties

# Committee

---



# Starting simple – suggestion?

---



For each trait grouping:-

1. Identify which country can provide existing (documented) guideline(s) for
  - a) recording
  - b) evaluating the trait(s)
2. Lead person collate information and provide summary

# Activity Timeline ?



Activity	DATE	Who is responsible ?
Agree approach	12 / 6/ 2017	All
Develop activity timeline		
Formalise reporting structure for consistency across all traits		
Provide 1 <sup>st</sup> example for prototype reporting	30/11/2018	
Provide guidelines for at least one trait per group		
Provide guidelines for all main traits from all 3 groups		
Deliver V1 of report	2019 ?	