

# Tru-Test Data Handler

Paul Jandrin  
AgSource DHI Service Representative

© 2008 CRI



**AgSource**  
Cooperative Services  
A subsidiary of Cooperative Resources International

## Data Handler

- Durable
- Size
- Easy to use
- Adaptable
- Long Battery Life



**AgSource**  
Cooperative Services  
A subsidiary of Cooperative Resources International

© 2008 CRI

# Data Handler

- Mechanical Meters
  - Milk weights, samples and pen no.
  - Samples and pen no.
- RFID Reader
  - Bluetooth Compatible
- Electronic Milk Meters



© 2008 CRI

The screenshot shows the 'Farm Variable' configuration screen in the Data Handler software. The window title is 'DataHandler v1.1.0'. The interface has a menu bar (File, Edit, Data, Options, Help) and a toolbar with icons for file operations and data management. The main content area is divided into 'Farm Settings' and 'Farm Variables'. The 'Farm Variables' list includes the following items:

- EXFILBLOC\_M\_R\_R\_M: Const, Auto
- COMPRES: Not applicable (s)
- COMPRESM: Group: Farm code
- MATEPRES: M
- MSMST: Enable 99 99 code
- RESELECTBY99: 1 = Pen
- SRM: \*10 = force 100 10 of
- SRM1: \*100 = "Under" meter
- SRM2: \*200 = AIR LIST METER
- SRM3: \* = Enable 000 \*
- SRM4: \*1 = "Sample" meter
- SRM5: \*2 = Allow duplicates
- SRM6: \*4 = Assign sample user
- SRM7: Group (= pen) enable
- SRM8: Not applicable
- SRM9: Not applicable
- SRM10: Standard 10 codes
- SRM11: No 99 99 code \*
- SRM12: Name: Penno, 99 \*
- SRM13: Enable
- SRM14: Not applicable
- SRM15: \*1 = enable 00
- SRM16: \*1 = use decimal point
- SRM17: \*2 = standard 10
- SRM18: \*4 = 99 to 99 transfer
- SRM19: \*6 = Round 99 to 99 not
- SRM20: Not applicable
- SRM21: Code 0 must be \*
- SRM22: Not applicable
- SRM23: Enter code (light)
- SRM24: Enter code
- SRM25: J1 jump
- SRM26: J1 jump
- SRM27: J1 jump
- SRM28: J1 jump
- SRM29: Not applicable
- SRM30: Not applicable
- SRM31: Not applicable
- SRM32: Not applicable
- SRM33: Not applicable
- SRM34: Not applicable
- SRM35: Not applicable
- SRM36: Not applicable
- SRM37: Not applicable
- SRM38: Not applicable
- SRM39: Not applicable
- SRM40: Not applicable
- SRM41: Not applicable
- SRM42: Not applicable
- SRM43: Not applicable
- SRM44: Not applicable
- SRM45: Not applicable
- SRM46: Not applicable
- SRM47: Not applicable
- SRM48: Not applicable
- SRM49: Not applicable
- SRM50: Not applicable
- SRM51: Not applicable
- SRM52: Not applicable
- SRM53: Not applicable
- SRM54: Not applicable
- SRM55: Not applicable
- SRM56: Not applicable
- SRM57: Not applicable
- SRM58: Not applicable
- SRM59: Not applicable
- SRM60: Not applicable
- SRM61: Not applicable
- SRM62: Not applicable
- SRM63: Not applicable
- SRM64: Not applicable
- SRM65: Not applicable
- SRM66: Not applicable
- SRM67: Not applicable
- SRM68: Not applicable
- SRM69: Not applicable
- SRM70: Not applicable
- SRM71: Not applicable
- SRM72: Not applicable
- SRM73: Not applicable
- SRM74: Not applicable
- SRM75: Not applicable
- SRM76: Not applicable
- SRM77: Not applicable
- SRM78: Not applicable
- SRM79: Not applicable
- SRM80: Not applicable
- SRM81: Not applicable
- SRM82: Not applicable
- SRM83: Not applicable
- SRM84: Not applicable
- SRM85: Not applicable
- SRM86: Not applicable
- SRM87: Not applicable
- SRM88: Not applicable
- SRM89: Not applicable
- SRM90: Not applicable
- SRM91: Not applicable
- SRM92: Not applicable
- SRM93: Not applicable
- SRM94: Not applicable
- SRM95: Not applicable
- SRM96: Not applicable
- SRM97: Not applicable
- SRM98: Not applicable
- SRM99: Not applicable
- SRM100: Not applicable
- SRM101: Not applicable
- SRM102: Not applicable
- SRM103: Not applicable
- SRM104: Not applicable
- SRM105: Not applicable
- SRM106: Not applicable
- SRM107: Not applicable
- SRM108: Not applicable
- SRM109: Not applicable
- SRM110: Not applicable
- SRM111: Not applicable
- SRM112: Not applicable
- SRM113: Not applicable
- SRM114: Not applicable
- SRM115: Not applicable
- SRM116: Not applicable
- SRM117: Not applicable
- SRM118: Not applicable
- SRM119: Not applicable
- SRM120: Not applicable
- SRM121: Not applicable
- SRM122: Not applicable
- SRM123: Not applicable
- SRM124: Not applicable
- SRM125: Not applicable
- SRM126: Not applicable
- SRM127: Not applicable
- SRM128: Not applicable
- SRM129: Not applicable
- SRM130: Not applicable
- SRM131: Not applicable
- SRM132: Not applicable
- SRM133: Not applicable
- SRM134: Not applicable
- SRM135: Not applicable
- SRM136: Not applicable
- SRM137: Not applicable
- SRM138: Not applicable
- SRM139: Not applicable
- SRM140: Not applicable
- SRM141: Not applicable
- SRM142: Not applicable
- SRM143: Not applicable
- SRM144: Not applicable
- SRM145: Not applicable
- SRM146: Not applicable
- SRM147: Not applicable
- SRM148: Not applicable
- SRM149: Not applicable
- SRM150: Not applicable
- SRM151: Not applicable
- SRM152: Not applicable
- SRM153: Not applicable
- SRM154: Not applicable
- SRM155: Not applicable
- SRM156: Not applicable
- SRM157: Not applicable
- SRM158: Not applicable
- SRM159: Not applicable
- SRM160: Not applicable
- SRM161: Not applicable
- SRM162: Not applicable
- SRM163: Not applicable
- SRM164: Not applicable
- SRM165: Not applicable
- SRM166: Not applicable
- SRM167: Not applicable
- SRM168: Not applicable
- SRM169: Not applicable
- SRM170: Not applicable
- SRM171: Not applicable
- SRM172: Not applicable
- SRM173: Not applicable
- SRM174: Not applicable
- SRM175: Not applicable
- SRM176: Not applicable
- SRM177: Not applicable
- SRM178: Not applicable
- SRM179: Not applicable
- SRM180: Not applicable
- SRM181: Not applicable
- SRM182: Not applicable
- SRM183: Not applicable
- SRM184: Not applicable
- SRM185: Not applicable
- SRM186: Not applicable
- SRM187: Not applicable
- SRM188: Not applicable
- SRM189: Not applicable
- SRM190: Not applicable
- SRM191: Not applicable
- SRM192: Not applicable
- SRM193: Not applicable
- SRM194: Not applicable
- SRM195: Not applicable
- SRM196: Not applicable
- SRM197: Not applicable
- SRM198: Not applicable
- SRM199: Not applicable
- SRM200: Not applicable
- SRM201: Not applicable
- SRM202: Not applicable
- SRM203: Not applicable
- SRM204: Not applicable
- SRM205: Not applicable
- SRM206: Not applicable
- SRM207: Not applicable
- SRM208: Not applicable
- SRM209: Not applicable
- SRM210: Not applicable
- SRM211: Not applicable
- SRM212: Not applicable
- SRM213: Not applicable
- SRM214: Not applicable
- SRM215: Not applicable
- SRM216: Not applicable
- SRM217: Not applicable
- SRM218: Not applicable
- SRM219: Not applicable
- SRM220: Not applicable
- SRM221: Not applicable
- SRM222: Not applicable
- SRM223: Not applicable
- SRM224: Not applicable
- SRM225: Not applicable
- SRM226: Not applicable
- SRM227: Not applicable
- SRM228: Not applicable
- SRM229: Not applicable
- SRM230: Not applicable
- SRM231: Not applicable
- SRM232: Not applicable
- SRM233: Not applicable
- SRM234: Not applicable
- SRM235: Not applicable
- SRM236: Not applicable
- SRM237: Not applicable
- SRM238: Not applicable
- SRM239: Not applicable
- SRM240: Not applicable
- SRM241: Not applicable
- SRM242: Not applicable
- SRM243: Not applicable
- SRM244: Not applicable
- SRM245: Not applicable
- SRM246: Not applicable
- SRM247: Not applicable
- SRM248: Not applicable
- SRM249: Not applicable
- SRM250: Not applicable



© 2008 CRI

The screenshot displays the LinkTEAM USA 7.4g software interface. The main window shows a list of session details and meter details. The session details table includes columns for Session ID, Start Date/Time, End Date/Time, and Battery Charge. The meter details table includes columns for Meter ID, Start Date/Time, End Date/Time, and Meter Serial Number. The interface also features a menu bar, a toolbar, and a status bar at the bottom.

© 2008 CRI

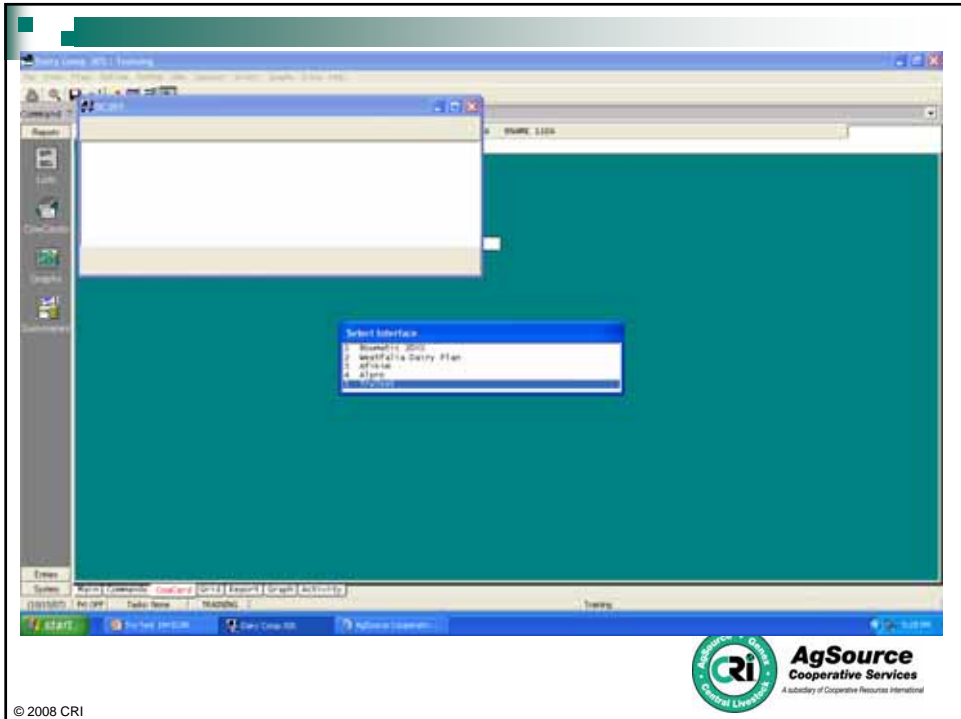
**AgSource**  
Cooperative Services  
A Subsidiary of Cooperative Resources International

## Computer setup

The photograph shows a computer setup on a wooden desk. A black keyboard and mouse are visible on the left. A yellow Data Handler device is connected to the computer via a cable. The device has a small screen and several buttons. The background is a plain wall.

© 2008 CRI

**AgSource**  
Cooperative Services  
A Subsidiary of Cooperative Resources International



© 2008 CRI

## Data Handler and EMMs



© 2008 CRI



## Data Handler and RFID



© 2008 CRI

## Data Handler and Mechanical



© 2008 CRI

## Cow Id and Pen number



© 2008 CRI

## Milk weight and Sample



© 2008 CRI

## Data Handler Charging

- Displays % Charge
- 20 hours on Full Charge
- Can Charge During Use



© 2008 CRI

## Tru-Test Data Handler

- Easy to use and change
- Adapts to many different styles
- Very Durable
- Questions?



© 2008 CRI