

ICAR Technical Workshop

10-12 June, 2015

Krakow, Poland



CONFERENCE
WEBSITE

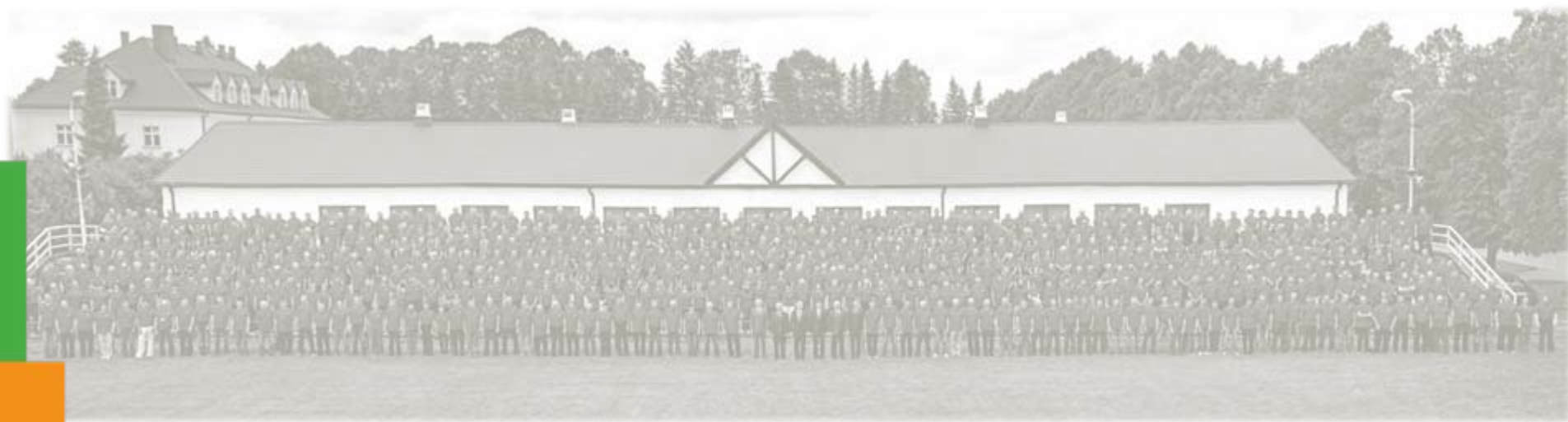
WWW.ICAR2015.PL

PERFORMANCE RECORDING IN THE GENOTYPED WORLD



POLISH FEDERATION OF CATTLE BREEDERS AND DAIRY FARMERS

General overview of activity



Polish Federation of Cattle Breeders and Dairy Farmers

CONFERENCE
WEBSITE

WWW.ICAR2015.PL



Created in 1995 by breeders



Unifies 20 regional breeders' associations



Managed by breeders



Provides its services for breeders' benefit



Herdbooks of dairy cattle (since 2004)

and realisation of the breeding program in the cooperation with AI centres



Milk recording (since 2006) MR methods A4, AT4, A8

all animal events data collection, milk samples analyses: protein, fat, urea, lact., dry solids, somatic cells, acetone, BHB. Pedigrees confirmation – DNA



Type conformation (since 2007)



Nutritional advisory (since 2008) + forage laboratory



Mating advisory — using our own software tool called „DoKo”



Development projects (since 2012)

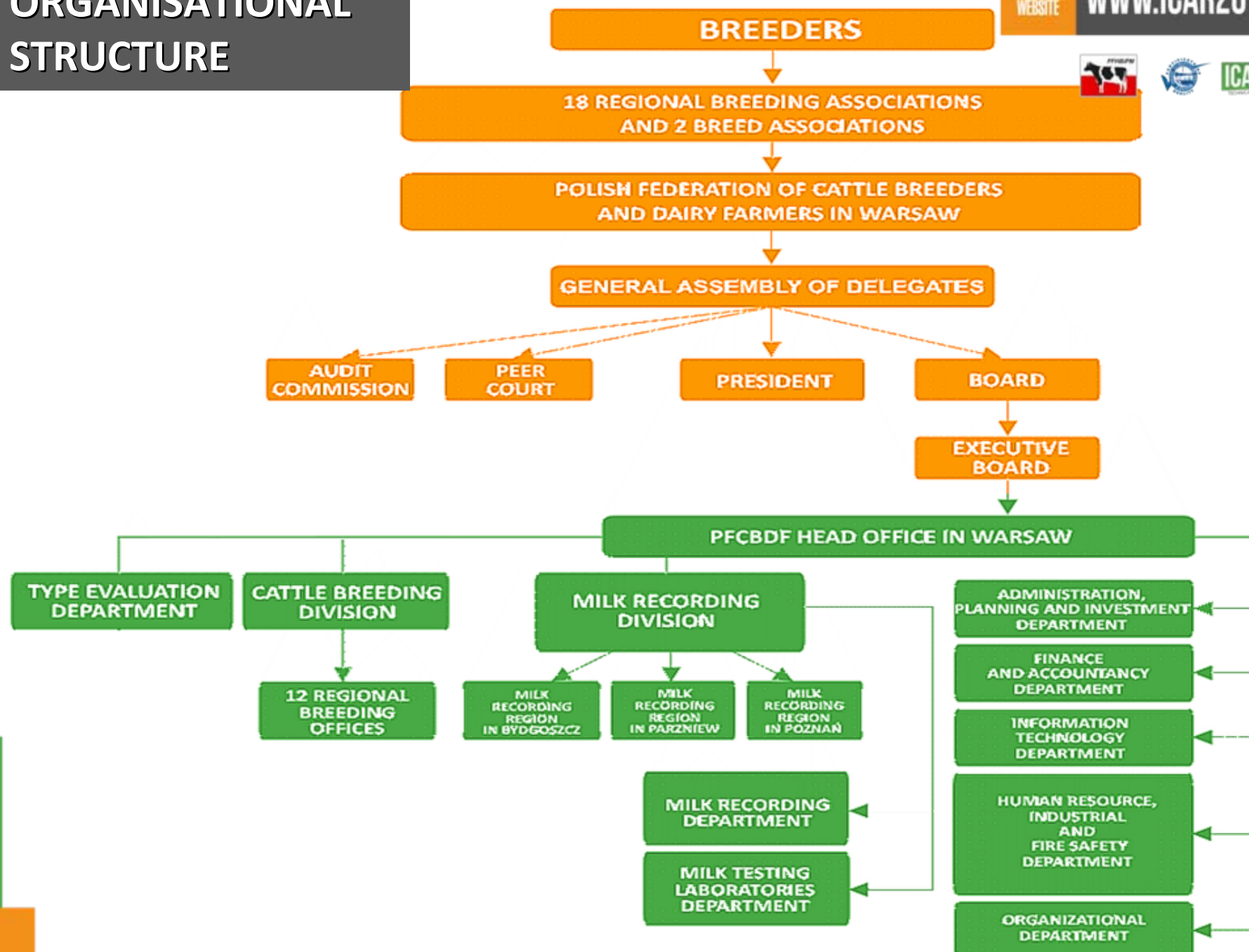


Organisation and co-organisation of dairy cattle shows in regional and national scale

ORGANISATIONAL STRUCTURE

CONFERENCE
WEBSITE

WWW.ICAR2015.PL





ICAR 2015
POLSKA



PFCBDF employs more than 1.000 people



670

field technicians (samples takers)

67

supervision inspectors

80

people responsible for data verification and its typing into DB

80

people in 4 laboratories

12

herdbooks specialists

10

type conformation classifiers

10

feeding advisors

3

metrology specialists

Polish Federation of Cattle Breeders and Dairy Farmers is a member of:

CONFERENCE
WEBSITE

WWW.ICAR2015.PL



International Committee for Animal Recording (ICAR) and its Sub-committee INTERBULL



World Holstein Friesian Federation (WHFF)



European Holstein and Red Holstein Confederation (EHRC)



European Simmental Federation



**Copa-Cogeca Working Group „MILK”
and Advisory Group „MILK AND DAIRY PRODUCTS”**

LABORATORIES

CONFERENCE
WEBSITE

WWW.ICAR2015.PL



4 Laboratories

CombiFoss™ FT+ 600 samples/hour



1 Forage laboratory InfraXact™
FOSS



1 Cattle genetics laboratory

(since 2015)

The strength of PFCBDF's feeding advisory services is:

CONFERENCE
WEBSITE

WWW.ICAR2015.PL



AN OBJECTIVE AND INDIVIDUAL APPROACH TOWARDS EACH SINGLE HERD



PFCBDF provides its clients with:

CONFERENCE
WEBSITE

WWW.ICAR2015.PL



A DIRECT ACCESS INTO DATABASE IN TERMS OF THEIR DATA

Hodowca online

Karta krów - Statystyka informacyjna
PL-0000449-1819-V LABA 2

Wyniki obory

Dobór do kojarzeń V 1.1
9999999 GOSPODARSTWO

Zmień oborę Kojarzywa Kartoteka obór Kartoteka krów Kartoteka buhajów Parametry Zamknij

PFCBDF invests in:

CONFERENCE
WEBSITE

WWW.ICAR2015.PL



PDA implementation

PSION WORKABOUT

(70% TECHNICIANS)

DEVELOPMENT OF A NEW MANAGEMENT SYSTEM

INTEGRATING ALL DATA SOURCES AT A FARM

Nr Lp	Numer krowy Nazwa	Nr głowy Nz oborowy	Kg. mleka				Chora Zas.	Rozdział porodu	Nr laktacji Data wyl.	Przyczyn Libryce Data	Ostatnie krycie Numer buhaja Data/rodzaj	Uwagi
			1 doj	2 doj	3 doj	Suma						
1	CZ-123456789	1	55	45	40	140						
2	CZ-222456548	2	0	0	0	0						
3	DE-0913245219	3	0	0	0	0	ZAS			2009-05-25		W
4	PL-00501054645-1	4	55	42	40	137						K
5	PL-00511354866-1	5	15	71	46	132				DE-0123456756	02	
6	PL-00514621548-7	6	31	42	40	113				2009-03-31		W
7	DE-0124567824	7	107	42	40	189				US-60372887	01	
8	PL-00544562112-4	8	0	0	0	0						
9	PL-00512057894-5	9	71	42	40	153						K
10	PL-00514654221-8	10	54	78	40	172				NL-345645432	02	K
11	PL-00566156544-6	11	32	28	40	100				2009-08-01		
12	PL-00511354451-2	12	42	58	40	140						
13	PL-00512456546-1	13	35	72	40	147				US-131184495	01	
14	PL-005334	14	54	88	40	182				2009-12-19		
15	PL-00532154654-7	15	54	88	40	182						
16	PL-00511265465-9	16	42	48	40	130						
17	PL-00514565468-1	17	43	42	40	125						
18	PL-00511465874-3	18	42	45	40	127						
19	PL-00524567890	19	46	43	40	129						
20	BRAZIL	20	46	43	40	129						
Suma mleka ze strony			3394									

kolumnie NUMER OBORY oznacza krowę z wynikami wziętymi, ** oznacza krowę z wynikami bieżącymi
nie UWAGI oznacza krowę, której należy oznaczyć szybkość doju i temperaturę

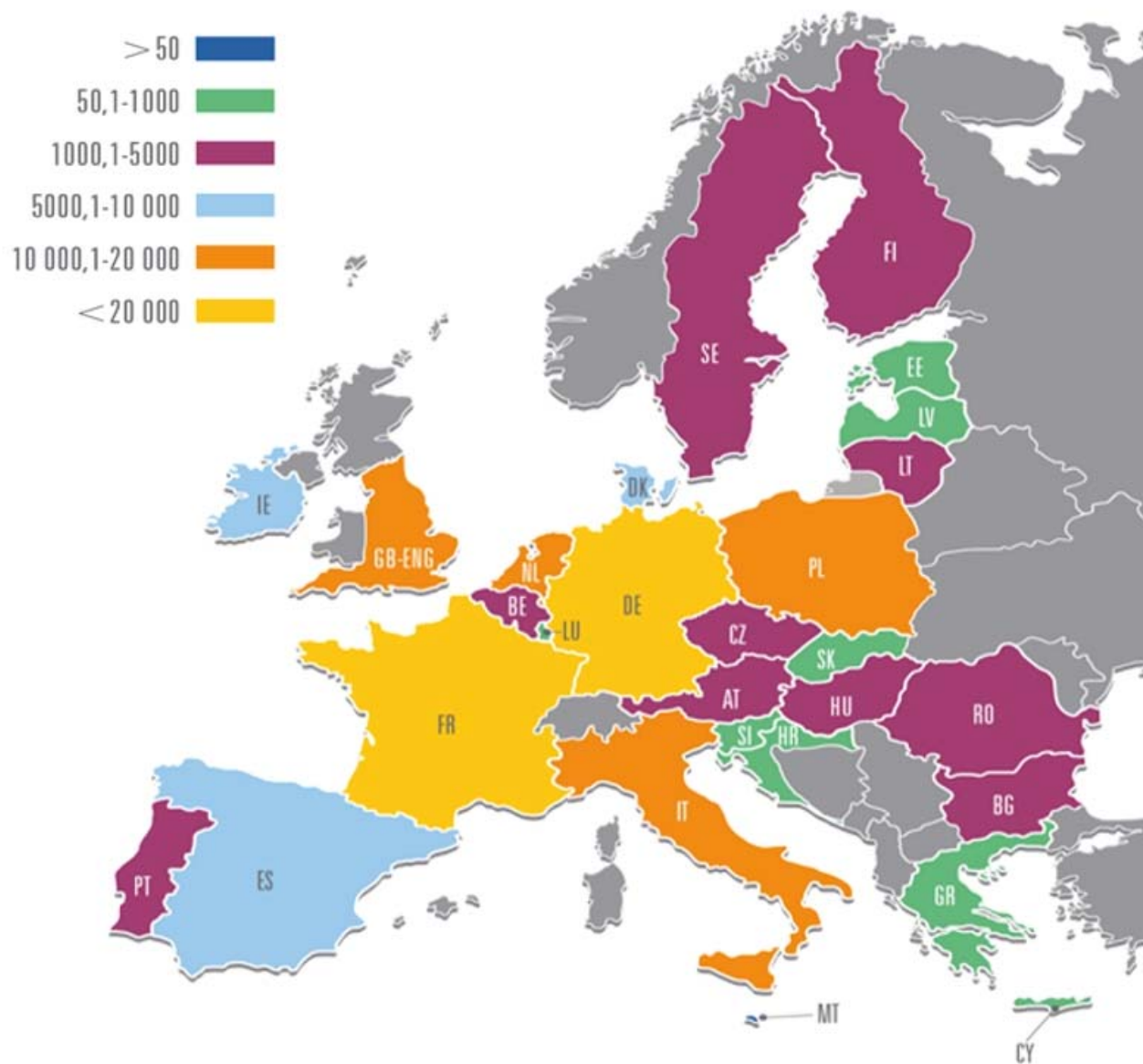
Podpis hodowcy
Hodowca Bydła Mielży

National milk production level in mln kg

Source: EUROSTAT

CONFERENCE
WEBSITE

WWW.ICAR2015.PL

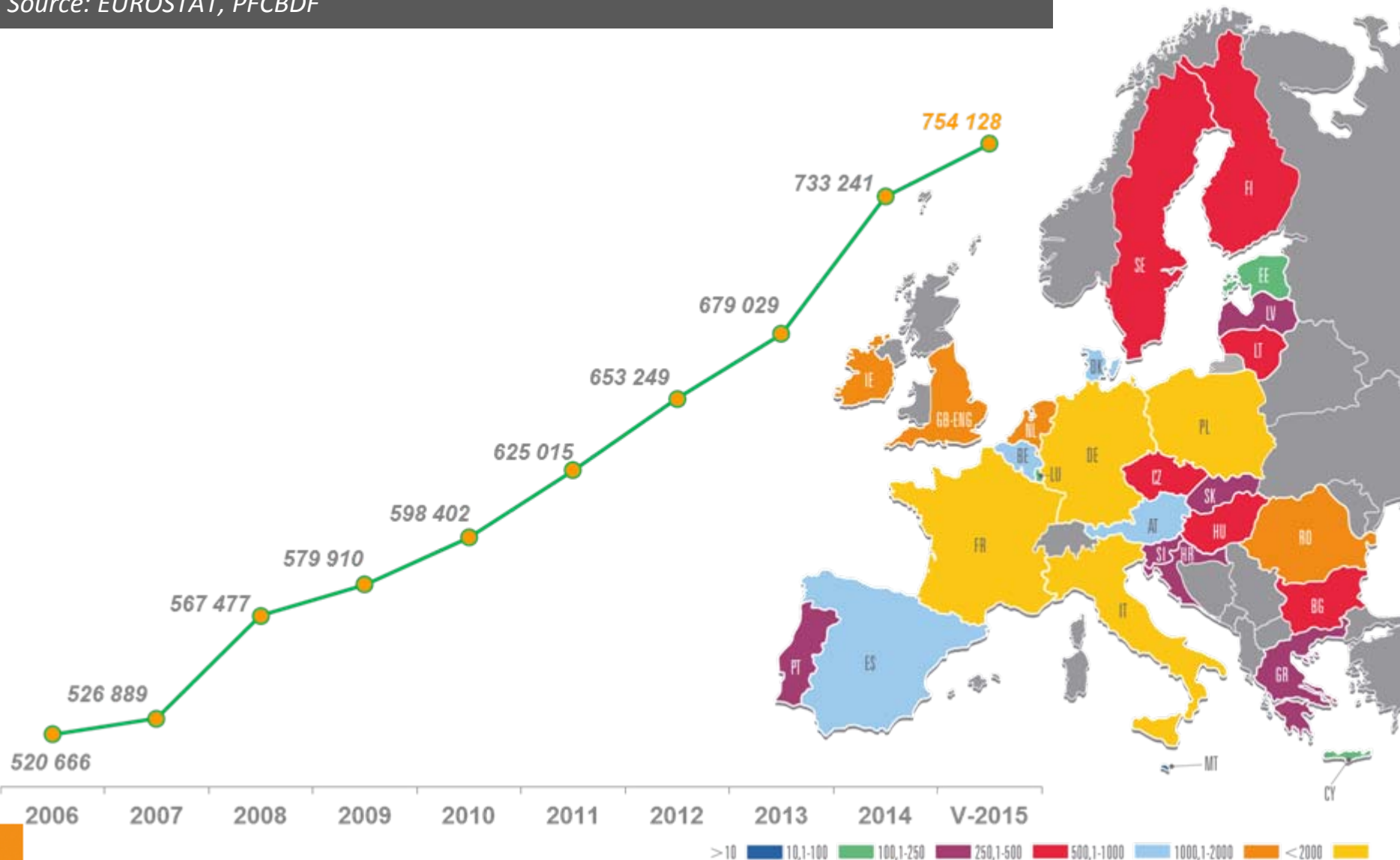


PFCBDF Evolution of recorded population

Source: EUROSTAT, PFCBDF

CONFERENCE
WEBSITE

WWW.ICAR2015.PL

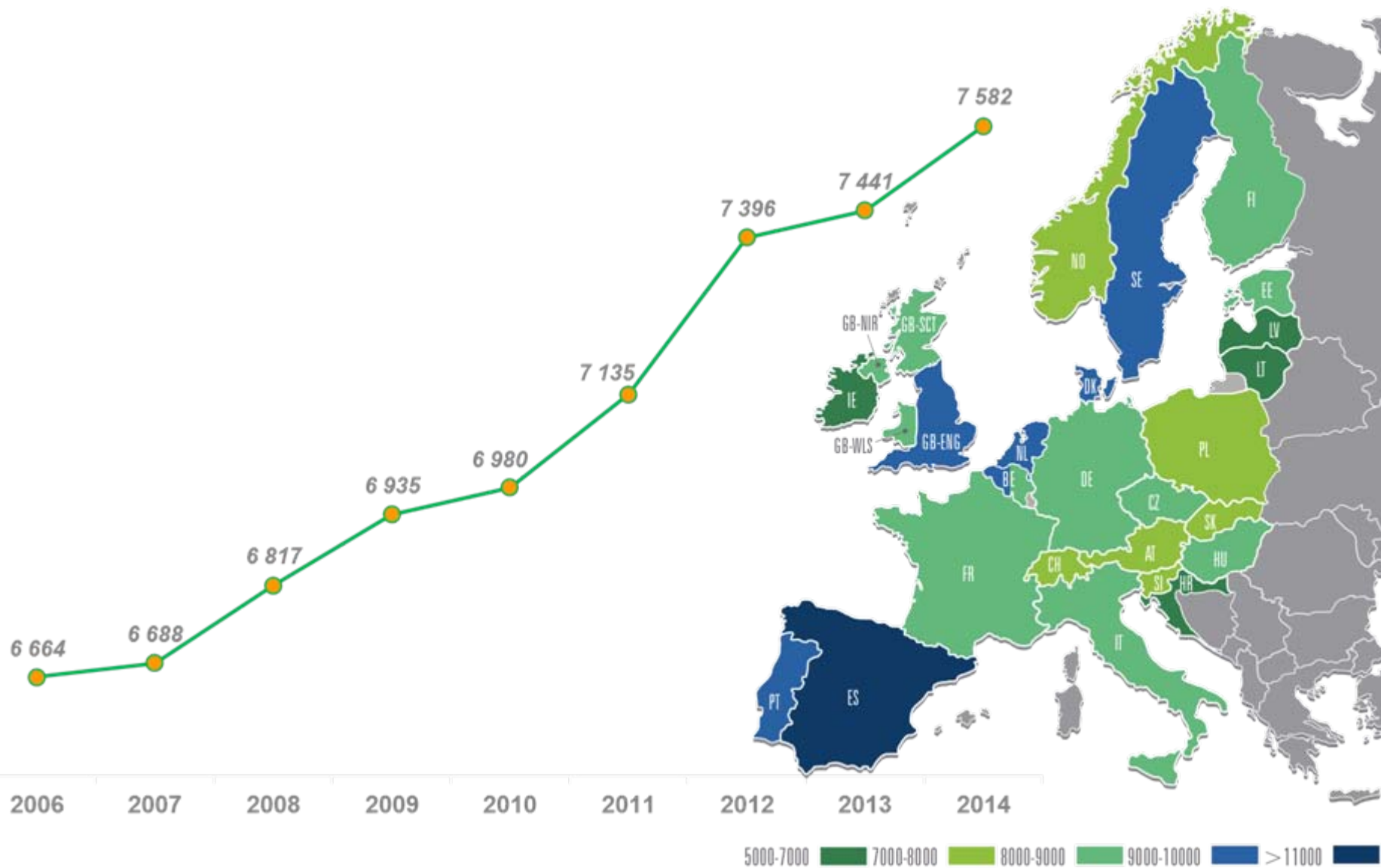


PFCBDF Average milk yield of recorded cows

Source: ICAR, PFCBDF

CONFERENCE
WEBSITE

WWW.ICAR2015.PL



PFCBDF in figures

CONFERENCE
WEBSITE

WWW.ICAR2015.PL



754 128

number of recorded cows in V-2015

20 101

number of recorded herds on 31. 12. 20014

2 247 785

total number of dairy cows

33%

percentage of cows in milk recording

678 332

cows registred in herd book

35,4

average size of recorded herd

70% AT4 26% A4 4% A8

methods

7 582

average milk yeld



LIMITED LIABILITY COMPANY OF POLISH FEDERATION OF CATTLE BREEDERS AND DAIRY FARMERS





TASK OF LTD. COMPANY

ISSUING THE CATTLE BREEDING MAGAZINE

24 000 monthly



ULTRA PLUS & ULTRA LOOK

ZUPEŁNIE NOWA JAKOŚĆ



TASK OF LTD. COMPANY

DELIVERING EAR TAGS TO OUR BREEDERS

approx. 50.000 monthly



UWAGA !

W przypadku braku nazwy kolczyka na zamówieniu,
dostarczony zostanie kolczyk ULTRA PLUS.

POLSKA FEDERACJA Sp. z o.o.
Oddział Psary Małe
Psary Małe ul. Nekielska 11G,
62-300 Września

tel./fax: 22 502 33 21 ,
e-mail: biuro@polskafederacja.pl
www.polskafederacja.pl





TASK OF LTD. COMPANY DELIVERING COW FITTING SERVICES TO BREEDERS





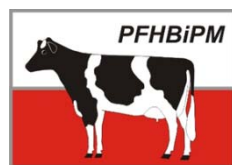
21st World Simmental-Fleckvieh Congress



POLAND, KRAKÓW – ARŁAMÓW, AUGUST 22-28, 2016

WE ARE LOOKING FORWARD TO MEETING YOU IN POLAND AGAIN!

Congress website: <http://www.wsffcongress2016.pl>





**THANK YOU
FOR YOUR ATTENTION**



CONFERENCE
WEBSITE

WWW.ICAR2015.PL