



Cattle Breeding in Germany

Bianca Lind

German Cattle Breeders' Federation

Bonn, Germany

Welcome to Berlin!



Animal husbandry is the main source of income



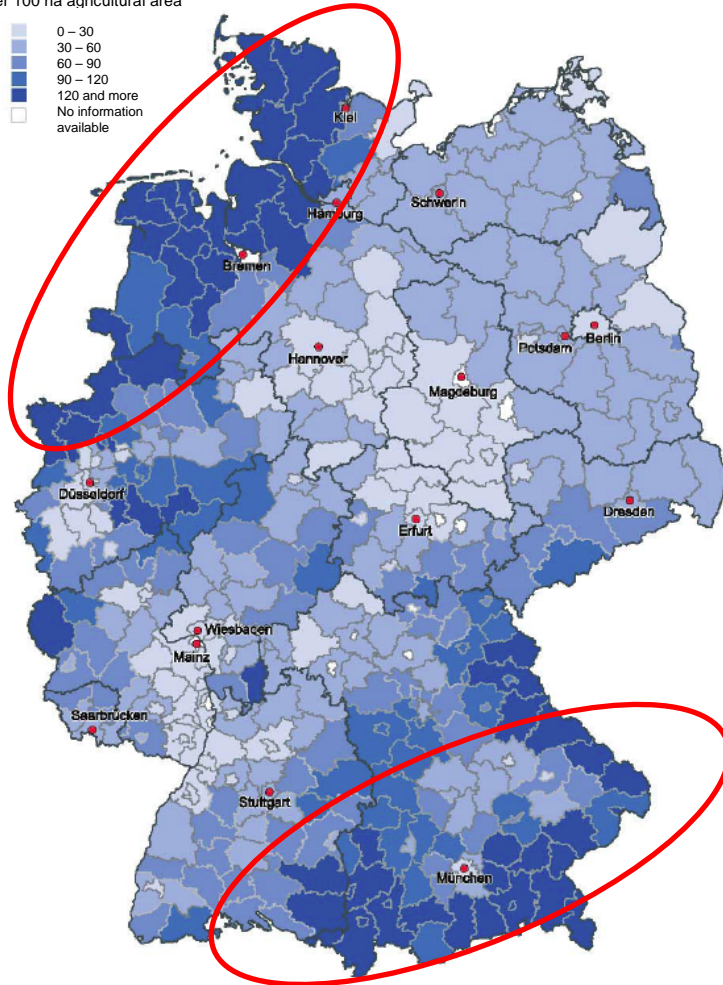
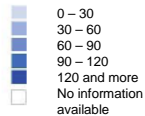
- in Germany half of the farms are specialised in livestock
- main group (> 25 %) are dairy farmer
- through the sale of products from livestock enterprises, 60 % of revenues in German agriculture are generated

Cattle stock in Germany



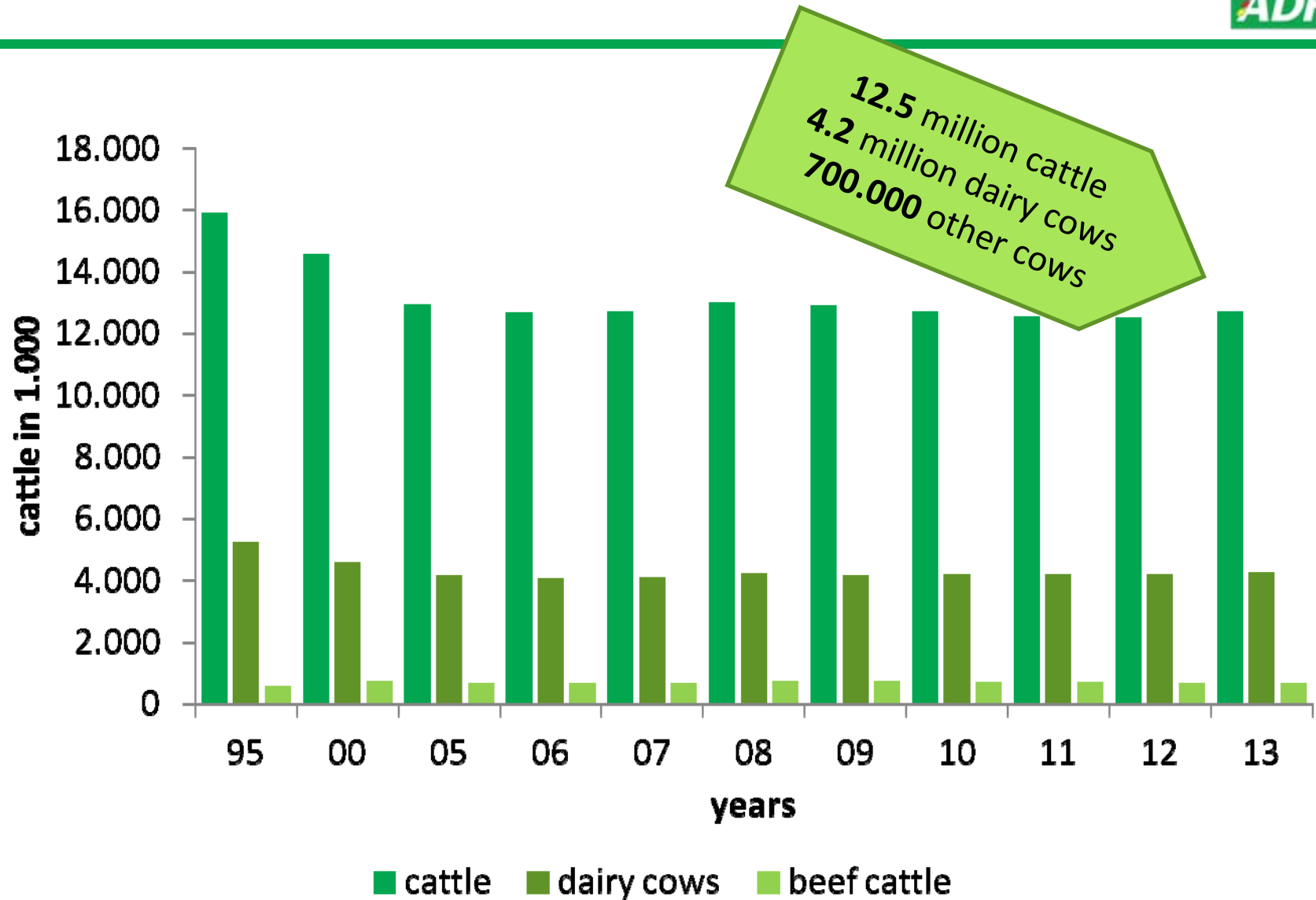
2010

Cattle per 100 ha agricultural area

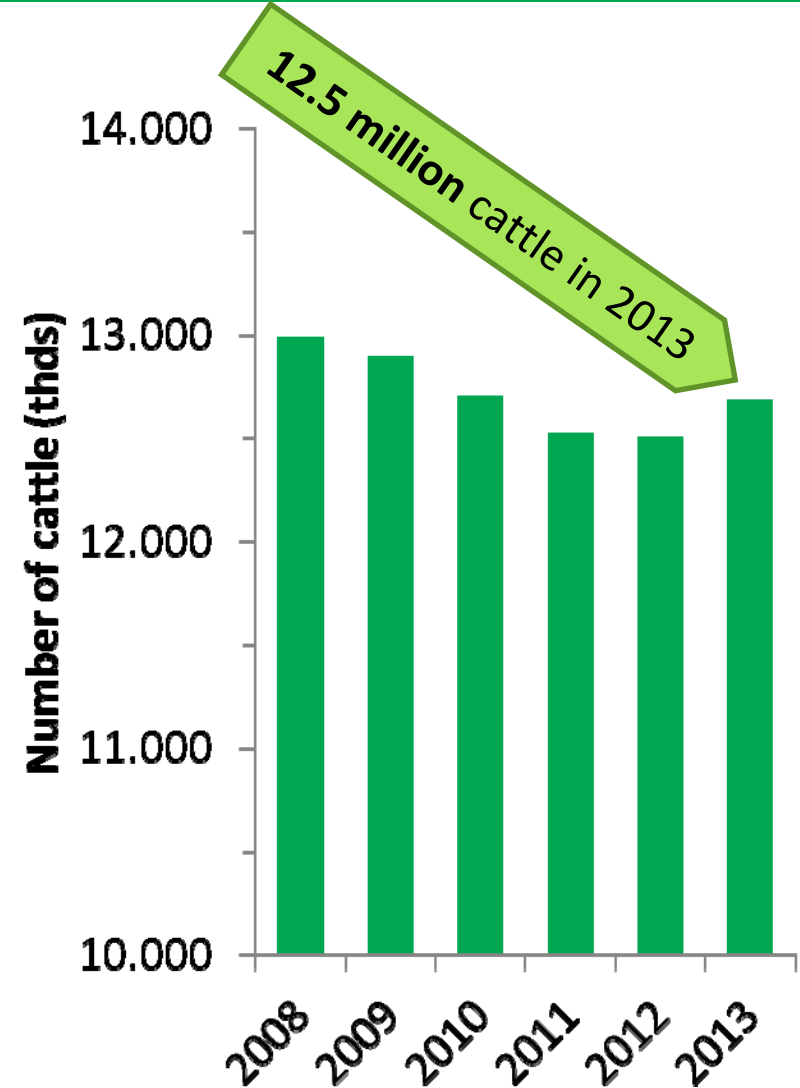
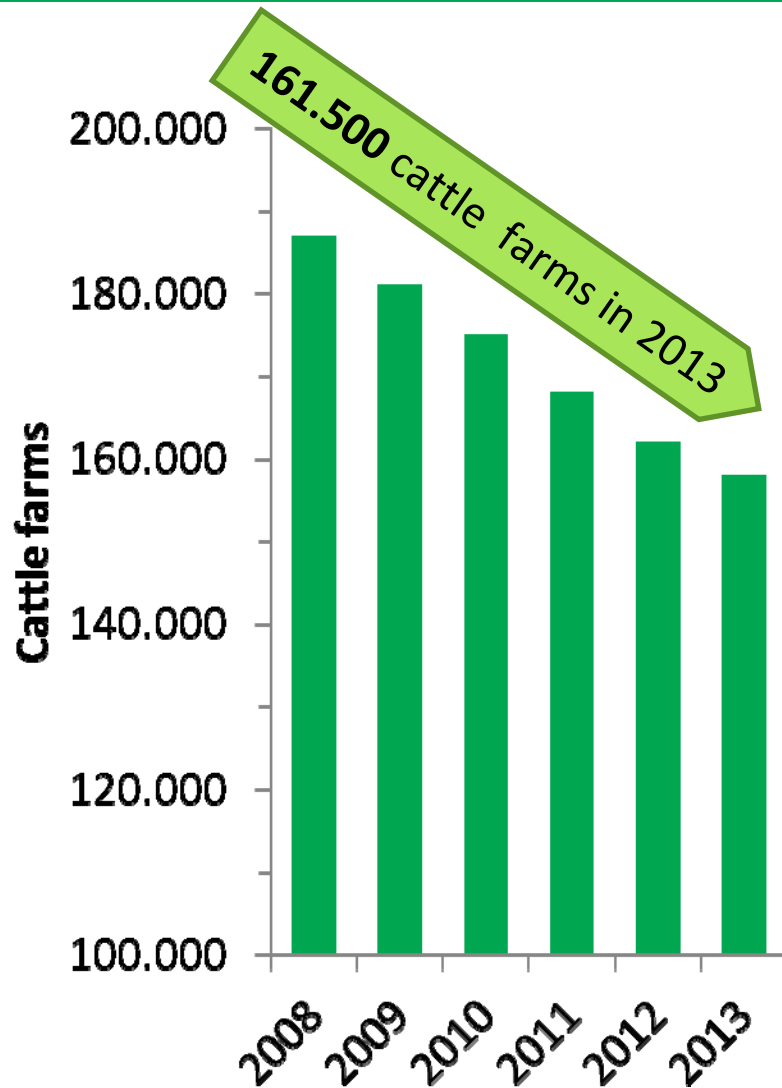


- Main areas for cattle management in Germany
 - Lower Saxony
 - North Rhine-Westphalia
 - Bavaria

Cattle production in Germany



Structural change in dairy industry



86 % of all dairy cows are monthly recorded

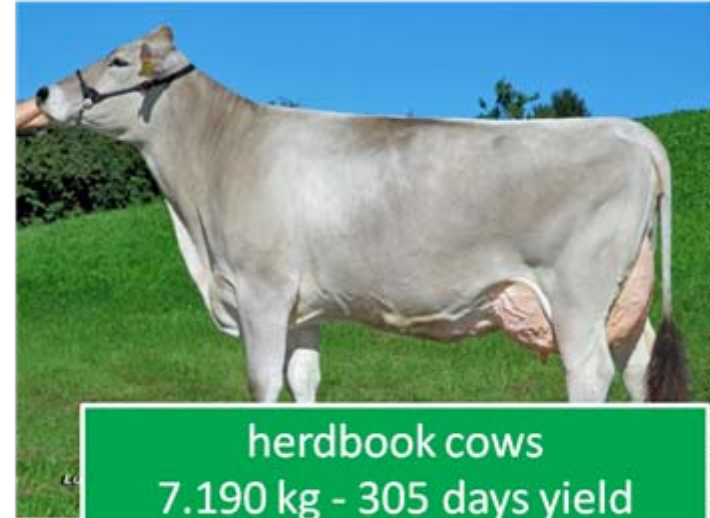


Dairy cows		4.2 million
Monthly recorded cows (DHI)		3.6 million
Herdbook cattle		2.7 million
<i>Holstein</i>	<i>1.780.000</i>	
<i>Fleckvieh/Simmental</i>	<i>718.000</i>	
<i>Brown Swiss</i>	<i>149.000</i>	
<i>Rare Breeds</i>	<i>18.000</i>	
<i>Beef Breeds</i>	<i>64.000</i>	

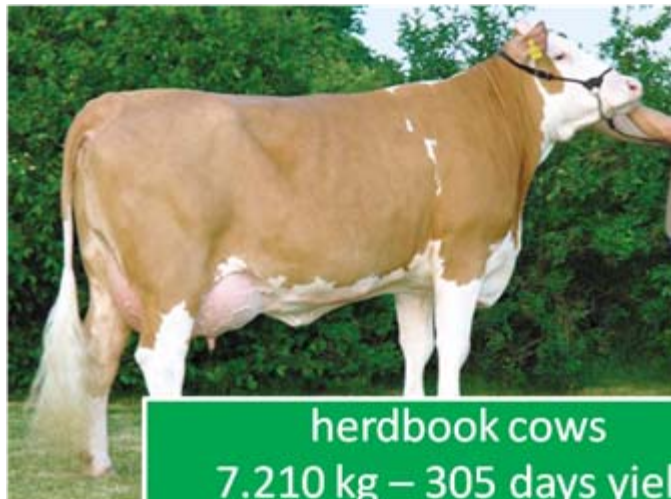
Main breeds: Holstein, Fleckvieh and Brown Swiss



herdbook cows
9.013 kg - 305 days yield
4,00 % fat - 3,33 % protein

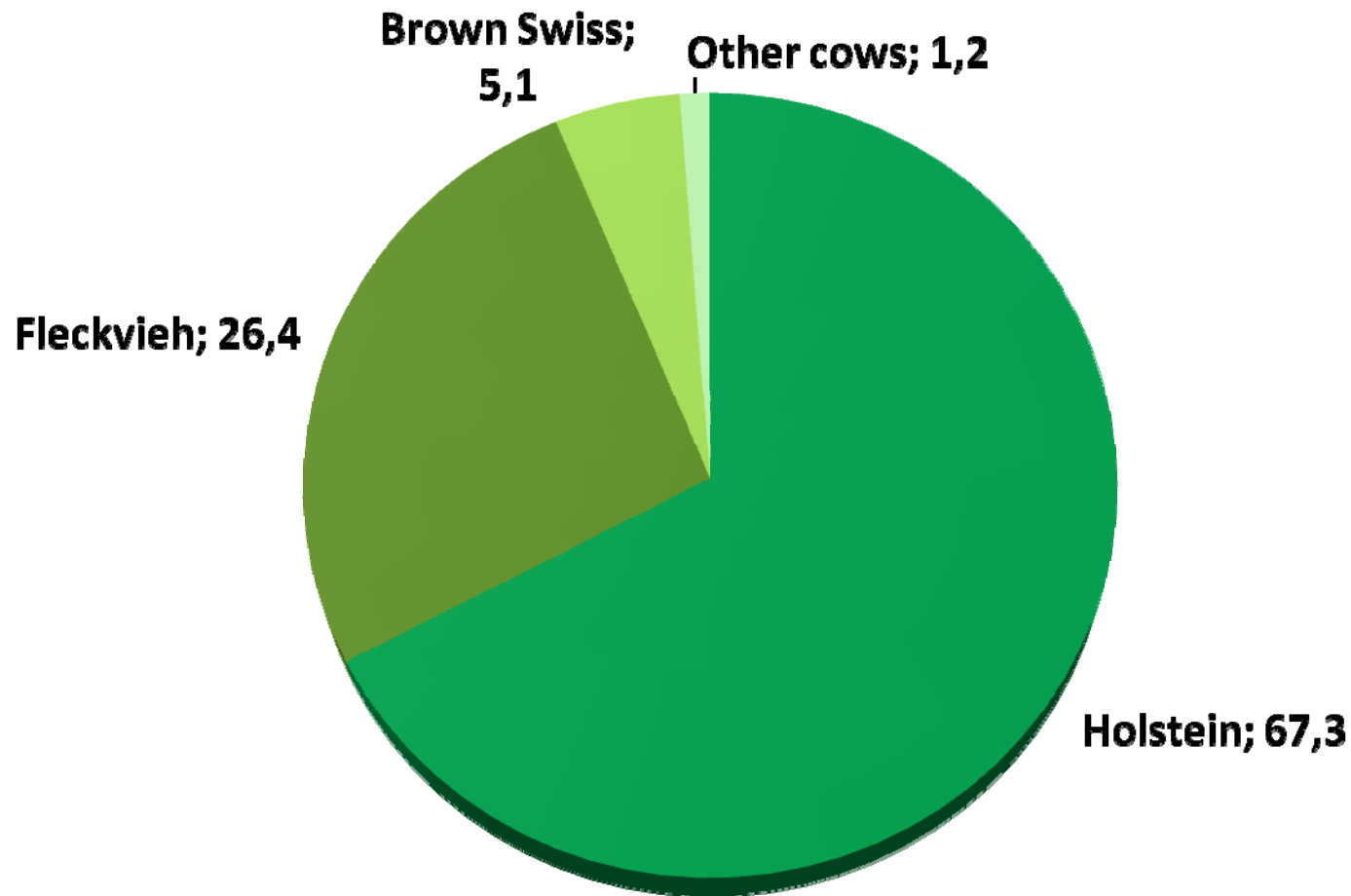


herdbook cows
7.190 kg - 305 days yield
4,16 % fat - 3,55 % protein



herdbook cows
7.210 kg – 305 days yield
4,09 % fat – 3,48 % protein

Holstein is the main breed in Germany



Housing system for animal welfare



74 % of dairy cows
in loose house

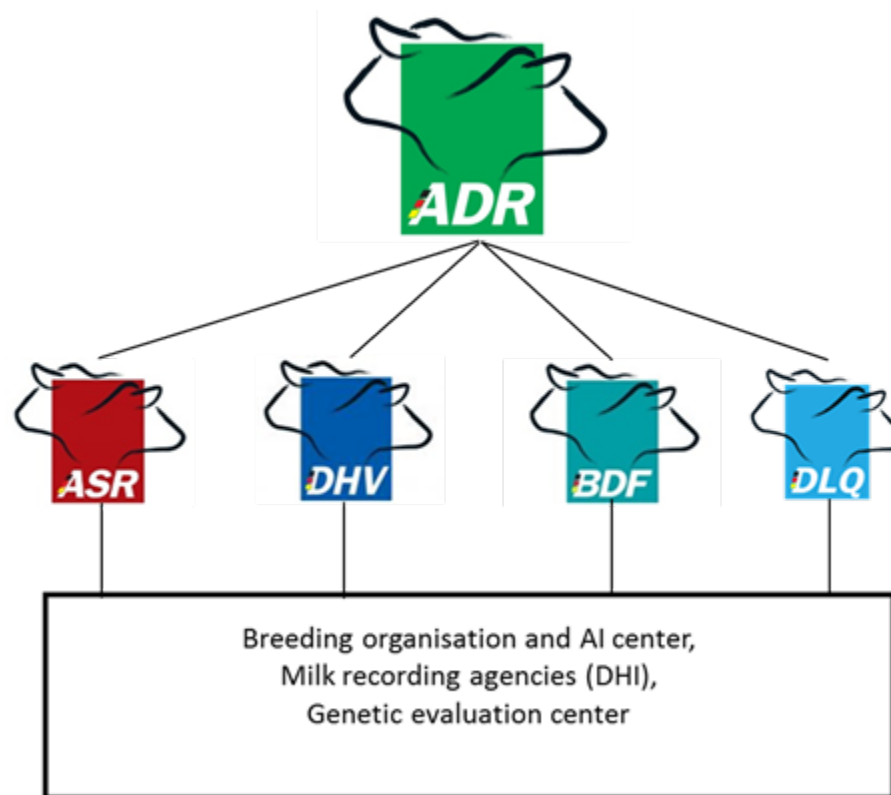


21 % of dairy cows in
tied stall barns



42 % of all dairy cows
utilization of pastures

All organisation bundled under one banner



ADR: main contact for cattle breeding in Germany



umbrella organization of
organized cattle industry

represents interest on
national and
international level

close contact with
political and
administrative level

ADR: main contact for cattle breeding in Germany



- Topics

- Animal breeding
- Animal health
- Animal welfare
- Animal transport
- Sanitary protocols



Future demands



Future demands



animal health

animal welfare

market situation

structural changes

political conditions

consumer demands

Thank you for your attention!



animal health

animal welfare

market situation

structural changes

political conditions

consumer demands