

Pro-active Herd Management –a brief status

ICAR General Assembly 2007

Manufacturers' Presentations
Verona, Italy
Thursday 31 May 2007

Steen Kold-Christensen
Int. Key Account Manager
FOSS

Herd Navigator Slide 1

Agenda

- Brief summary from Kuopio meeting June 2006
- Partners
- Concept
- Product
- Biomodel example
- Vision
- Status
- Video

Herd Navigator Slide 2

Summary from ICAR Kuopio June 2006

- On-farm monitoring of milk parameters
by Ole Lind, DeLaval
- Future trends in the Milky Way
by Steen Kold-Christensen, FOSS
- Proactive Herd Management project

Herd Navigator Slide 3

The Partners

- Danish Cattle Federation
- Farm advisors/ veterinarians
- Lattec
- Biosens
- DeLaval
- FOSS
- Eurofins Steins



Herd Navigator Slide 4

The history of in-line measurements – a strategic effort of research!

- “Memo experiments” at Skovgaard experimental station (1990 – 2000)
 - 14 parameters investigated for 10 years – including 653 lactations
 - FOSS as a service partner
- The Biosens research cooperation
 - Lattec (FOSS and DeLaval)
 - Danish Institute of Agricultural Sciences
 - Danish Cattle Research Centre
 - Danish Cattle Federation

Herd Navigator Slide 5

The solution

HerdNavigator

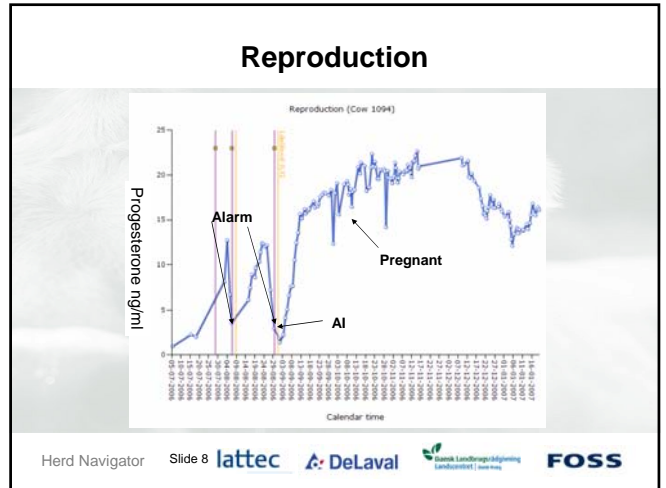
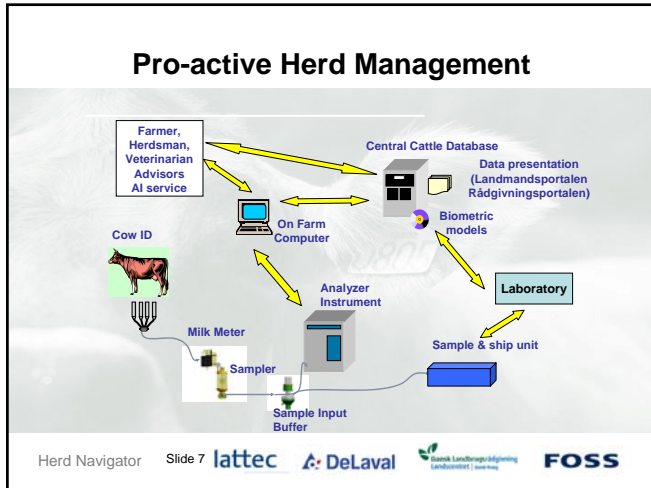
The concept

- On-farm Herd Management solution optimizing:
 - Reproduction
 - Oestrus
 - Pregnancy
 - Disorders
 - Mastitis
 - Protein
 - Energy - Ketosis
 - Feeding

The product

- Upgrade-to-fit kit
- Capital Goods
 - Automatic proportional sample – low carry-over transport
 - Automatic analytical instrument
 - Bio models
 - Decision support software
- After Sales
 - Quantitative dry sticks tests for
 - Progesterone (~30 t/cy)
 - Lactatedehydrogenase (LDH) (~200 t/cy)
 - Urea (8 t/cy)
 - β -Hydroxybutyrate (BHB) (60 t/cy)
 - Software updates, spares etc
- Knowledge
 - Education and advisory support

Herd Navigator Slide 6



Vision

*...within seven years
1/3 of Danish Dairy Farmers
will benefit from
an automatic Pro-active
Herd Management System
linked directly to the
Central Cattle Database
with high-speed data exchange
giving them a unique leading position
in the fast changing global market
with quotas and subsidies fading away....*

Herd Navigator Slide 9 **lattec** **DeLaval** **FOSS**

- ### Project status
- **Prototype 3 phase**
 - **Installed successfully on 6 test farms in Denmark**
 - Two have been in operation 2 & 3 years respectively
 - Four have been put in operation January - May 2007
 - **Focus on**
 - Robustness & reliability
 - Validation of the biometric models
 - Development of SOP
 - Validation and proof of farmers values
- Herd Navigator Slide 10 **lattec** **DeLaval** **FOSS**

- ### Market introduction in Denmark
- Concept & project was presented at Danish Cattle Federation Congress February 2007
 - 6 presentations submitted including testimonial from a test farm
 - 600 farmers & advisors participated
 - Plan to introduce the Herd Navigator concept in one region in Jutland end 2007
 - Roll-out in more regions in Denmark during 2008
 - Introduction in 2-4 countries beyond Denmark in 2009
- Herd Navigator Slide 11 **lattec** **DeLaval** **FOSS**

