

ICAR LATVIA

June 2010

Use of Tru-Test Electronic Milk Meter (EMM) in France

CL62-Pas de Calais

Christian Lhomme



France background

► Statistics:

- 4M dairy cows across 100,000 herds
- Average herd size around 40 cows
- Over 60% of herds are on test
- Over 2,300 x Tru-Test RFID EMM's

► System:

- 70+ independent regional herd test associations
- 12+ French regions using EMM's
- Replacing technician testing with farmer testing
- Standard PM/AM herd test – 2 milk samples in same RFID vial
- Sample vial RFID tag data carrier from farm to lab
- Parlour RFID integration to Tru-Test EMM e.g. RFID Anklets



CL62-Pas de Calais background



- ▶ Herd test centre based in northern France
- ▶ 720 x Tru-Test RFID Electronic EMM's
- ▶ 77 x Tru-Test Data Handlers
- ▶ CL62 technicians use PDA units
- ▶ TG Lait management software
- ▶ 900 herds on Control A technician testing
- ▶ 270 herds on Control B farmer self-testing
- ▶ CL62 is EMM Service Centre for France

La situation CL62-Pas de Calais

- ▶ EMM's and PDA's used over last 2 years
- ▶ Finishing deployment of EMM's for Control B farmers
- ▶ Testing RFID Low Frequency anklets (ARaymond France)
- ▶ Integration of RFID Low Frequency anklets into herd test system
- ▶ Integration EMM RFID High Frequency milk sample vials in lab



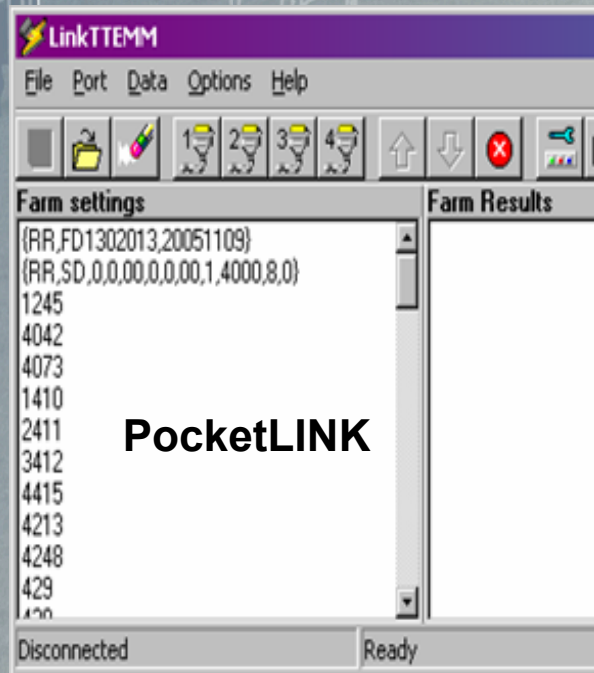
CL62-Pas de Calais system



Before going to farm

► Bluetooth Herd File from PDA into Data Handler:

- Cows pre-loaded from TG Lait/PDA to Data Handler before herd test
- Tru-Test PocketLINK software formats data during upload process
- Upload file includes testing configuration settings for that farm



PocketLINK



PDA



Bluetooth



TRU-TEST®

RFID EMM on-farm

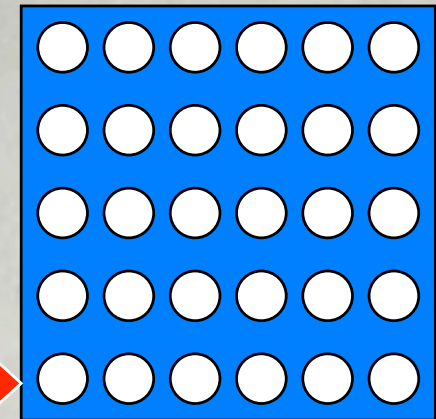
Read RFID anklet



Cow ID selected onto EMM



EMM writes cow test data to RFID tag at end of milking with vial placed in tray



Proactive feedback on-farm

- ▶ Printout (or soft copy) for farmer at end of milking

Printout includes:

Herd ID

List of cow ID's with volume recorded

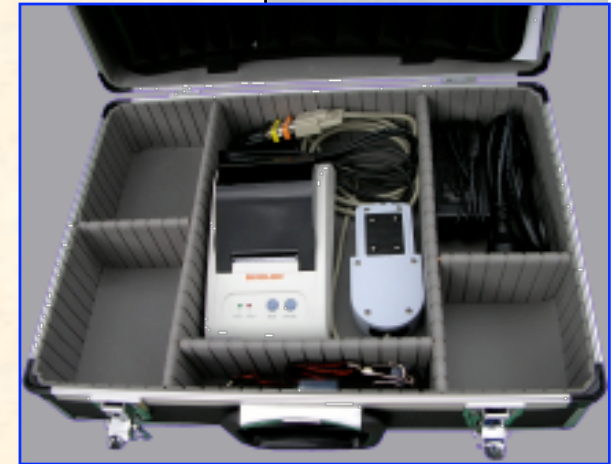
List of cows ID's with entered status codes

List of cow ID's pre-loaded but NOT milked

List of cow ID's milked but NOT IN database

Average production figures for herd by session

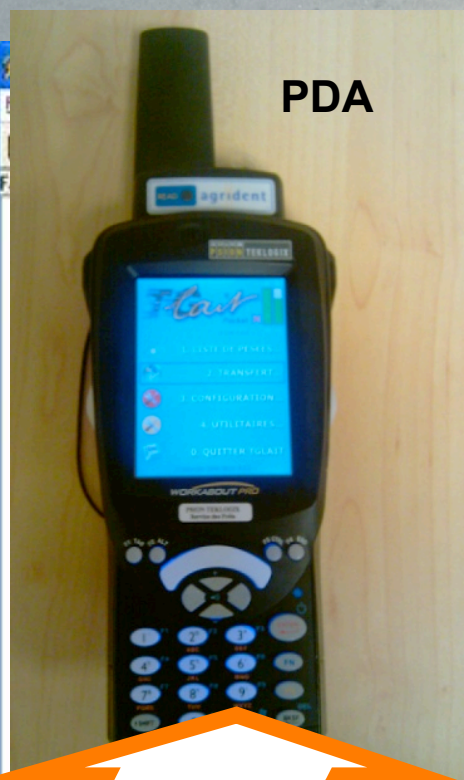
EMM & Data Handler battery charges



After the herd test

► Downloading data:

- Data Handler download to PDA using Tru-Test PocketLINK
- Herd update in TG Lait software used by Pas de Calais
- Data also read off tag at lab e.g. herd ID, cow ID, volume, sample ID



Bluetooth

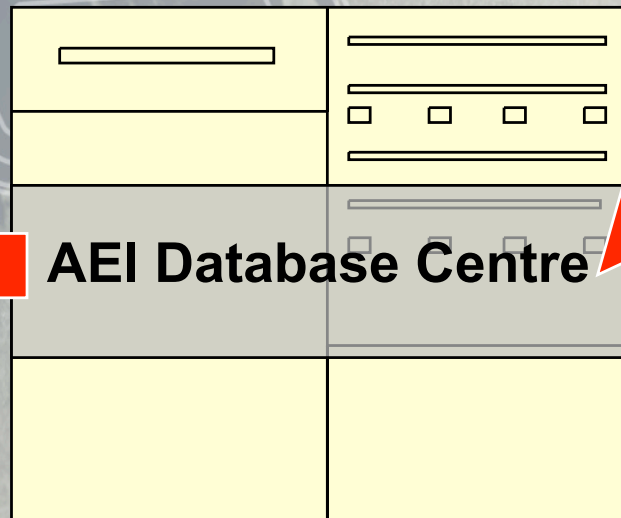
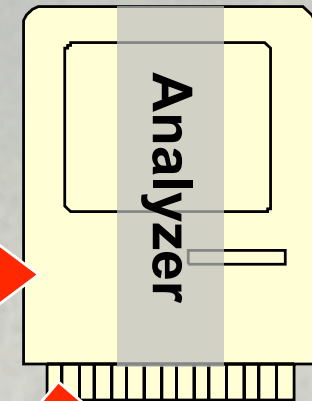
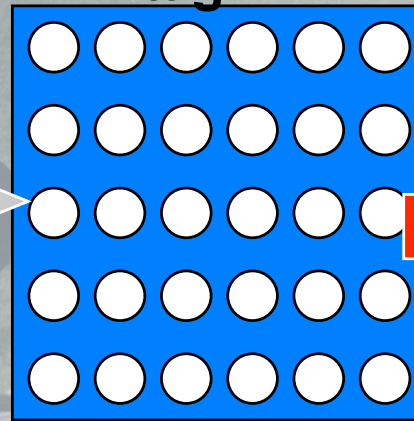


Lab & data processing

Optional CL-62 lab reader



In-line CL62 lab reader scans
data on EMM milk sample vial
tag

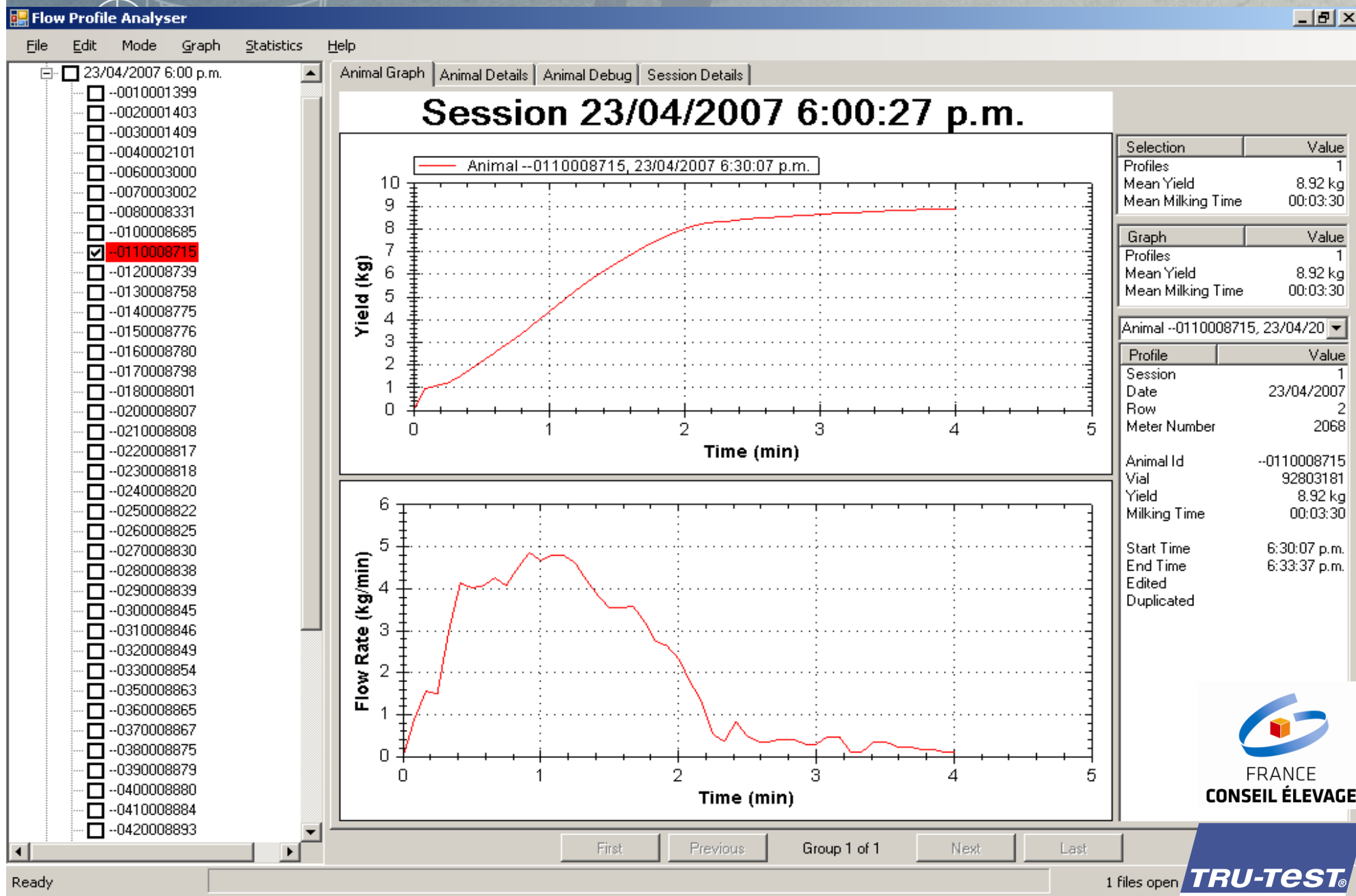


WEB SERVICE

Report same day for
farmer via internet



Flow Profiles downloaded



CAL



MTR



EMM servicing

► Levels of servicing are:

- Simple 16kg water test on Fast Flow Test Rig
 - Same test as with Tru-Test Mechanical Milk Meters
- Electronic Rigs:
 - Calibration Test Rig (CAL Rig)
 - All EMM calibrations
 - Electronic repairs go through recalibration
 - Mega Test Rig (MTR Rig):
 - Functional testing after repair
 - Full EMM operational check

► France EMM Test Rigs at CL62:

- Other EMM Service Centres in:
 - Denmark (TTS)
 - Ireland (ICBF)
 - USA (CRI/AgSource)
 - Tru-Test New Zealand

