

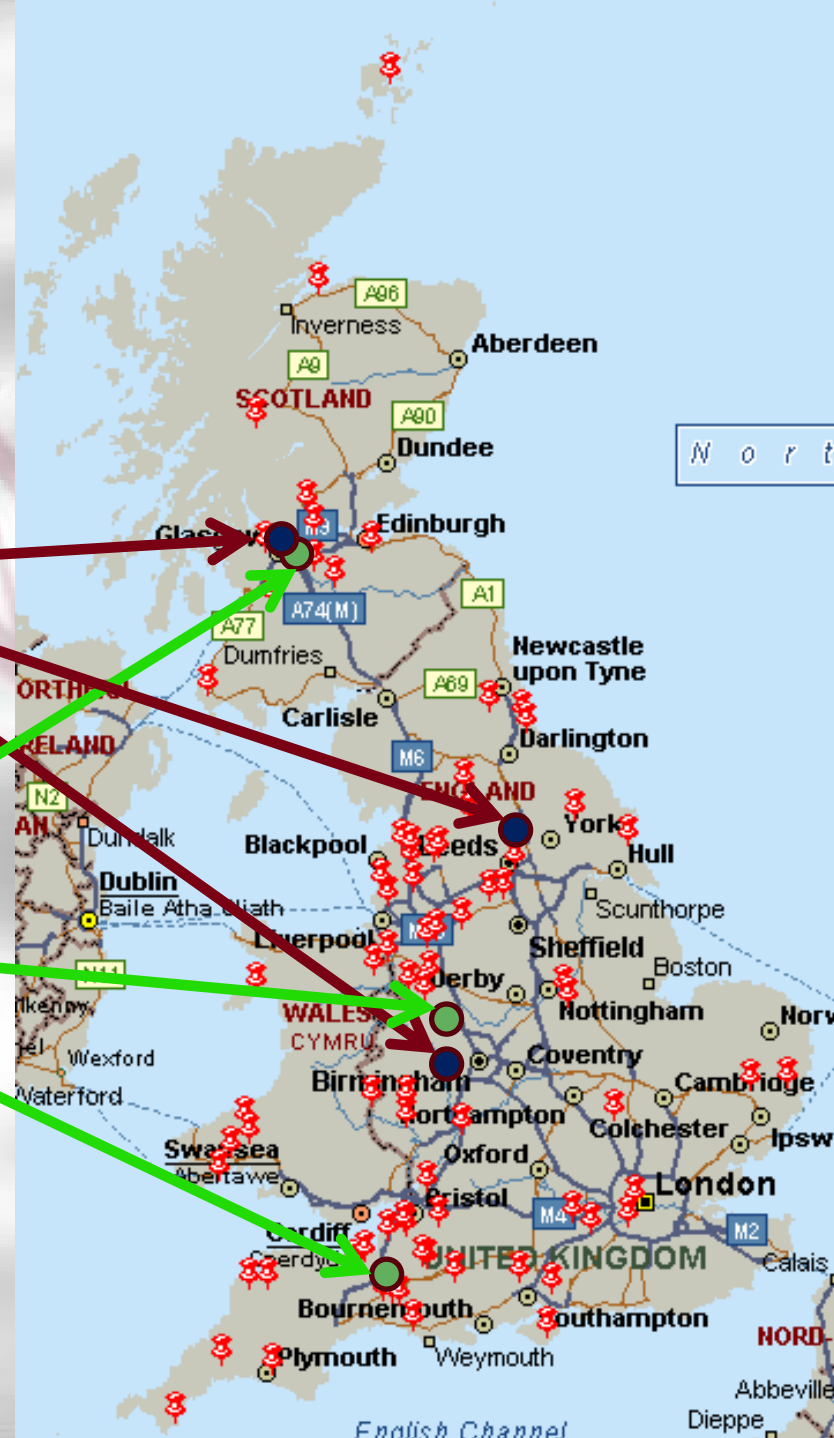
# **Improving the management of the dairy cow through use of the Herd Companion on line website**

**Tony Craven**

**NMR Group Operations Manager**



# NMR Groups locations





## Latest News

15 May 2009

Award winning Dorset dairy herd to host RABDF NMR Gold Cup Open Day

11 May 2009

NMR on the Road Shows and Events for 2009

7 April 2009

Ayrshires Award Top Herd in Gold Cup Competition

12 March 2009

NML Wins Major New Disease Surveillance Contracts

12 March 2009

NMR Publishes Latest Production Results

[more news...](#)

Contact Customer Services on 0870 162 2547 or [click here](#) to email

## Whatever your needs...

NMR has the milk recording service to suit you:

- 3, 4, 6, 8 weekly
- factored or non-factored
- DIY or with field technician support
- ad hoc cell counting and other microbiological tests
- on-farm software and support

[Total herd Recording](#)

## Welcome to NMR

NMR is the leading supplier of milk recording services in the UK, providing management information on individual cow's performance in terms of milk quality, yield and fertility.

It is acknowledged by the industry that NMR is the market leader in the provision and support of dairy software in Great Britain.

NMR also supplies aggregate data to over 35 dairy industry bodies including milk buyers, MDC Evaluations and breed societies.

## Bringing you new services to help you make the most of your business..

View the latest products from NMR below

### Herd Management Diary

The 2009 Herd Management Ring Binder Diary is now available. The diary includes sections on service records, calving details, including calving ease, animal movements and medical records.

Priced at £19.50 plus VAT, [click here for more information...](#)



### Identifying the Causes of Milk Quality Problems



High somatic cell count and bactoscan can have a major impact on your milk cheque, not just in terms of

## Herd Companion

### NMR Lifetime Daily Yield Improved Functionality in Herd Companion!

We are pleased to announce new functionality to the Lifetime Daily Yield. The report now includes vital data on factors affecting health and longevity and cows can be ranked on any of the criteria included....



Contact Customer Services on 0870 162 2547 or [click here](#) to email

### New from NMR Group



**Pocket Cow Manager** NMR's versatile and highly acclaimed software for a PDA is now available to link with Interherd and ImpelPro. Pocket Cow





Home

Services

Software

News

Company

Herd Companion

## Latest News

15 May 2009

Award winning Dorset dairy herd to host RABDF NMR Gold Cup Open Day

11 May 2009

NMR on the Road Shows and Events for 2009

7 April 2009

Ayrshires Award Top Herd in Gold Cup Competition

12 March 2009

NML Wins Major New Disease Surveillance Contracts

12 March 2009

NMR Publishes Latest Production Results

[more news...](#)

Contact Customer Services on 0870 162 2547 or [click here](#) to email

## Whatever your needs...

NMR has the milk recording service to suit you:

- 3, 4, 6, 8 weekly
- factored or non-factored
- DIY or with field technician support
- ad hoc cell counting and other microbiological tests
- on-farm software and support

Total herd recording

## Welcome to NMR

NMR is the leading supplier of milk recording services in the UK, providing management information on individual cow's performance in terms of milk quality, yield and fertility.

It is acknowledged by the industry that NMR is the market leader in the provision and support of dairy software in Great Britain.

NMR also supplies aggregate data to over 35 dairy industry bodies including milk buyers, MDC Evaluations and breed societies.

## Bringing you new services to help you make the most of your business..

View the latest products from NMR below

### Herd Management Diary

The 2009 Herd Management Ring Binder Diary is now available. The diary includes sections on service records, calving details, including calving ease, animal movements and medical records.

Priced at £19.50 plus VAT, [click here for more information...](#)



### Identifying the Causes of Milk Quality Problems



High somatic cell count and bactoscan can have a major impact on your milk cheque, not just in terms of

## Herd Companion

### NMR Lifetime Daily Yield Improved Functionality in Herd Companion!

We are pleased to announce new functionality to the Lifetime Daily Yield. The report now includes vital data on factors affecting health and longevity and cows can be ranked on any of the criteria included....



LIFETIME YIELD

Contact Customer Services on 0870 162 2547 or [click here](#) to email

### New from NMR Group



**Pocket Cow Manager** NMR's versatile and highly acclaimed software for a PDA is now available to link with Interherd and ImpelPro. Pocket Cow



NMR Herd Number: 109082301

Menu

Logout

Name: CLINTON DEVON FARMS (OTTER HERD)

## Main Menu

Welcome to Herd Companion **PRO**

**LTY**  
LIFETIME YIELD

**FM**  
FEED MONITOR

**HM**  
HEALTH MONITOR

**SCC**  
SWIFT CELL CHECKER

**MIM**  
MOBILITY MONITOR

**MQM**  
MILK QUALITY MONITOR

**MM**  
MICRO MONITOR

**DM**  
DISEASE MONITOR



**KPI**  
KEY PERFORMANCE INDICATORS

**FM+**  
FEED MONITOR *plus*

**HM+**  
HEALTH MONITOR *plus*

**REPORTWRITER**

**CHANGE PREMISES**

# **Accessing the system**

- **Access to Herd Companion is free**
- **Herd Companion Pro is free for InterHerd users**
- **Need for farmer permission for advisors to access farm data**
- **Same permission form used for NMR results, NML milk quality results and for disease and microbiology test results**



- **NML payment test results on line**
- **Available for all NML herds using latest NML database**
- **No requirement to be milk recording with NMR**
- **Free to farmers and third parties (if authorised by the farmer)**




[Explain](#)
[Definitions](#)

## Select a premises

[View BMGs](#)
[View](#)
[Edit defaults](#)

Premises	Name	Type	Latest recording	SCC threshold	Last NML Bulk Disease Test	Last individual cow disease test	Last Mobility Score
098831601		ACT	08/12/2009	200	09/10/2009	09/10/2009	-
046577603		ACT	18/11/2009	300	06/11/2009	18/11/2009	-
097812102	A G PHILLIPS	ACT	01/12/2009	200	12/10/2009	12/10/2009	-
085845501	A G TWINE	ACT	07/12/2009	200	14/10/2009	07/10/2009	-
028389601	A J A DILKS & SONS	ACT	08/12/2009	200	09/11/2009	24/11/2009	-
044565801	A KIRKHAM & SON	ACT	01/12/2009	300	07/10/2009	07/10/2009	-
025837101	C & S MALPASS LTD	ACT	24/11/2009	200	22/09/2009	22/09/2009	-
025607401	C & S R MOORHOUSE	ACT	03/12/2009	200	07/10/2009	07/10/2009	-
109082301	CLINTON DEVON FARMS (OTTER HERD)	ACT	18/11/2009	200	18/11/2009	25/11/2009	-
109082306	CLINTON DEVON FARMS PARTNERSHIP	ACT	25/11/2009	200	25/11/2009	25/11/2009	-
108523701	D C LEWIS & SON	ACT	13/11/2009	200	14/09/2009	14/09/2009	-
057435001	D H & D R SMART	ACT	24/11/2009	200	12/11/2009	26/10/2009	-
096811301	D J & Z E PARRETT	ACT	19/11/2009	200	05/12/2009	11/09/2009	-
085966701	E B J M & P R DENTON	ACT	24/11/2009	200	15/10/2009	15/10/2009	-
098019801	E G CARY	ACT	25/11/2009	200	23/09/2009	23/09/2009	-
097536001	E J WEBB & SON	ACT	30/11/2009	200	06/12/2009	02/10/2009	-
025297901	F B WILLIAMS	ACT	03/11/2009	200	07/10/2009	07/10/2009	-
086144302	FARLEY FARMS	ACT	23/11/2009	200	01/12/2009	23/11/2009	-
086144302	FARLEY FARMS	ACT	23/11/2009	200	01/12/2009	23/11/2009	-
024541001	G & E STABLE & SON	ACT	26/11/2009	200	26/11/2009	26/11/2009	-
029166701	G BACON	ACT	30/11/2009	200	05/10/2009	05/10/2009	-
028205501	G W & R I MELLOR & SON	ACT	01/12/2009	200	11/08/2009	29/04/2009	-



**NMR Herd Number:** 056762702

**Lower Range:** 200

**Upper Range:** 99999

**Name:** HARTPURY COLLEGE, FAO Peter Lord

**Recording Date:** 23/11/2009

**Summary of Cell Count Results**

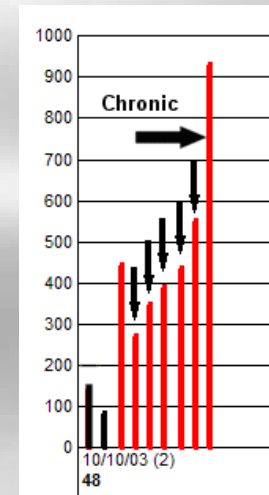
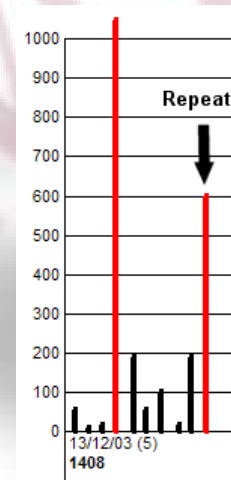
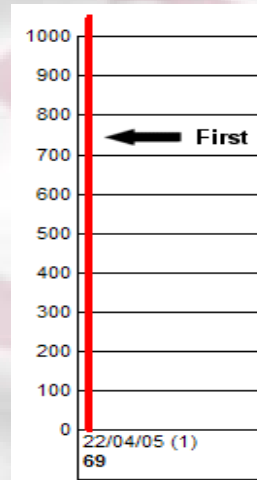
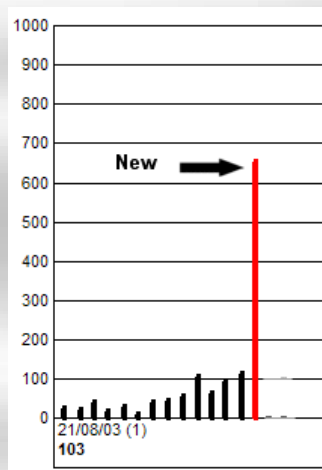
Rolling Annual Average of Whole Herd	193				
This Month's Herd Average	176				
Average test for:	2 Sep	3 Oct	Nov	Total Cows-Nov	
1st lactation	115	86	83	72	
2nd lactation	181	150	165	81	
3rd lactation	230	231	194	91	
4th lactation	197	176	254	48	
5th lactation and over	231	131	204	24	

Animal	Line	Lact	Days	Mast	Lact Avg	No.>200	1 Aug	2 Sep	3 Oct	Nov	% of Total
2875	2875	4	20		5669	1	279	119		5669	13
417	0417	5	245		180	2	51	82	838	4664	2
B BUSTER JANE 15	3170	2	475	1 26 Sep	343	7	107	123	124	1315+	0
2346	2346	3	344		120	3	183	433	853	1298++	0
739	0739	2	313		388	9	881	748	549	1175++	1
5857	5857	3	292	1 08 Aug	81	1		63	107	1064+	1
3995	3995	3	181		905	6	1129	1252	1418	1057++	2
129	0129	6	239		541	7	510	817	419	1035++	1
2713	2713	3	301		490	8	391	450	1343	1029++	1
7426	7426	2	71		593	2		68	571	961	3
2645	2645	3	393		147	5	258	238	220	927++	0
100	0100	3	186		422	4	51	286	1444	819++	2
L CHANCERY 856	2829	2	317		1123	8	1644	536	736	794++	1
2282	2282	4	444		142	5	436	636	896	792++	0
507	0507	3	316	1 12 Aug	171	4		169	136	758+	0
749	0749	2	311		142	3	76	140	247	709	1
DARLTON EROS DILLY 1	0003	3	82		338	2		306	27	699+	2
2064	2064	4	190	3 06 Aug	749	4		251	207	682++	0
740	0740	2	348	1 14 Aug	330	5		329	253	674++	0
B SINATRA BELLA 22	9771	3	453		124	5	342	365	327	611++	1
224	0224	6	336		627	9	1041	350	433	611++	1
3101	3101	3	85		391	3		248	295	595++	2
L STRAWBERRY 17	0126	7	321		391	5	156	171	194	589+	1
2545	2545	4	21		579	1	177	201		579	2
4744	4744	3	325	1 07 Apr	501	7		629	520	573++	1
287	0287	3	172		333	3	149	415	724	551++	1
3194	3194	2	392	1 29 Oct	80	2	90	87	237	490	1
2603	2603	4	77		298	2		332	76	490+	1



# Health Monitor

## Somatic cell counts: Four distinct types



NMR Herd Number: 056762702

Name: HARTPURY COLLEGE

SCC status summary. SCC threshold: 200,000

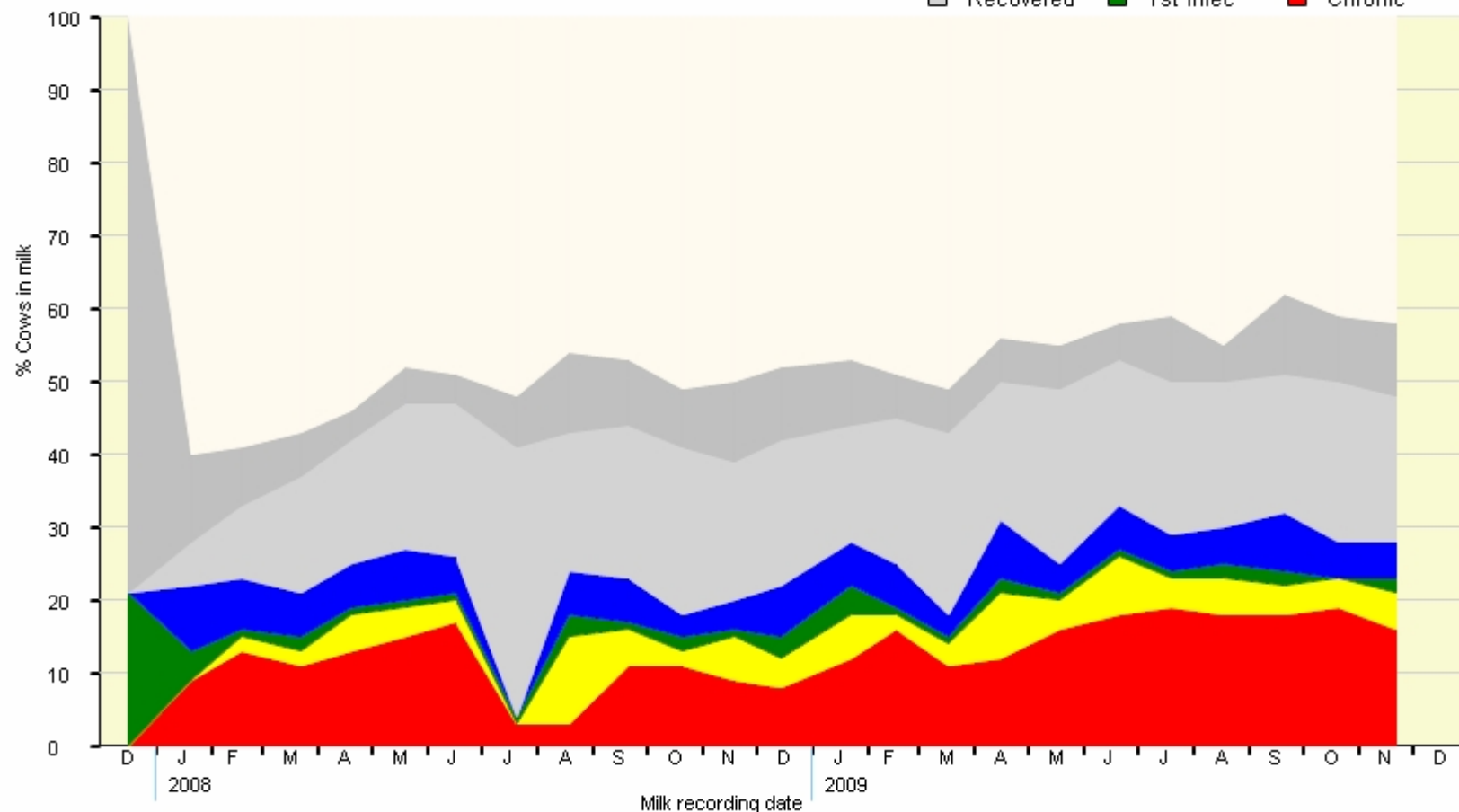
Recording Date: 23/11/2009

[Back](#)[Menu](#)[Logout](#)[Explain](#)[View Data](#)[Print Graph](#)

Y-Scale:

[0-20%](#)[0-50%](#)[0-100%](#)

Period from: 16/12/2007 to 16/12/2009

☐ Clear☐ 1st Uninfec☐ New☐ Repeat☐ Recovered☐ 1st Infec☐ Chronic



NMR Herd Number: 056762702

Name: HARTPURY COLLEGE

[Back](#)[Menu](#)[Logout](#)[Explain](#)[View Data](#)[Print Graph](#)

## Dry period performance. SCC threshold: 200,000

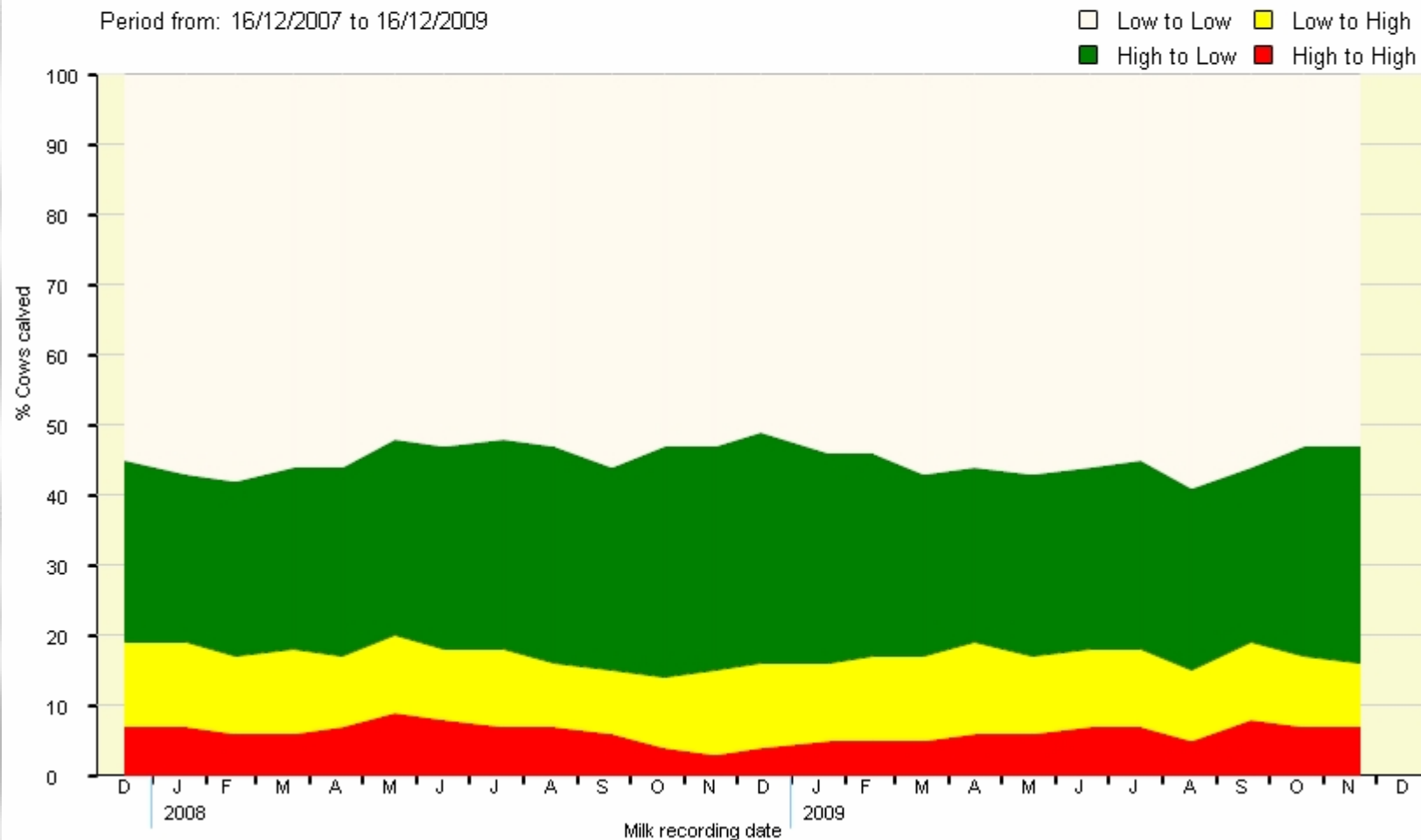
Cows calving within 300 days

Recording Date: 23/11/2009

Y-Scale:

[0-20%](#)[0-50%](#)[0-100%](#)

Period from: 16/12/2007 to 16/12/2009



NMR Herd Number: 056762702

Recording Date: 23/11/2009

Menu

Logout

Click on the bars to drill down

Explain

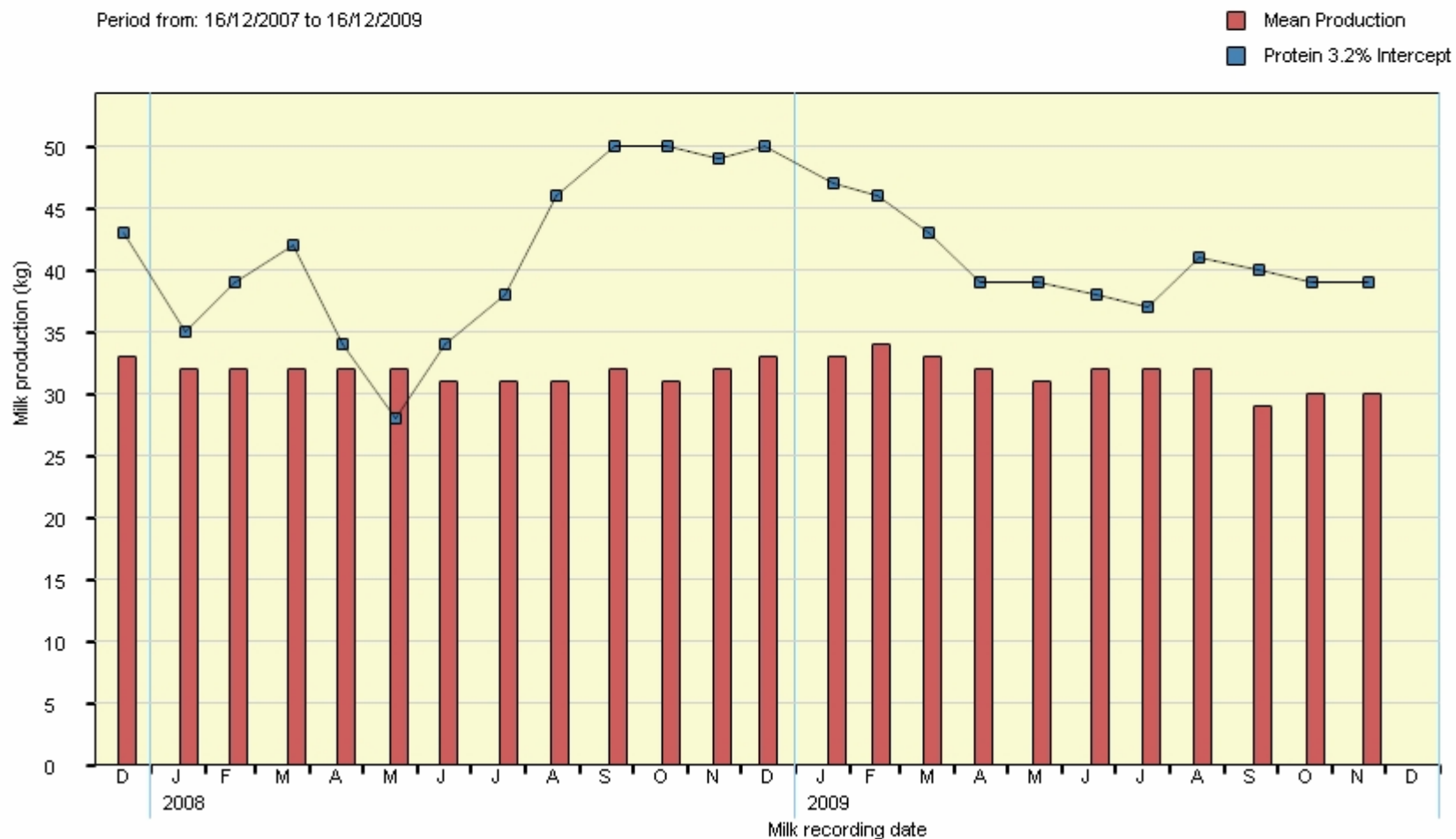
View Data

Print Graph



### FEED MONITOR

Period from: 16/12/2007 to 16/12/2009



NMR Herd Number: 056762702

[Back](#)
[Menu](#)
[Logout](#)

## Protein% vs Production

Recording date: NMR Herd Number: 056762702

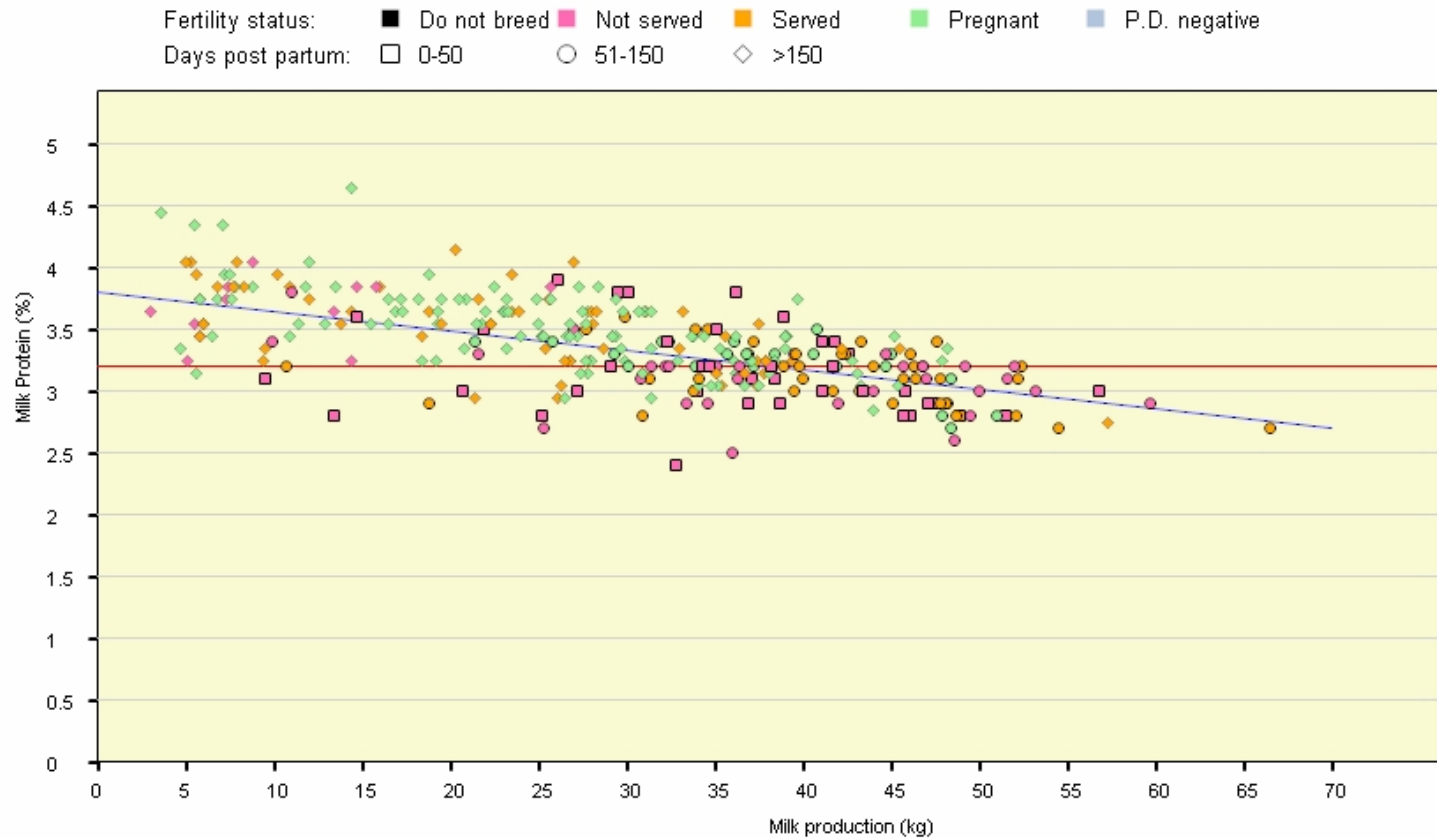
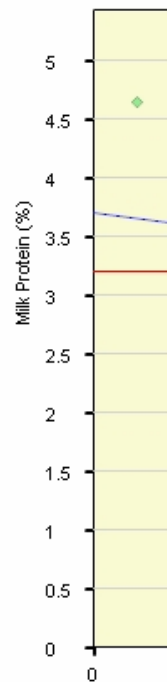
Line No:

[Clear all](#)
[Explain](#)
[Print Graph](#)
[Menu](#)
[Logout](#)

## Protein% vs Production

Recording date: 23/11/2009

Line No: 7596  
2059

[Clear all](#)
[Explain](#)
[Print Graph](#)
[Clear selected item](#)


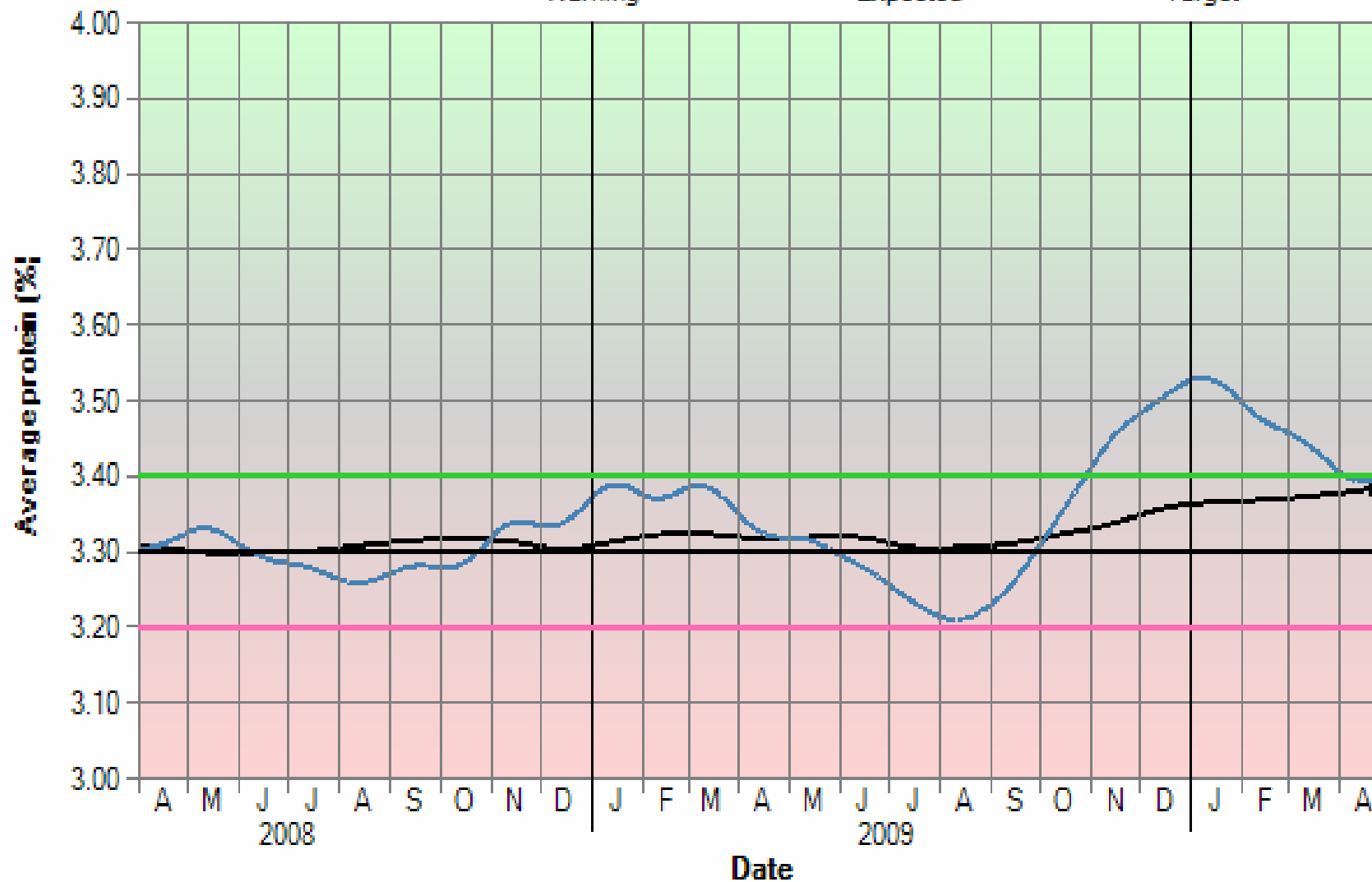




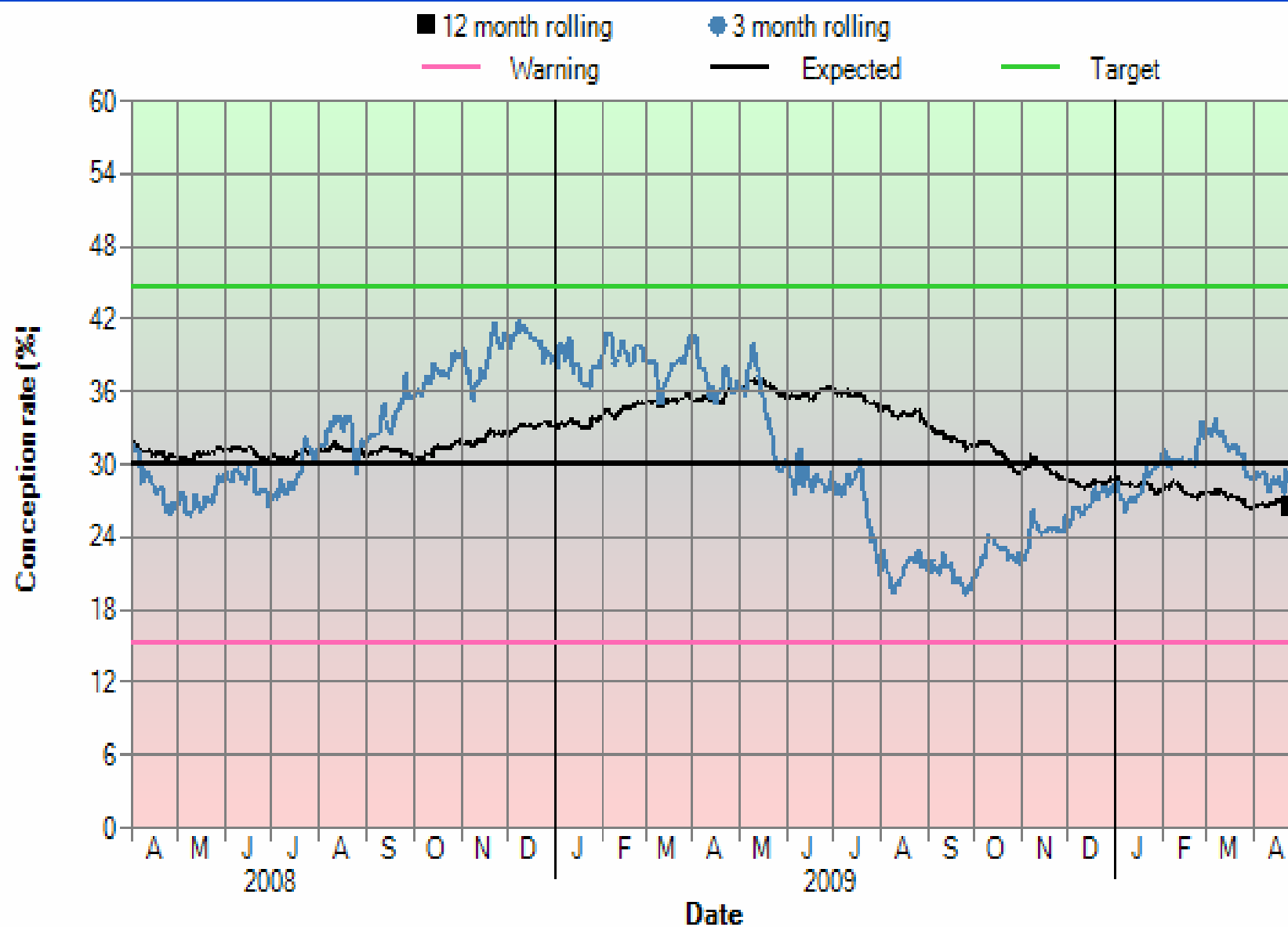
## Average protein (%)



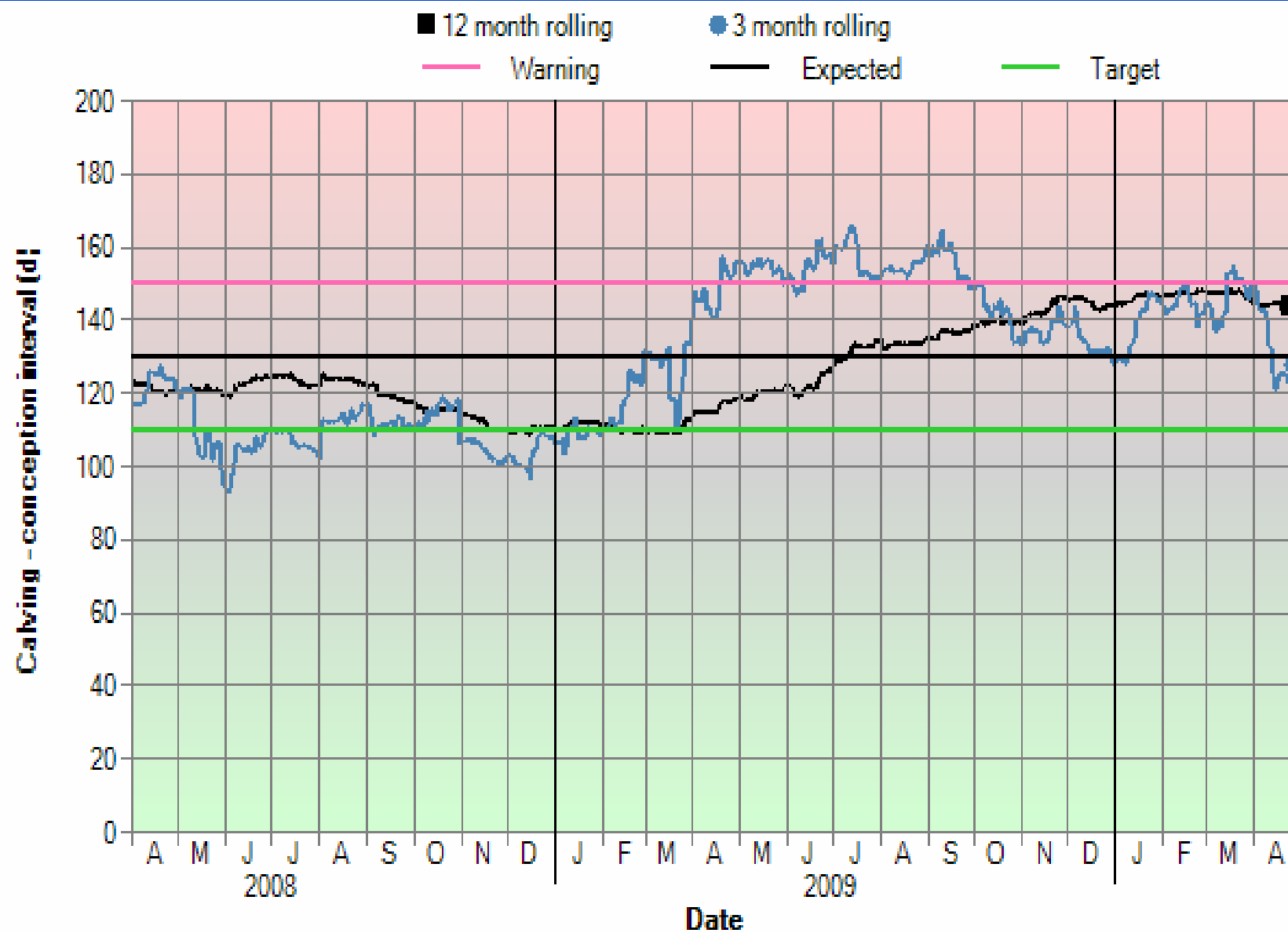
■ 12 month rolling    ● 3 month rolling  
— Warning    — Expected    — Target



# Conception rate (%)



# Calving - conception interval (d)





## Welcome to the HerdWise Johne's Screening Programme

This programme is run under the HerdWise scheme by National Milk Laboratories (NML) and is administered by the NMR group.

Individual cow milk samples are tested on a quarterly basis and results analysed to assign a Johne's status to each cow. For more information see the 'help' button at the top of the page.

### Select Report

Click on the relevant report below to view, print or save your quarterly management reports.



High Risk Cows



Low Risk Cows



Herd Summary



Line No.	Ear Tag	ELISA 19/08/2009	ELISA 18/11/2009	Days in Milk*	Milk Yield (kg)*	Parity	Milk Yield Drop	Predicted Calving Date	Infection Group on 18/11/2009	
7	366174402447	16.79	40.84	123	21.00	1	Likely		J4	?
11	343617300466	27.09	40.65	512	9.30	1	Likely		J4	?
56	366174301886	--	93.69	370	15.10	2	Likely	10/07/2010	J4	?
93	366174601931	--	103.73	14	25.70	2	Likely		J4	?
136	366174602267	--	48.56	392	21.90	1	Likely		J4	?
239	343617300494	2.70	114.57	135	23.10	2	Likely	24/08/2010	J4	?
348	366174201850	27.15	38.95	341	15.50	3	Likely	09/07/2010	J4	?
381	366174501216	36.91	--	951	10.40	2	Likely		J4	?
387	366174502098	7.29	68.69	503	19.60	1	Likely		J4	?

Line No.	Ear Tag	ELISA 19/08/09	ELISA 18/11/09	Days in Milk*	Milk Yield (kg)*	Parity	Milk Yield Drop	Predicted Calving Date	Infection Group on 18/11/2009	
1	366174501398	--	19.41	468	29.30	3	Not Likely		J1	✓
8	366174201332	4.40	--	468	14.80	3	Not Likely		J1	✓
13	VG0753/02243	--	3.92	558	23.40	8	Not Likely	07/08/2010	J1	✓
15	366174302124	--	0.79	455	25.70	1	Not Likely		J1	✓
22	366174102052	--	0.21	477	20.10	1	Not Likely		J1	✓
30	366174502084	--	2.20	496	26.10	1	Not Likely		J1	✓
39	366174301004	--	0.53	464	24.50	4	Not Likely		J1	✓

Results based on cows sampled on: (Only valid up to 4 months from specified sample date)

Line No.	Ear Tag	ELISA 11/12/2008	ELISA 10/03/2010	Days In Milk*	Milk Yield (kg)*	Partly	Milk Yield Drop	Predicted Calving Date	Infection Group on 10/03/2010	
19	165309100498	9.35	11.55	508	31.30	3	Very Likely		J5	1
64	165309100645	—	68.91	495	52.30	2	Very Likely	05/01/2011	J5	1
158	165309400039	55.04	52.50	486	31.10	6	Very Likely		J5	1
248	103841500248	60.64	48.10	428	41.20	4	Very Likely	29/11/2010	J5	1
11	166548100582	11.04	47.20	666	10.30	2	Likely	14/06/2010	J4	?
57	165309600657	27.58	33.11	236	26.60	3	Likely		J4	?
101	E3513/00433	22.99	52.58	260	8.80	8	Likely	14/07/2010	J4	?
195	165309500418	12.98	41.82	268	17.50	4	Likely	01/06/2010	J4	?
285	165309700539	11.40	43.66	343	6.90	3	Likely	21/11/2010	J4	?
298	165309600580	14.85	38.77	337	21.80	3	Likely		J4	?
499	262665500607	12.57	70.32	467	48.10	5	Likely	08/12/2010	J4	?

\*RED\* cows (High-risk cows) potentially culled prior to next calving (start with cows with high values).  
NO COLOSTRUM/MILK USED FOR CALVES

\*YELLOW\* cows (High-risk cows) require good hygiene around calving. Cull only if few high-risk cows.  
NO COLOSTRUM/MILK USED FOR CALVES

**VET COMMENTS:**

Start:   ☒ Cell count, SCC (x1000/mL) ☐ Butterfat (%) ☐ Protein (%) ☐ Urea (%)   
 Stop:   ☒ Bactoscan (x1000/mL) ☐ Lactose (%) ☐ Casein (%)

[Main KPI](#) [Menu](#) [Logout](#)

NMR Herd Number: 056762702

Name: HARTPURY COLLEGE

KPIs at a glance for last milk recording date: 23/11/2009

[KPI details](#) [Explain](#) [Print Graph](#)

Benchmark group:  View KPI Graph:

KPIs	'Worst'	'Best'	'Worst'	You	'Best'	Mean
Milk/Cow/Year of life		2994	7743	7113	5079	
Milk/Cow/Year		4846	10071	10120	8002	
Lactation Yield		5742	10876	9815	8545	
305 Day yield		4673	9679	8982	7662	
Protein/Cow/Year		155	311	331	259	
Fat/Cow/Year		188	379	474	315	
Ave. Protein %		3.04	3.53	3.27	3.24	
Ave. Fat %		3.54	4.49	4.68	3.94	
Mean Parity		2.28	3.85	2.74	3	
Calv. Interval<385 %		20.87	56.97	50.65	41.8	
Ave. Lactation length		385	322	311	322	
Ave. SCC		371	216	189	216	
%Cows in Parity 1		42.81	26.56	20.21	26.56	
Age 1st Calving		1121	881	819	881	
Ave. Calving interval		481	422	390	422	
Ave. Dry days		136	68	55	68	
Culling + Death %		49	26	35	26	
	Low	High	Low	You	High	Mean
Ave. No. Cows		275	390	412	390	

NMR Herd Number: 056762702

Print Graph

KPI Details

Menu

Logout

Name: HARTPURY COLLEGE

Min Y-axis: 0

Max Y-axis: 400

Change

### KPI glance details:

Ave. SCC

BMG: NMR04: Holstein herds > 300 cows

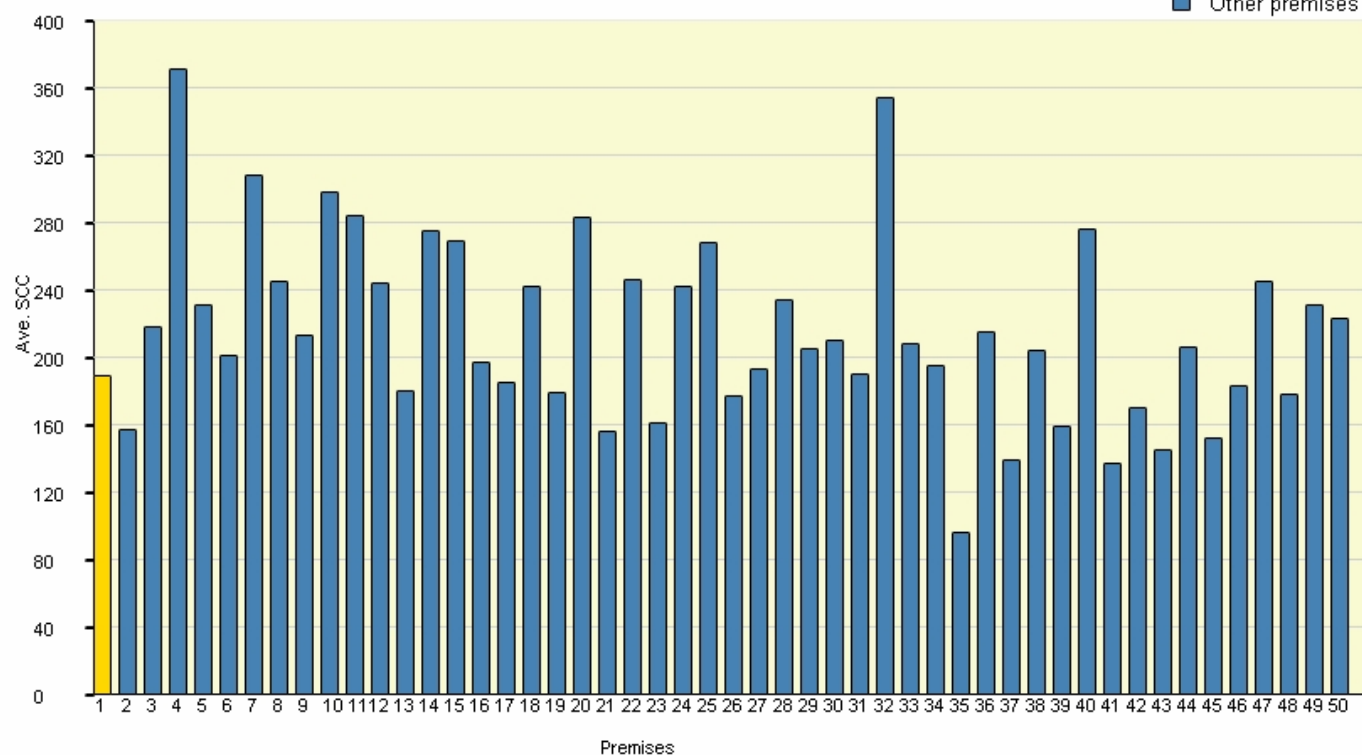
View KPI Details

Graph:

Ave. SCC

Selected premises

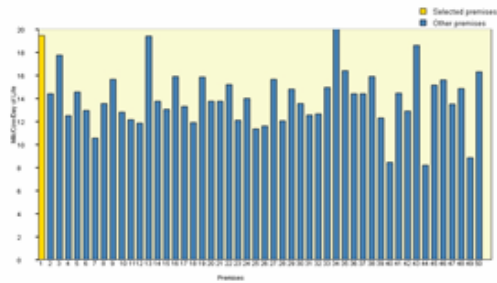
Other premises



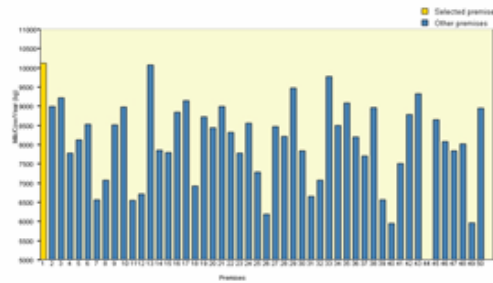
## All KPI's

Graph:

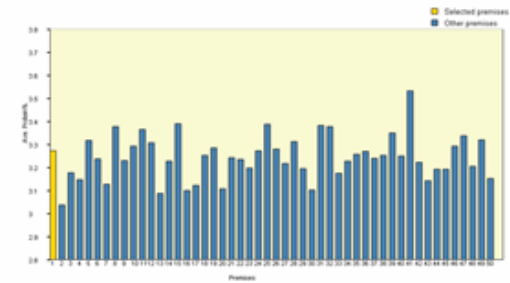
Milk/Cow/Year of life Range 0-20



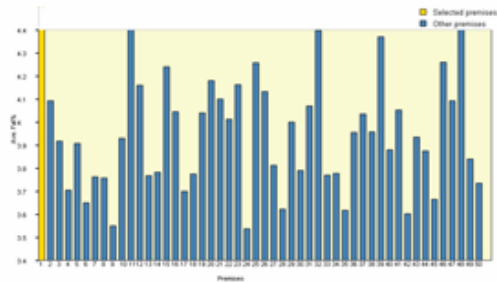
Milk/Cow/Year Range 5000-11000



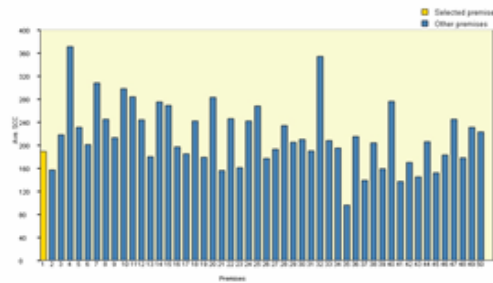
Ave. Prot% Range 2.8-3.8



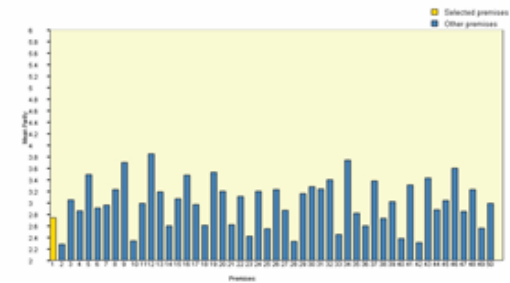
Ave. Fat% Range 3.4-4.4



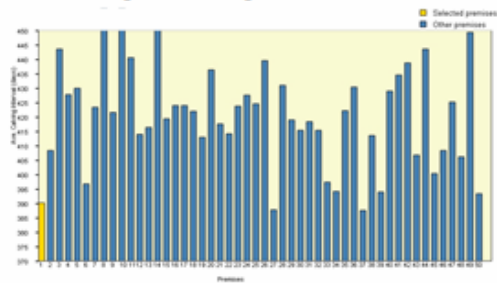
Ave. SCC Range 0-400



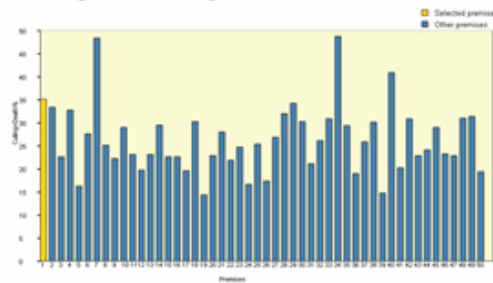
Mean Parity Range 2-6



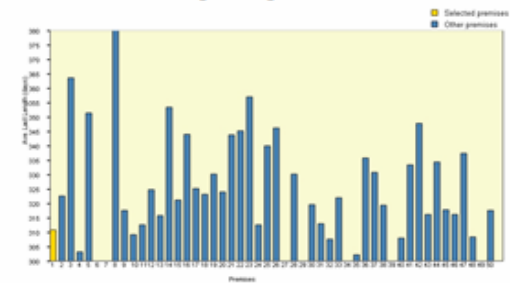
Ave. Calving Interval Range 370-450



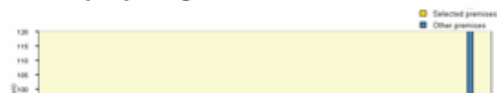
Culling+Death% Range 0-50



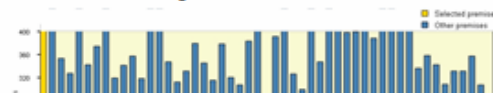
Ave. Lactation Length Range 300-380



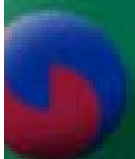
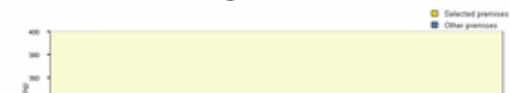
Ave. Dry Days Range 40-120



Ave.No Cows Range 0-400



Protein/Cow/Year Range 200-400





Comparison date: December ▼ 2008 ▼

NMR Herd number: 10-90823-01

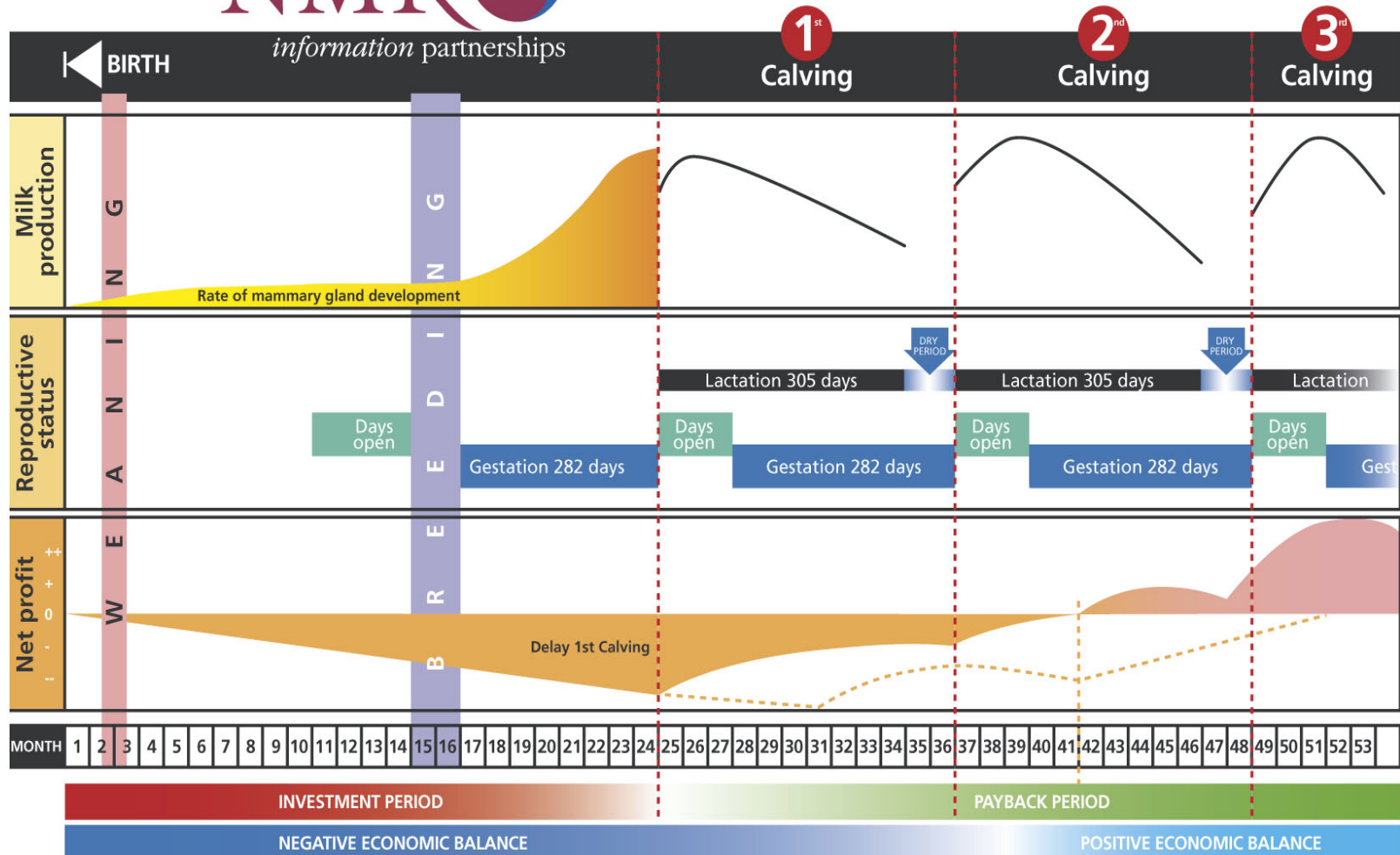
NMR Life Time Yield on December 2009 for herd 10-90823-01 averaged by lactation number.



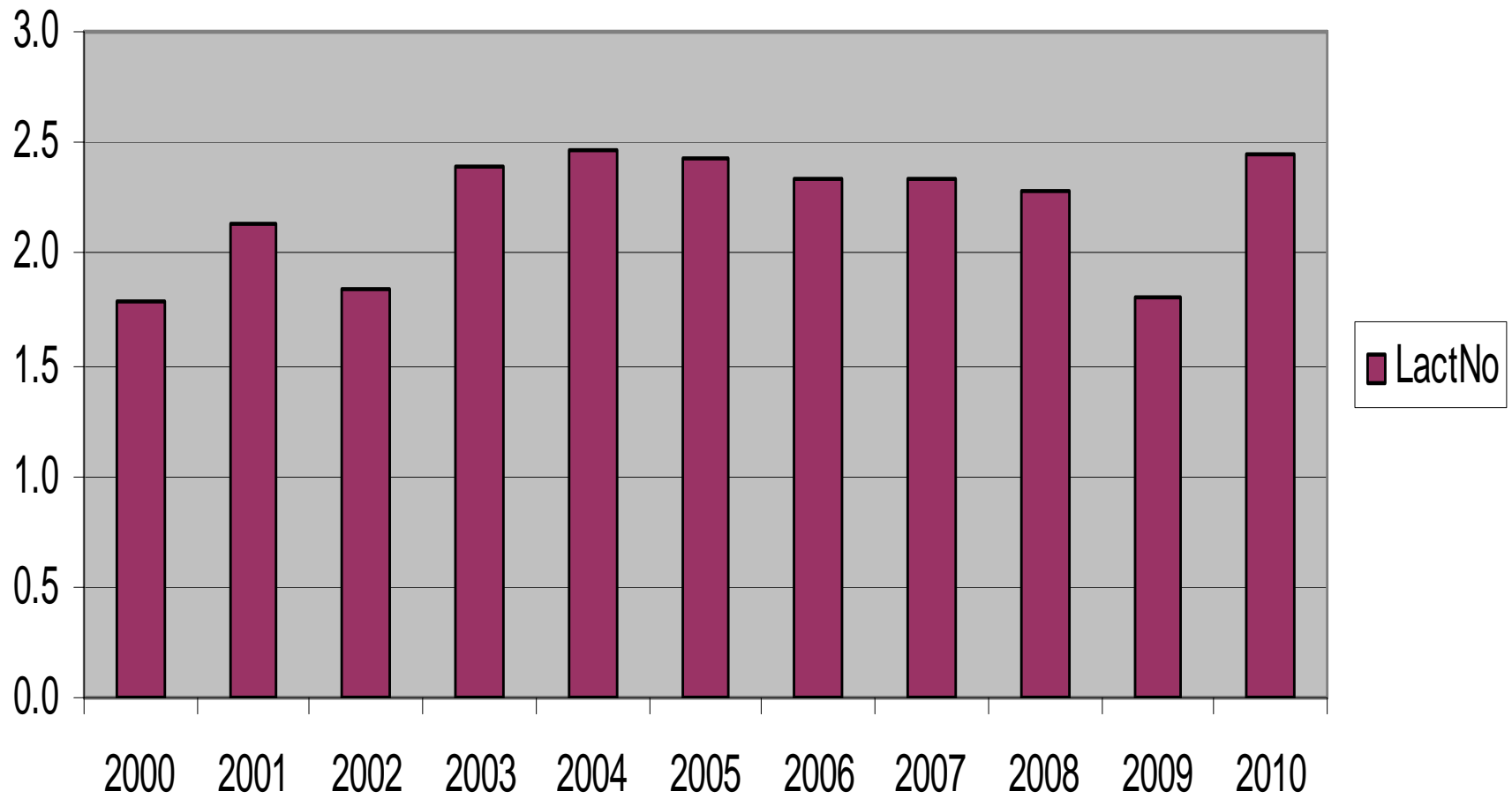
NMR Life Time Yield on December 2008 for herd 10-90823-01 averaged by lactation number.



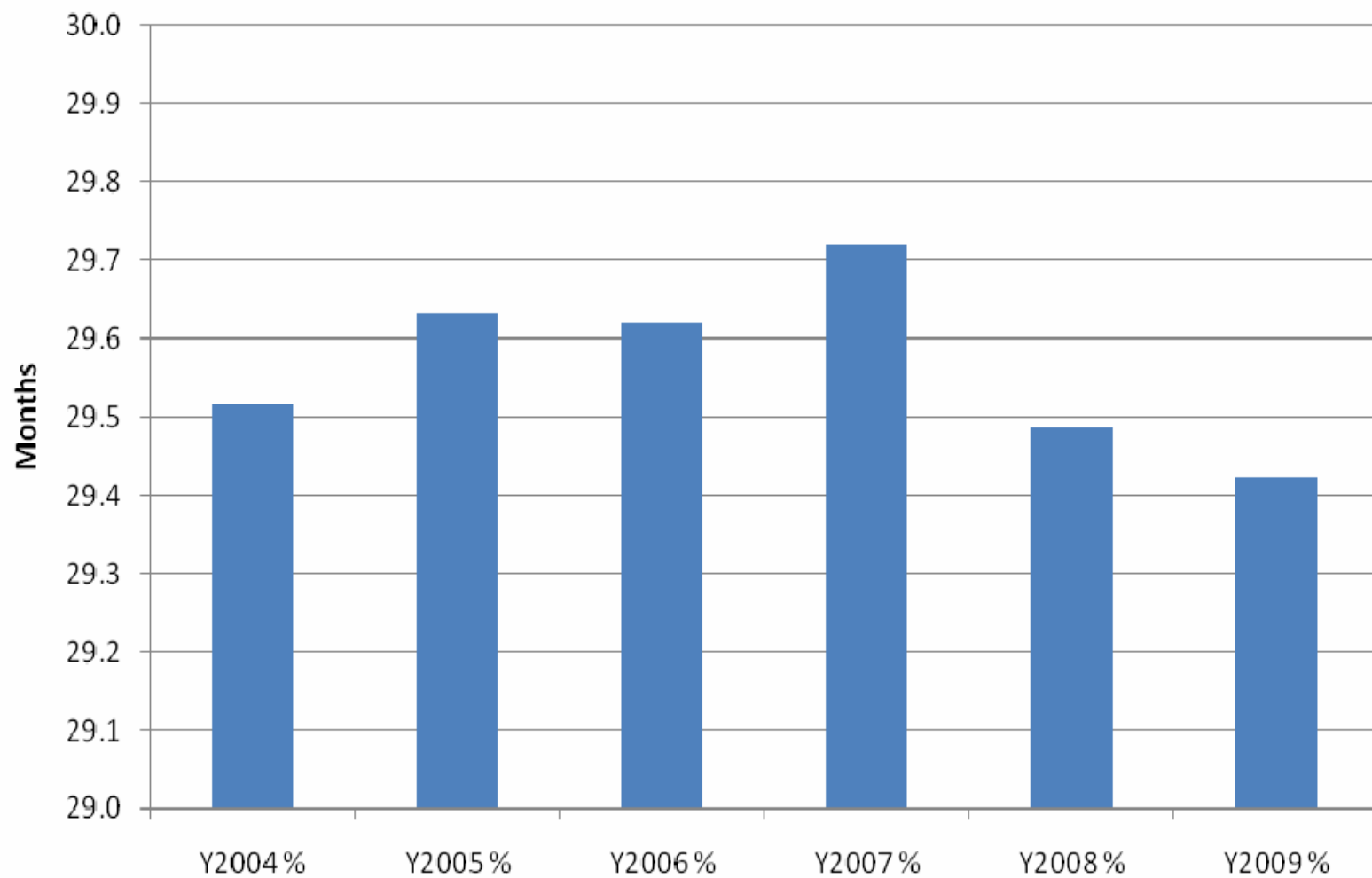
# Lifetime Daily Yield – measuring overall technical performance



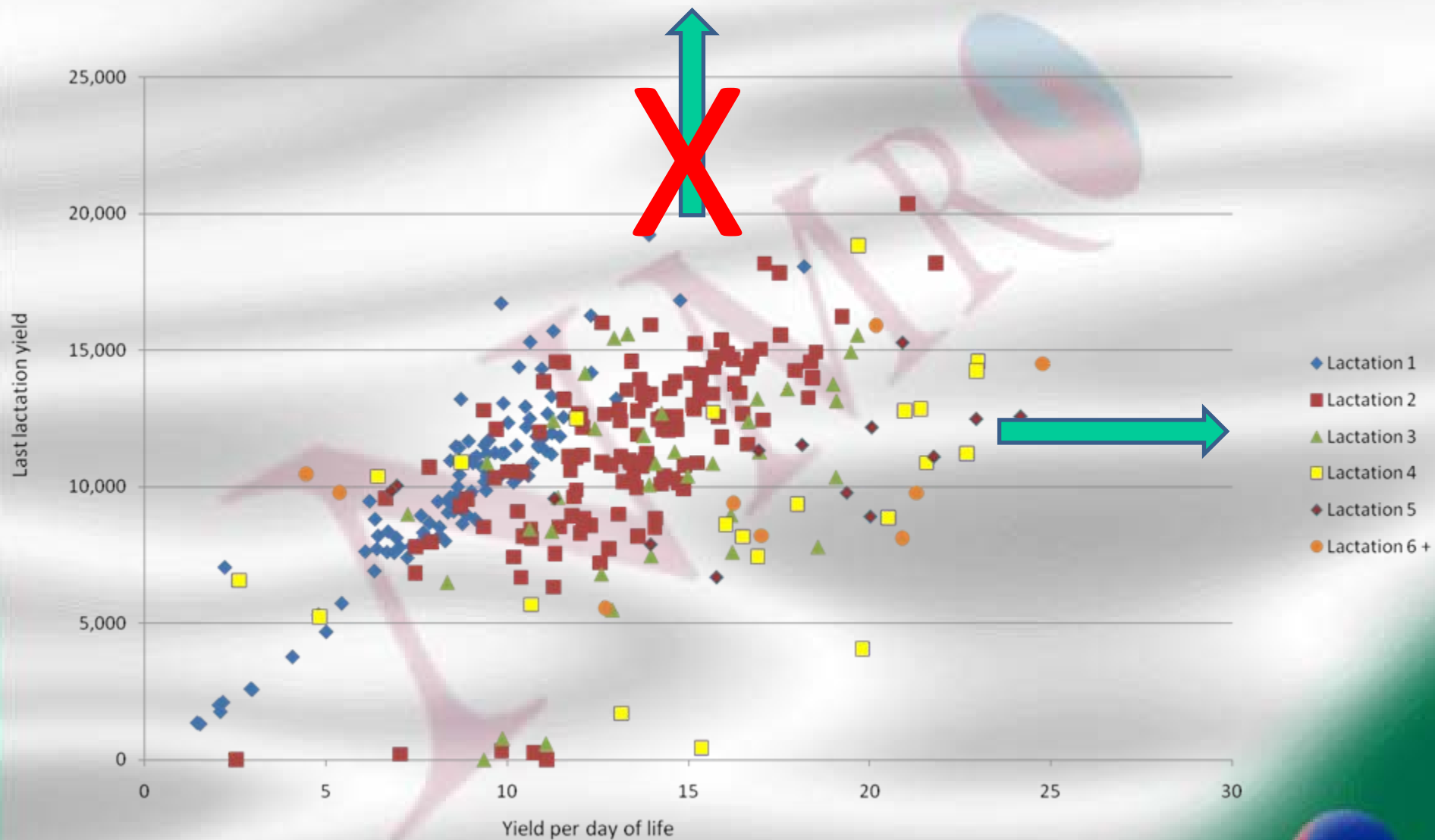
LactNo



## Average Age at 1st Calving



## Information: Identifying true performers through lifetime yield



## **In conclusion**

- **Herd Companion-** the on line management system allowing farmers and farm advisers to view fertility, health, milk quality and disease information in order to improve the management of the dairy cow.

