



International Review of Best Recording Practices/Routines

37th ICAR Session
31st May - 4th June, 2010,
Riga, Latvia

Presented by;
ICAR Sub-Committee on
Recording Devices



Milk Recording in Germany



About DLQ

As the umbrella organisation of organised milk recording organisations in Germany, **Deutscher Verband für Leistungs- und Qualitätsprüfungen e.V. (DLQ)** comprises all milk recording organisations (16) and the data center in Verden.

Certification

DIN EN ISO 9001:2008-12



Akkreditation

DIN EN ISO 17025



Agenda

- General Rules for Milk Recording
- Preparation of Milk Recording
- Testing Procedures
- Data acquisition and data provision in Herd
- Sample Transport
- Sample accepting and analysis
- Processing Data and Inform the Farmer



General Rules for Milk Recording

- ❑ Inform the farmer just before start MR
- ❑ All cows of a herd will be tested (also if sick or in heat)
- ❑ All cows are marked with official eartag
- ❑ Changes of the working procedure, the time of milking and feeding before milk recording are not accepted
- ❑ Any insets of hormones or active agents to promote the milk performance are prohibited
- ❑ The MR is realized evenhanded, conscientious, sanitarily and punctual
- ❑ Farms with two times milking start MR in the evening
- ❑ Farms with three times milking start MR at noontime





Preparation of Milk Recording

- Check if the farmer information of the last MR is completed
- Boxes with vials and if necessary RD (ICAR-approved) have to be ordered in necessary number
- Check for new and left cows as well as calving dates for the time period after the last MR, the data have to be listed
- Status Dry and Colostrums of the respective cows have to be listed
- conservation of needed vials
- Open "MR" in the Herd-PC/Palm (enter date and group order and box number, milking frequency and so on, vial number of the respective cow will automatically given)
- If use Herd-PC: print worksheed (number cow, box, number vial)
- if necessary the mobile RD have to be build in (only annually approved RD) (ICAR-approved)



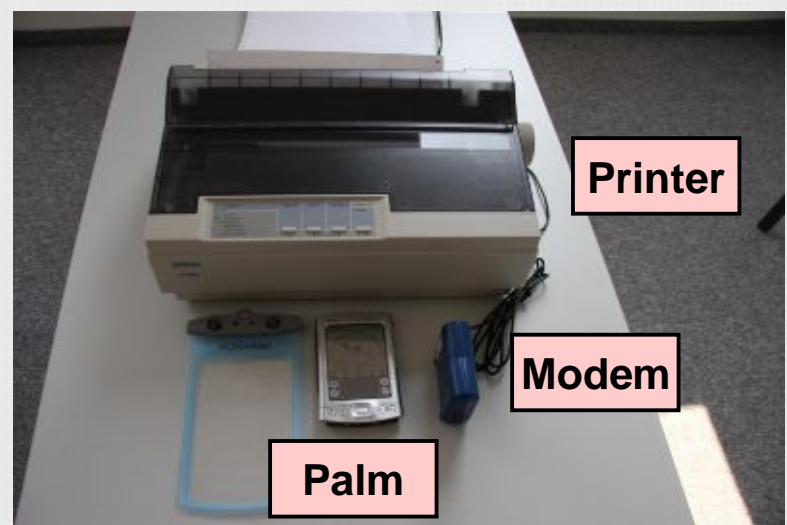
Testing Procedures

- ❑ Identification of the cows ID (automatic Systems or visual)
- ❑ note the milk weight on worksheet or type into Palm (read proper off on display or scale, when mobile RD)
- ❑ Mix the entire milk thoroughly and transfuse it into a measuring beaker
- ❑ samplings have to be done immediately after the mixing with scaled pipette
- ❑ fill the milk sample into the correct vial, close and shake the bottle, to have a good conservation
- ❑ each cow has one bottle in which the samples of all the milkings (two or three) are collected
- ❑ empty measuring beaker after each milking
- ❑ After milking clean equipment



Data acquisition and data provision in Herd

- Validity check, whether all of the data are listed (Herd-PC and Palm)
- Fill in accompanying documents (farm, date, technician, box number)
- transfer the MR-Data via dial-up, mail-box, email or electronic volume to the Milkrecording Organisation (MRO)



Sample Transport

- Provision of the samples and documents in the farm or in collecting points and transport with reefer
- Collection of the samples through own courier service according to schedule



Sample accepting and analysis

- Incoming inspection
 - (farm, box number, sample number, conservation, fill level, completeness of the documents)
- Analysis: fat, protein, lactose, somatic cell, urea





Processing Data and Inform the Farmer

- ❑ Merging: cow number and milk weight with ingredients of milk (milk composition)
- ❑ Performance Calculation (day of MR, milking average, herd average, sliding annual performance, 100-days-performance, 305-days-performance, annual performance, 305-daily output, life-performance, and so on)
- ❑ Data storage

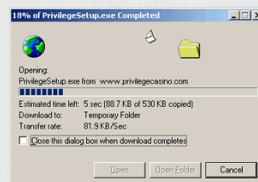
Inform the Farmer

- ❑ The MRO and the Data Center inform the farmer via:

Internet

Fax

Mail





Thank you for your attention!

Certification

DIN EN ISO 9001:2008-12



Akkreditation

DIN EN ISO 17025