

# Using extension to progress genetic improvement on Irish dairy farms

George Ramsbottom  
Teagasc

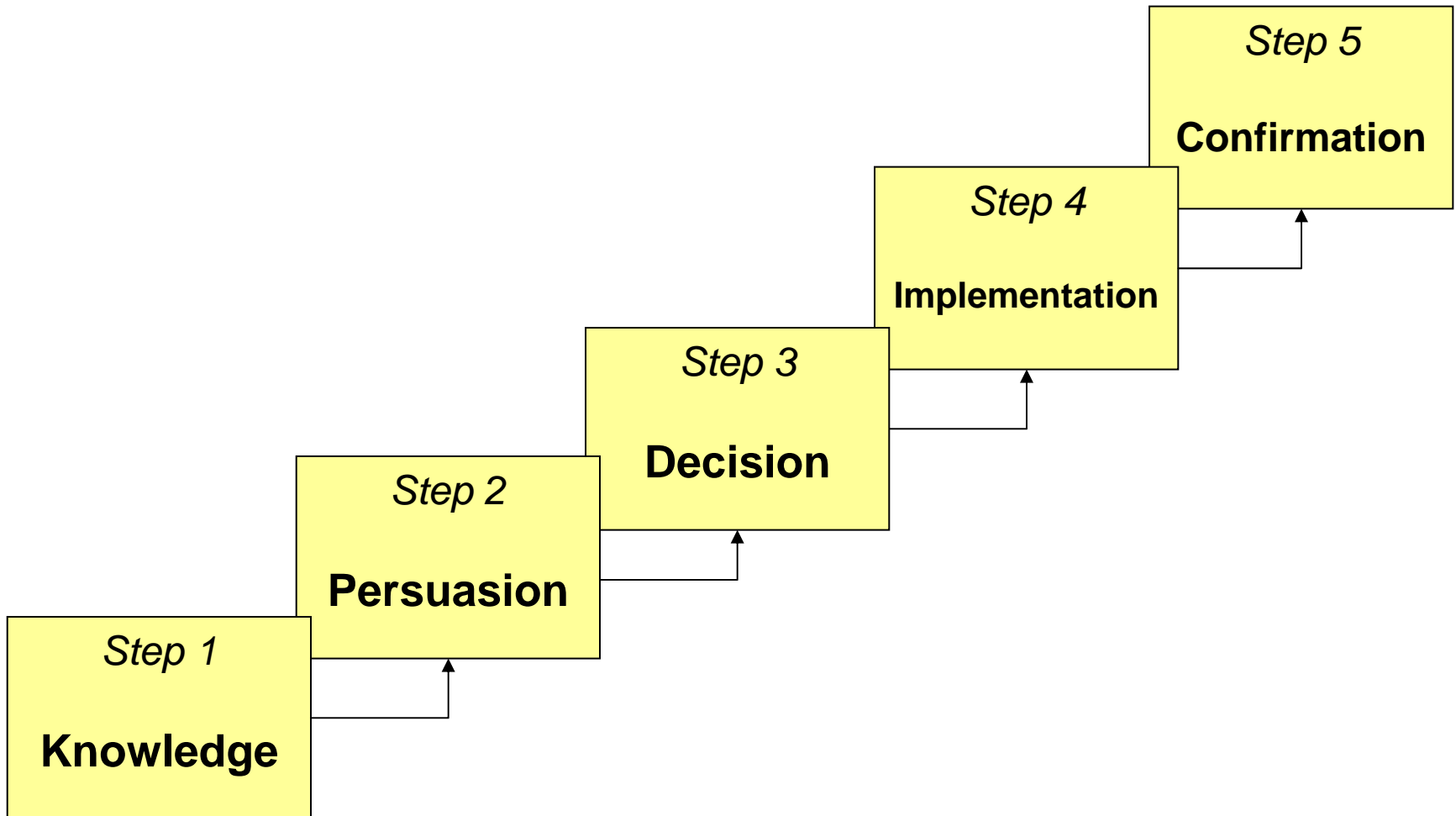
# Introduction

- Background
- Applying extension to EBI adoption
- Results

# Trends in milk production and replacement rate on farm net profit for 14 spring-calving dairy herds

Year	Milk		Replacement		Profit (€ ,000's)
	Yield (kg)	Sales (€ ,000's)	Rate (%)	Cost (€ ,000's)	
1990	5,033	126	16%	21	29
1993	5,307	136	21%	28	30
1997	5,629	145	25%	34	32
2000	5,609	148	26%	35	33
2003	5,638	150	27%	37	33
<b>Change</b>	<b>605</b>	<b>24</b>	<b>11%</b>	<b>16</b>	<b>4</b>

# The 5 step adoption process



# Step 1 - Knowledge





# Step 2 - Persuasion



Step 1 - Knowledge



Step 2 - Persuasion



# Step 3 - Decision



## Step 1 - Knowledge



## Step 2 - Persuasion



## Step 3 - Decision



# Step 4 - Implementation





## Step 1 - Knowledge



## Step 2 - Persuasion



## Step 3 - Decision



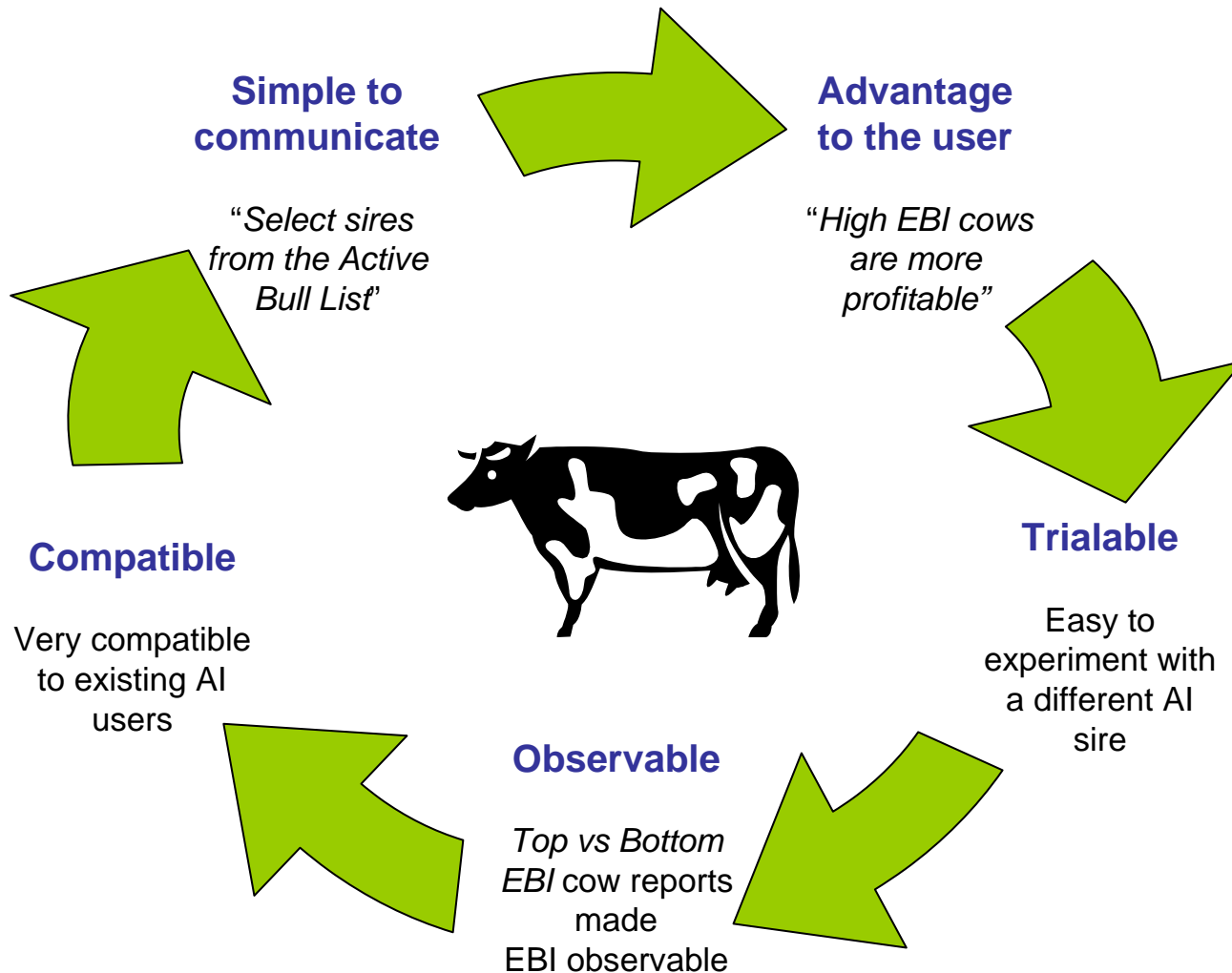
## Step 4 - Implementation



# Step 5 - Confirmation



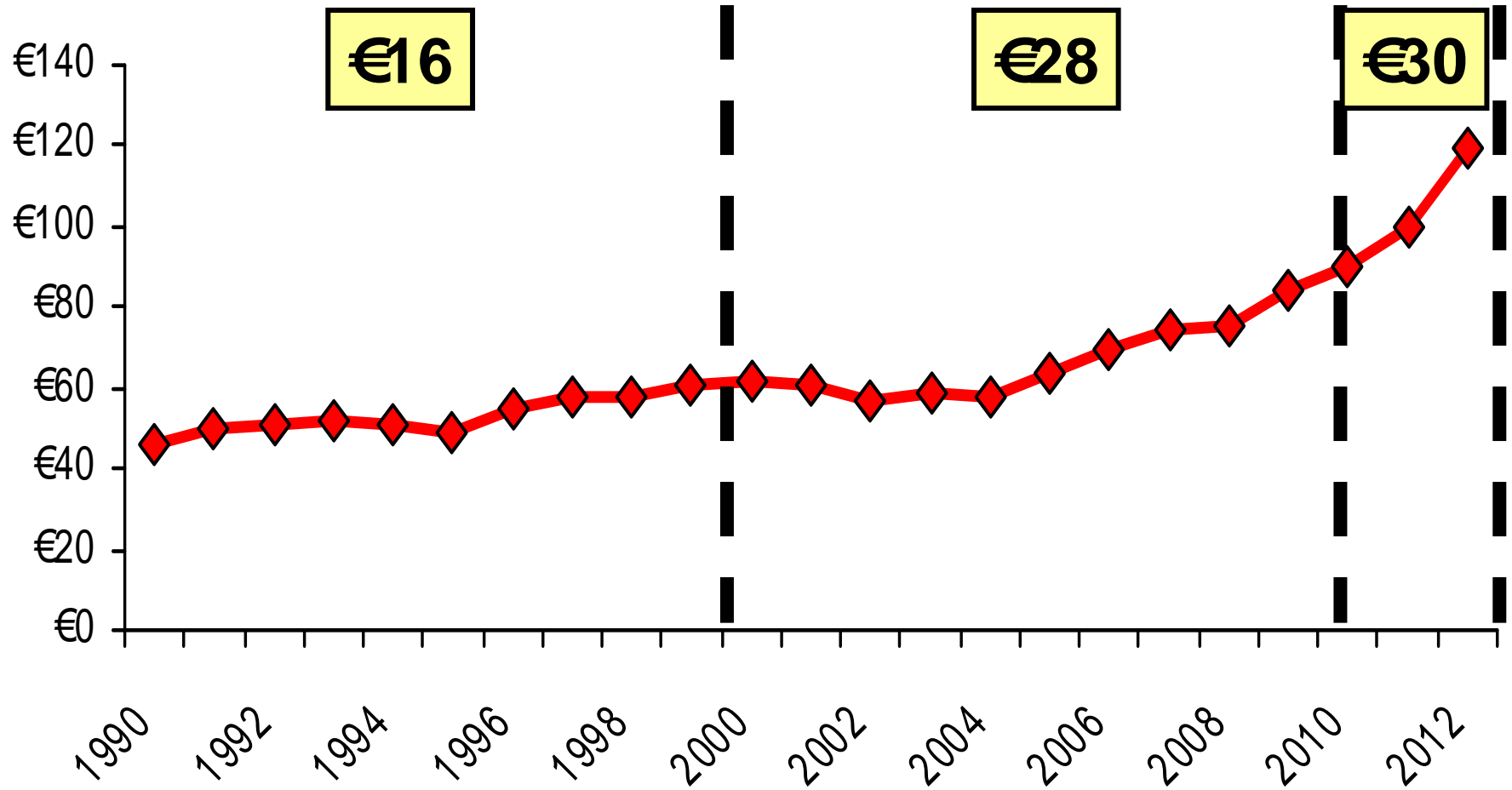
# Intrinsic factors that made EBI adoption easier



# Innovation drove further improvement

	2009	2010	2011
<b>Genomic AI sires</b>			
EBI (€)	€179	€211	€218
% of total AI used	34%	40%	47%
<b>Daughter proven sires</b>			
EBI (€)	€126	€151	€148
% of total AI used	66%	60%	53%
<b>Weighted EBI of all AI sires used</b>	<b>€144</b>	<b>€175</b>	<b>€181</b>

# EBI of replacement heifer calves by year of birth



# Genetic change in Milk and Fertility by year of birth

