

Tru-Test EMM Implementation

Paul Jandrin
AgSource DHI Service Representative

© 2008 CRI



Data Handler

- Mechanical Meters
 - Milk weights, samples and pen no.
 - Samples and pen no.

- RFID Reader
 - Bluetooth Compatible

- Electronic Milk Meters

© 2008 CRI



EMMs and Data Handler

- Radio Frequency
 - Meter Id and Position
 - Milk Weight and Sample Number
 - Pen Number and CAR Codes
 - Verifies Duplicates and New Cows
 - Time and Length of Milking
 - Flow Rate
 - Wash Cycle



© 2008 CRI

During Milking

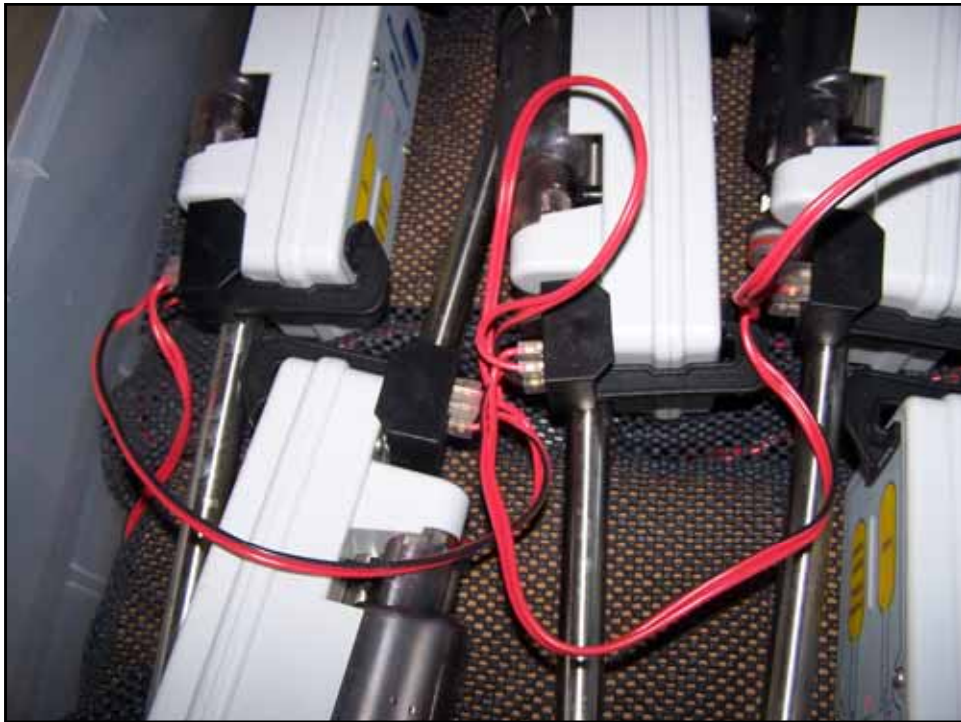
- Cow Numbers
 - Per Side
 - Per Stall
 - One at a Time
- Cow Information
 - Recorded Automatically
 - Can Enter CAR Codes
- Bar Coded Vials
 - Any Order in the Tray

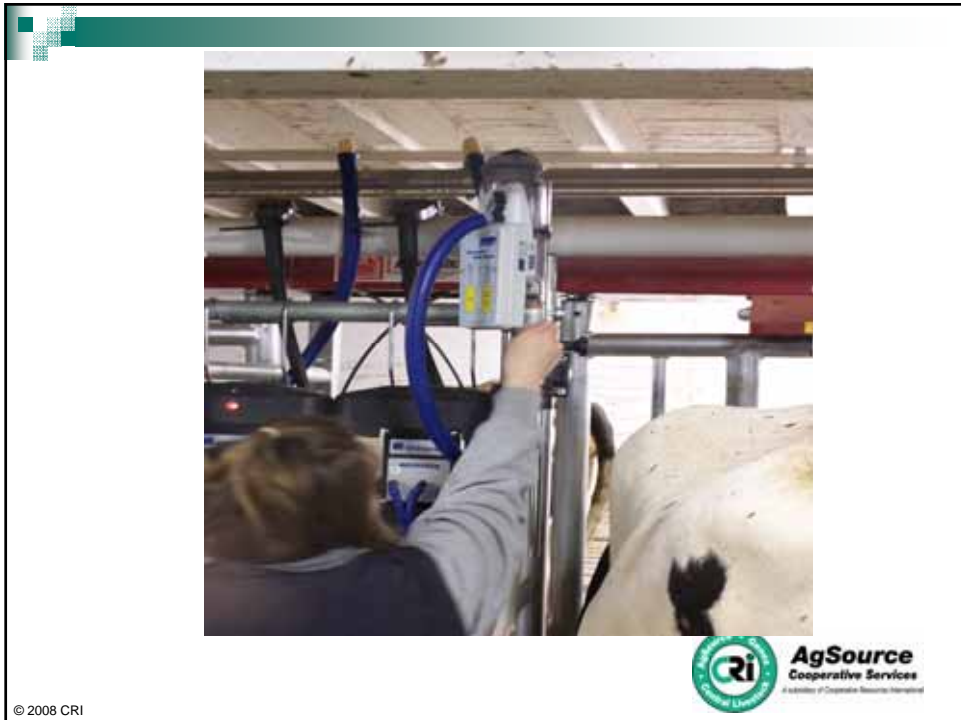


© 2008 CRI









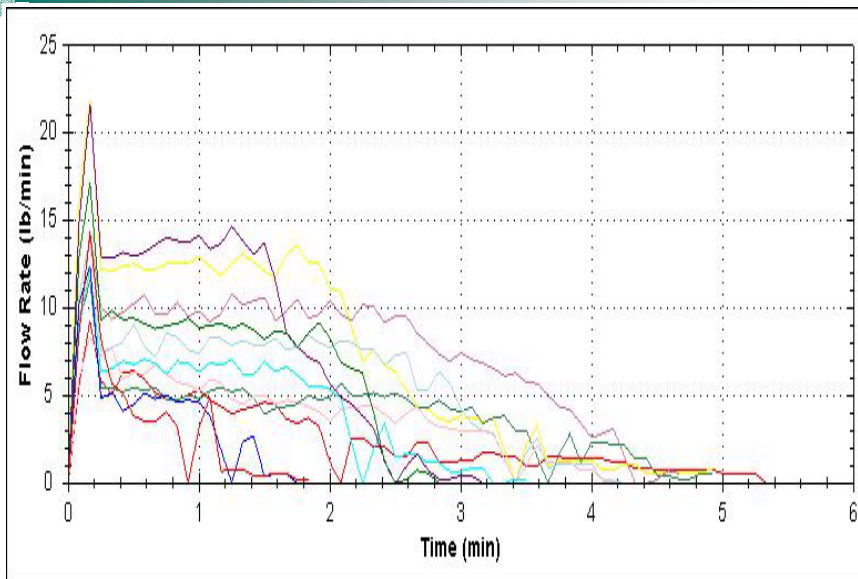




© 2008 CRI



AgSource
Cooperative Services
A Division of Cooperative Resources International



© 2008 CRI

Summer 2005

- Trial Program with Tru-Test
 - Get meters established in US
 - Develop software
 - Dairy One, Dairy Comp, DRPCs

- Performance and Durability
 - Different types of dairies
 - Transportation



© 2008 CRI

Purchase of Meters

- Repayment
 - Gain Herds
 - Save Labor – sometimes intangible amount
 - Largest Herd – 2x44 Parallel Parlor
 - Smallest Herd – 100 Cow Tie Stall Barn

- 2006 – 50 Meters and 20 Data Handlers
- 2007 – 25 Meters
- 2008 – 100 Meters



© 2008 CRI

Questions?



© 2008 CRI