



# ICAR Subcommittee for Recording Devices



## Activities Update: May 2014



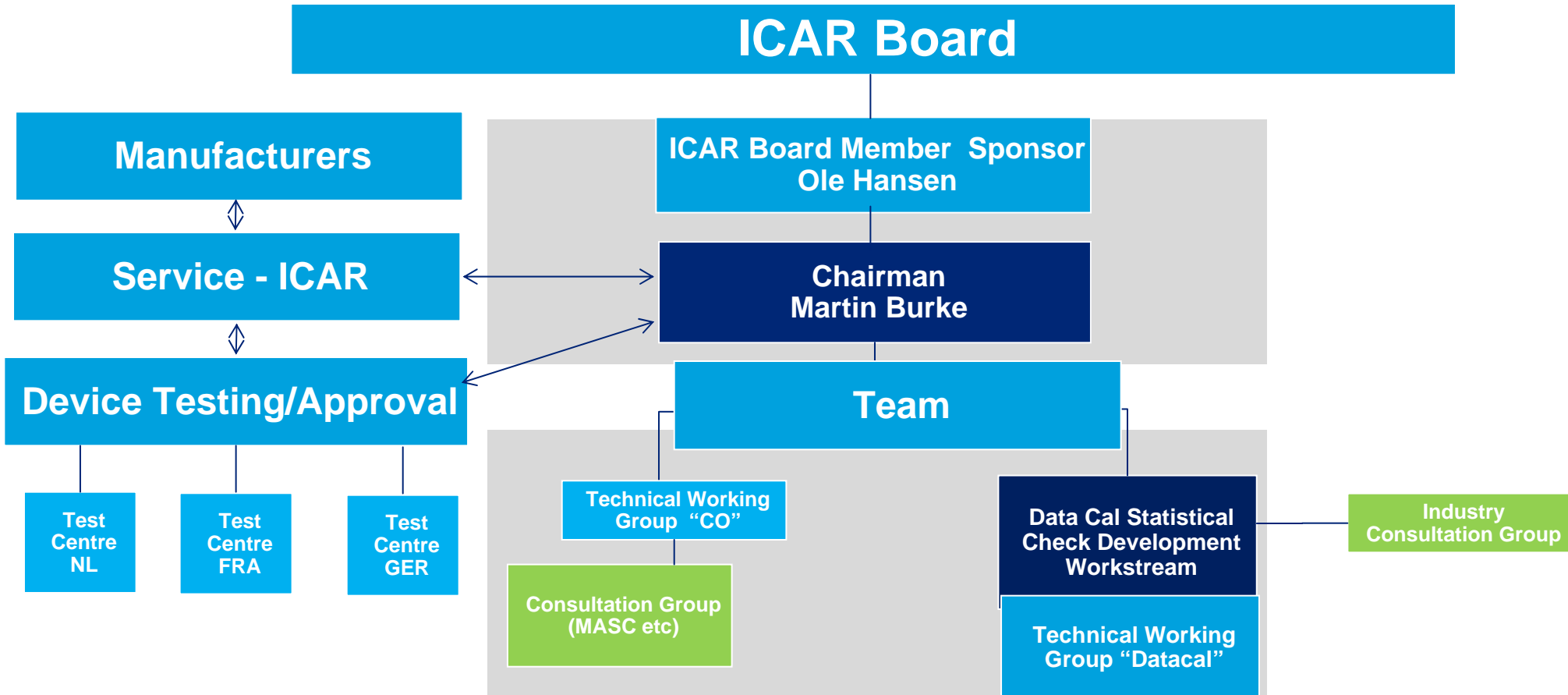


# Recording Devices Team

---

- Martin Burke, Ireland, ICAR Milk Rec. SC (Chair)
- Clement Allain, France, Institut de l'Élevage, FRA Test Centre
- Richard Cantin, CanWest, Canada
- Andrew Fear, LIC, NZ
- Kees De Koning, Netherlands ICAR Test Centre
- Peter Huijsmans, KOM, Netherlands
- Sandra Rose, Germany ICAR Test Centre
- Steven Sievert, DHIA/QSC, USA
- Manfred Hammel, Landeskontrollverband Brandenburg, Ger.
- Pascal Savary, Tänikon ART, Switzerland

# Recording Devices SC Overview Structure/Governance





## Devices approved 2013/14:

- ✓ Modified test procedure : MM25 and MM27 milk meter calibration module in ALPRO 7.2
  - ✓ Modified approval test for the DeLaval MU486
  - ✓ ICAR approval test of the Ori-Collector sampling device from SAYCA Automatizacion in combinationm with DeLaval VMS 2007 and VMS 2013
  - ✓ ICAR approval test of the Ori-Collector sampling device from SAYCA Automatizacion in combinationm with Lely A3 and A4 Milking Robot
  - ✓ Two products ICAR tested and failed (confidential)
  - ✓ Further two are ongoing, with results due summer 2014
-



## Data Cal Project:

Updated the ICAR guidelines to provide standardised statistical models for validating accuracy of electronic meters (using continuous data from those meters) ;

- Replaces Routine annual water check
  - In 2014 also first time saw it replace Installation check
-



# Carry Over project 2014/15 Objectives

---



## What ?

ICAR Test Centres (FRA, NL & GER) adopt the “Lovendahl” CO test from Summer 2014 , finalise protocol, instal & train up test centres

For next 9-12 months perform CO test as part of any new/modified product submittals - for information only – to be shared with manufacturers and the SC members.

Provided results are to plan, then update the ICAR guidelines in Poland 2015, to provide standardised method for measuring carry over.

## Why ?

C-O compromises sample integrity/quality and can make the test results of the milk recorded sample invalid (false positives/negatives for health test applications).

---