



Introducing the **IDEXX RealPCR MiIQ-ID** platform – a complete solution for mastitis diagnostics

Vanessa Harjunen

Agenda

- Meet the Presenter
- Mastitis Testing
- IDEXX RealPCR MiIQ-ID Platform Explained
- Benefits of IDEXX RealPCR MiIQ-ID
- Q&A

About myself and my affiliation with IDEXX

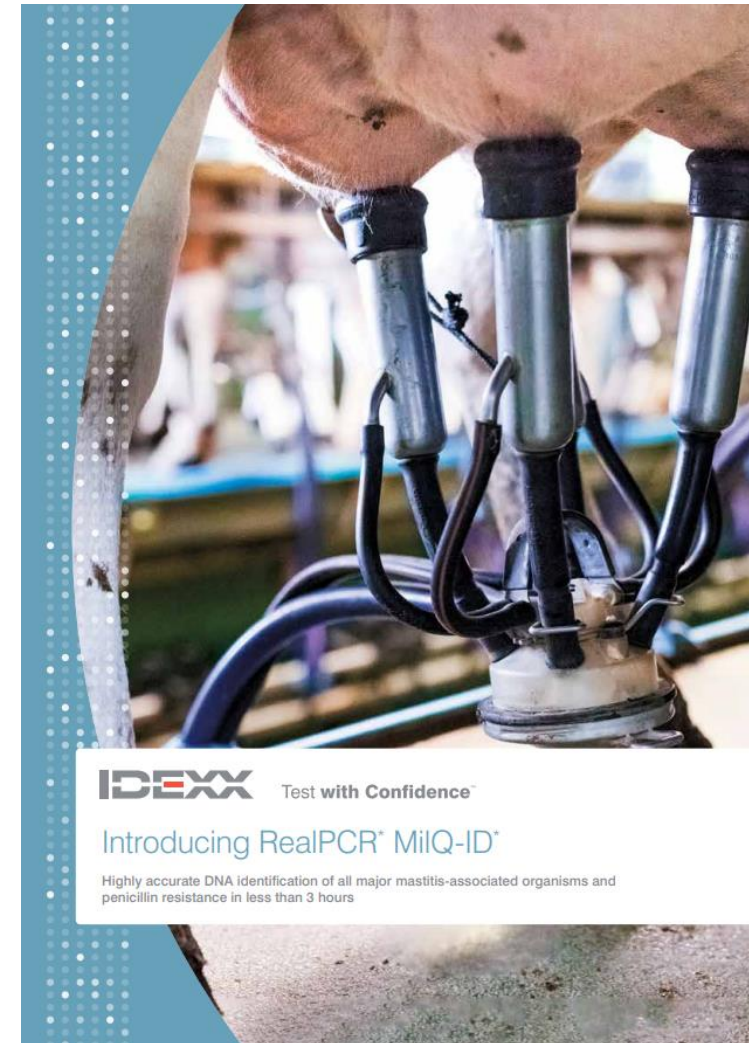


- ✓ PCR consulting
- ✓ Knowledge and practical experience in PCR
- ✓ Ensures you make the most out of IDEXX PCR technology

Vanessa Harjunen, PhD
PCR Specialist, EMEA Region



IDEXX RealPCR MiQ-ID platform



IDEXX RealPCR MiQ-ID platform



Extraction
RealPCR* MiQ-ID Magnetic Bead Kit



Amplification
RealPCR* MiQ-ID DNA System



Software
RealPCR Connect*

IDEXX RealPCR MiQ-ID platform



Extraction
RealPCR* MiQ-ID Magnetic Bead Kit



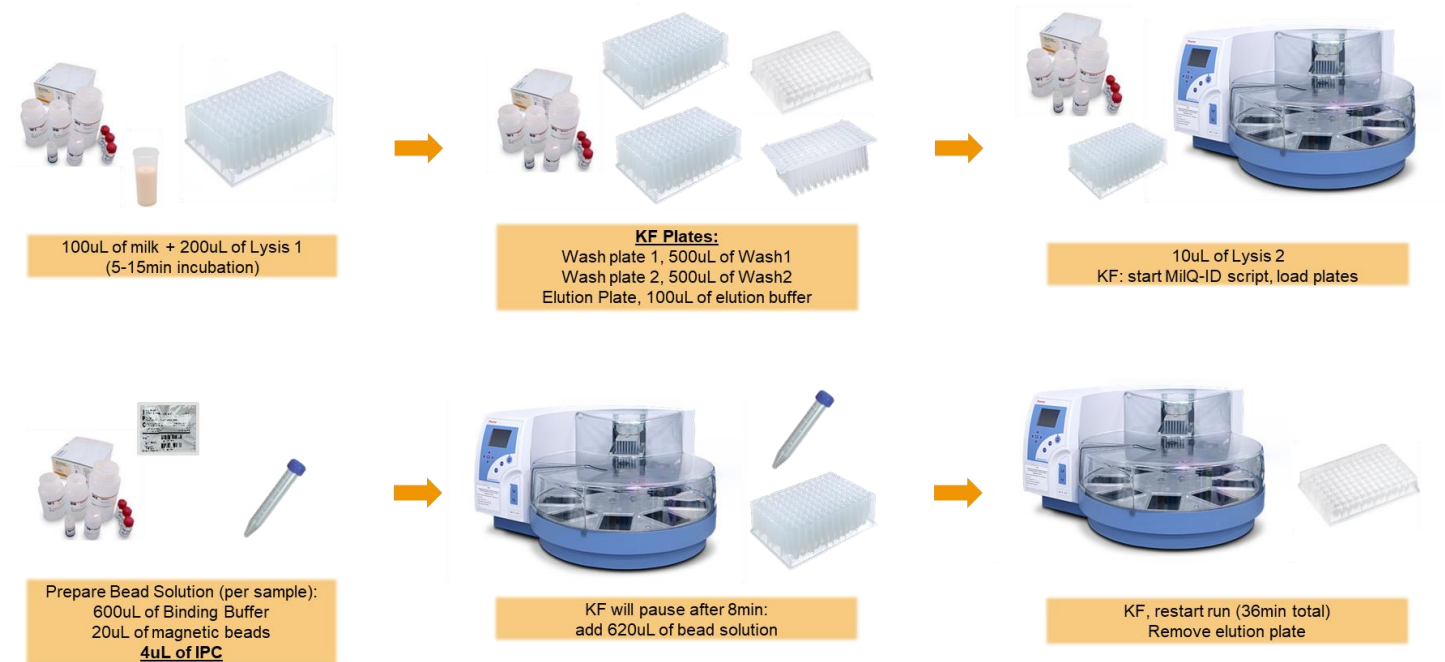
Amplification
RealPCR* MiQ-ID DNA System



Software
RealPCR Connect*

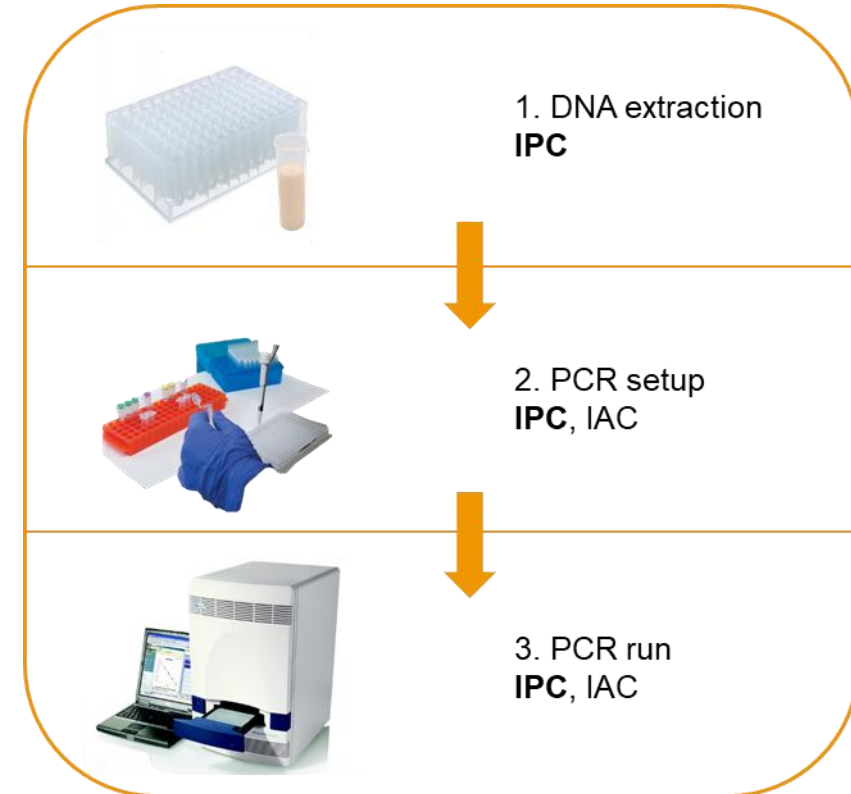
IDEXX RealPCR MiQ-ID platform , Extraction

- Fresh, preserved, or frozen milk samples
- Magnetic Beads
- Automated, KingFisher Flex/Duo
- Ease of use
- Speed, around 1h
- Controlled, IPC



IDEXX RealPCR MiQ-ID platform , Extraction

- Magnetic Beads
- Automated, KingFisher Flex/Duo
- Ease of use
- Speed, around 1h
- Controlled, IPC



Without internal control is impossible to say if the sample was truly negative or if something went wrong in the test

IDEXX RealPCR MiQ-ID platform



Extraction
RealPCR[®] MiQ-ID Magnetic Bead Kit



Amplification
RealPCR[®] MiQ-ID DNA System



Software
RealPCR Connect[®]

IDEXX RealPCR MiQ-ID platform, amplification

RealPCR MiQ-ID Target Mix 1

- *Staphylococcus aureus*
- *Streptococcus agalactiae*
- *Mycoplasma bovis*
- *Streptococcus uberis*

RealPCR MiQ-ID Target Mix 2

- *Staphylococcus species*
- *Streptococcus dysgalactiae*
- *E. coli* and related *Shigella spp.*
- Gram positive β -lactamase gene

RealPCR MiQ-ID Target Mix 3

- *Enterococcus species*
- *Klebsiella species*
- *Trueperella pyogenes*
- *Prototheca species*

RealPCR MiQ-ID Target Mix 4

- *Mycoplasma species*
- *Pseudomonas aeruginosa*
- *Corynebacterium bovis*
- Yeast

● Contagious

● Predominantly environmental

● Environmental or contagious

● Environmental

IDEXX RealPCR MiQ-ID platform, amplification

- 16 targets, 4 separate mixes
- Individual reagents
- Speed, around 1h
- Compatible, QS5 and ABI7500
- Flexibility, PCR setup



RealPCR* MiQ-ID Cycling Program

	Temperature	Time	Cycles
Denaturation	95°C	1 min.	1
Amplification**	95°C	15 sec.	45
	60°C	30 sec.	

RealPCR MiQ-ID Target Mix 1

- *Staphylococcus aureus*
- *Streptococcus agalactiae*
- *Mycoplasma bovis*
- *Streptococcus uberis*

RealPCR MiQ-ID Target Mix 2

- *Staphylococcus species*
- *Streptococcus dysgalactiae*
- *E. coli* and related *Shigella spp.*
- Gram positive β -lactamase gene

RealPCR MiQ-ID Target Mix 3

- *Enterococcus species*
- *Klebsiella species*
- *Trueperella pyogenes*
- *Prototheca species*

RealPCR MiQ-ID Target Mix 4

- *Mycoplasma species*
- *Pseudomonas aeruginosa*
- *Corynebacterium bovis*
- Yeast

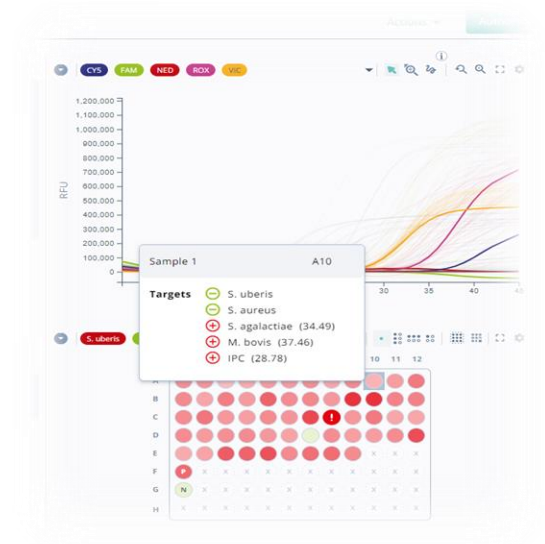
IDEXX RealPCR MiQ-ID platform



Extraction
RealPCR[®] MiQ-ID Magnetic Bead Kit



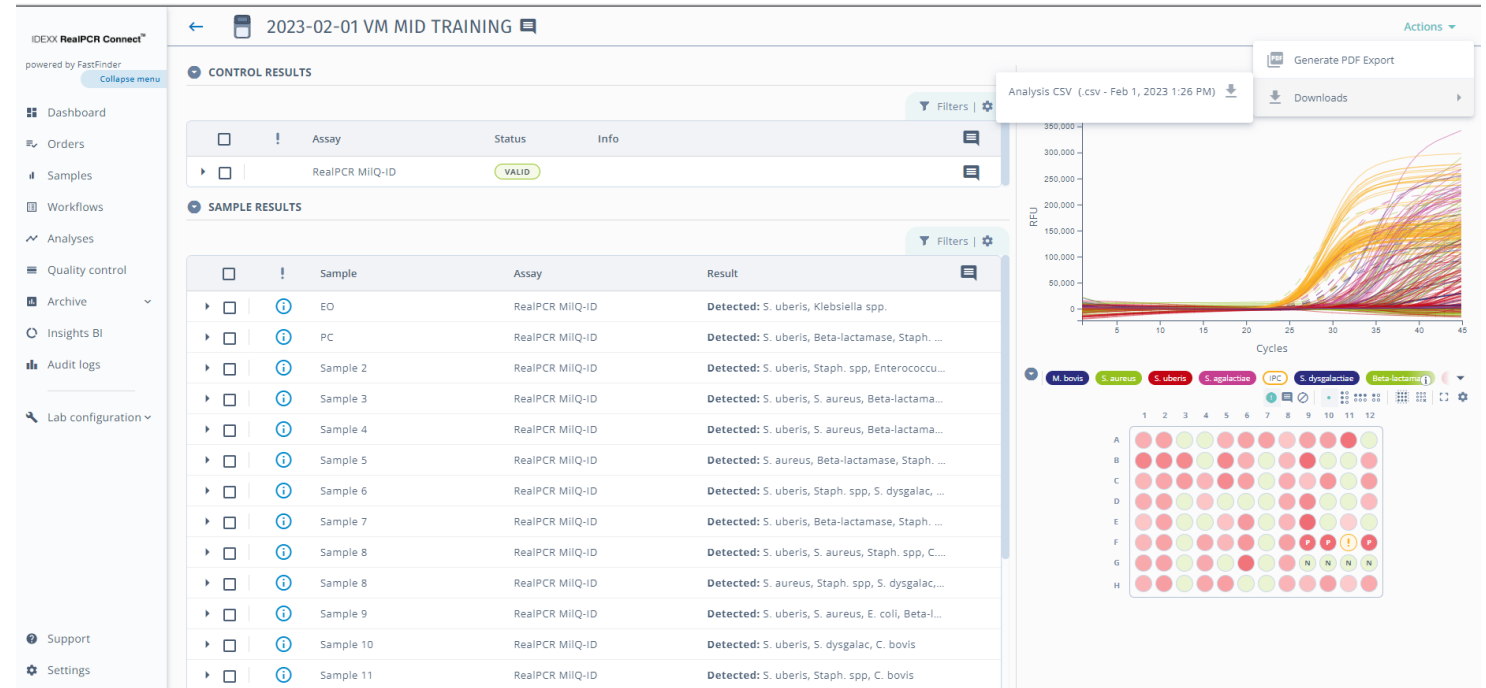
Amplification
RealPCR[®] MiQ-ID DNA System



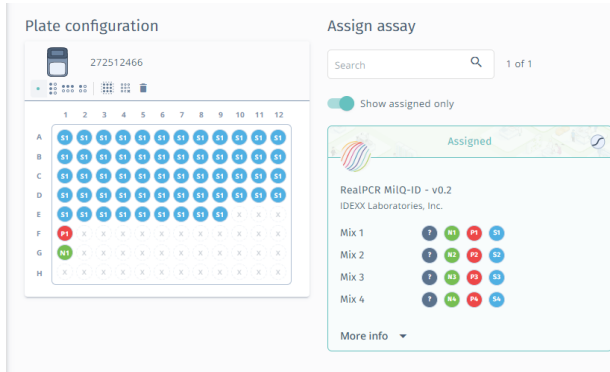
Software
RealPCR Connect*

IDEXX RealPCR MiIQ-ID platform, software

- Cloud-based
- Available on any device
- Automatically analyzes curves
- Securely stores data
- Semi-quantitative, strong/regular/weak



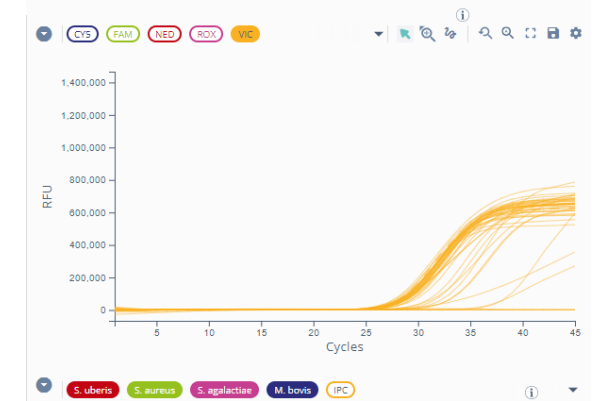
IDEXX RealPCR MiQ-ID platform, software



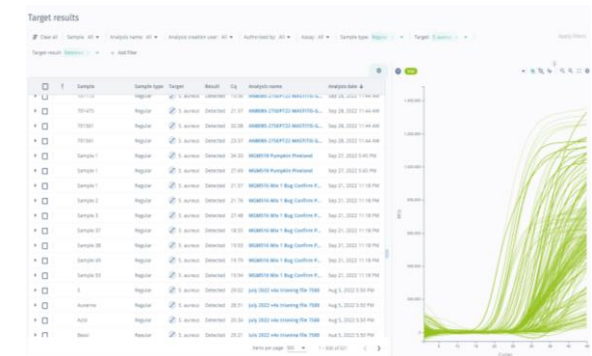
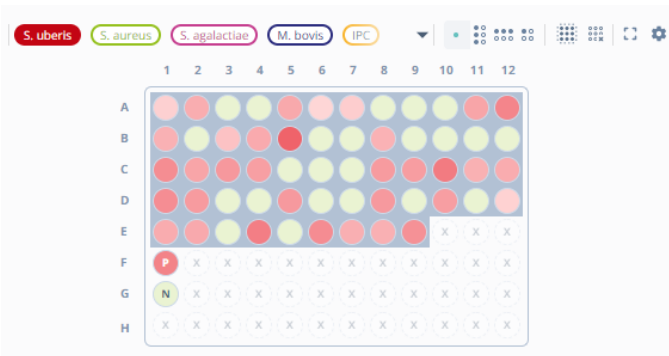
Flexible configuration

	1-PC	1-NC
	VALID	VALID
<i>S. uberis</i>	⊕ Detected	⊖ Not detected
<i>S. aureus</i>	⊕ Detected	⊖ Not detected
<i>S. agalactiae</i>	⊕ Detected	⊖ Not detected
<i>M. bovis</i>	⊕ Detected	⊖ Not detected
Quality control	Valid	-

Assay control validity



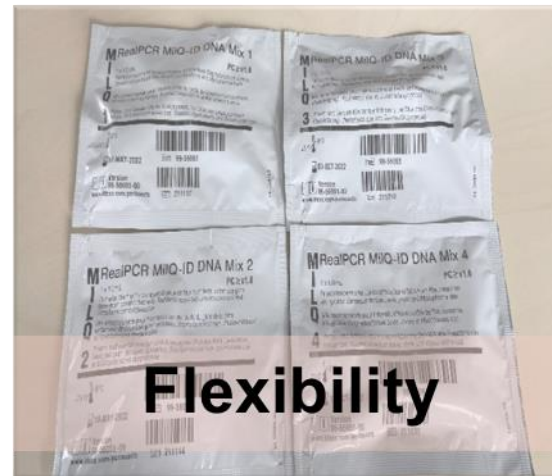
Results by target



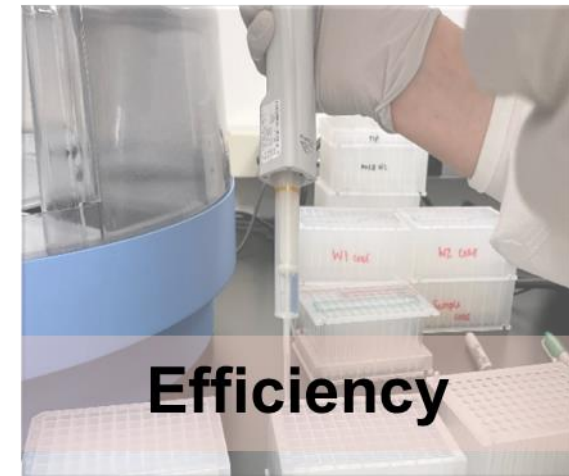
IDEXX RealPCR MiQ-ID platform, Customer Value



Testing with confidence,
accuracy in the lab



Relevant testing and
optimization of resources



Streamlined workflow, higher
sample capacity

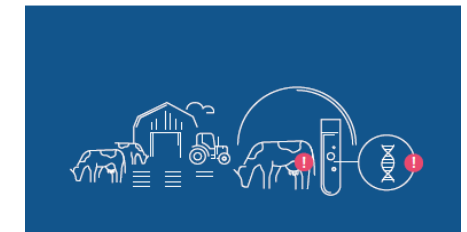
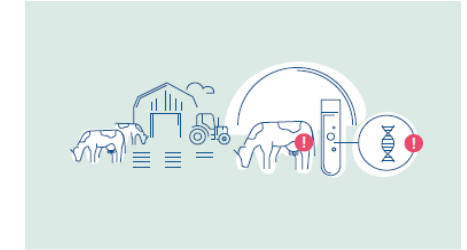
MilQ-ID, ongoing training and support



2* What are the testing methods **currently used** on farm that are run by you, your vet or a laboratory for mastitis detection? *
(more than one answer is possible)

Choose as many as you like

- A California Mastitis test
- B Lab based SCC
- C Lab based culturing
- D On-farm SCC
- E On-farm culturing
- F Lab based PCR test



IDEXX, a partner to drive demand



Introducing the **IDEXX RealPCR MiIQ-ID** platform – a complete solution for mastitis diagnostics

Vanessa Harjunen