

Manufacturer showcase ICAR 2023



***“From labdata to  
farm KPI’s”***

Milk Test Manager [MTM]





## Introduction

- Durk Haringsma
- Born and raised on a dairy farm
- Dairy farming at van Hall Larenstein
- Started at UNIFORM Agri in 2008
- Project manager



# UNIFORM Agri

Herd management software for dairy farmers

Established in 1986

> 90 people (13 Nationalities)

10 national teams  
(sales & aftersales)

>17,000 active users

Since 2013 part of the  
DeLaval Holding

The head office located in Assen, The Netherlands

Sales  
Aftersales  
Backoffice  
Development  
Product Management



# UNIFORM Agri

as a system  
integrator



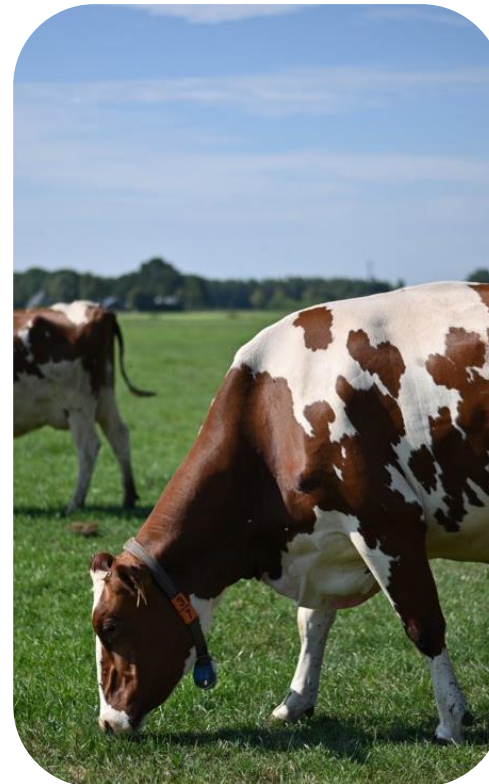
## Farmers

UNIFORM program

- On farm automation
- National interfaces

## Consultants

Uniform  
consultant  
version



## 3rd party solutions

- Conception
- M84U
- 4Milk
- MTM

# MilkTestManager

Milk Test Manager [MTM] is a software solution for milk test organizations

*that*

processes and combines data from different sources

*to*

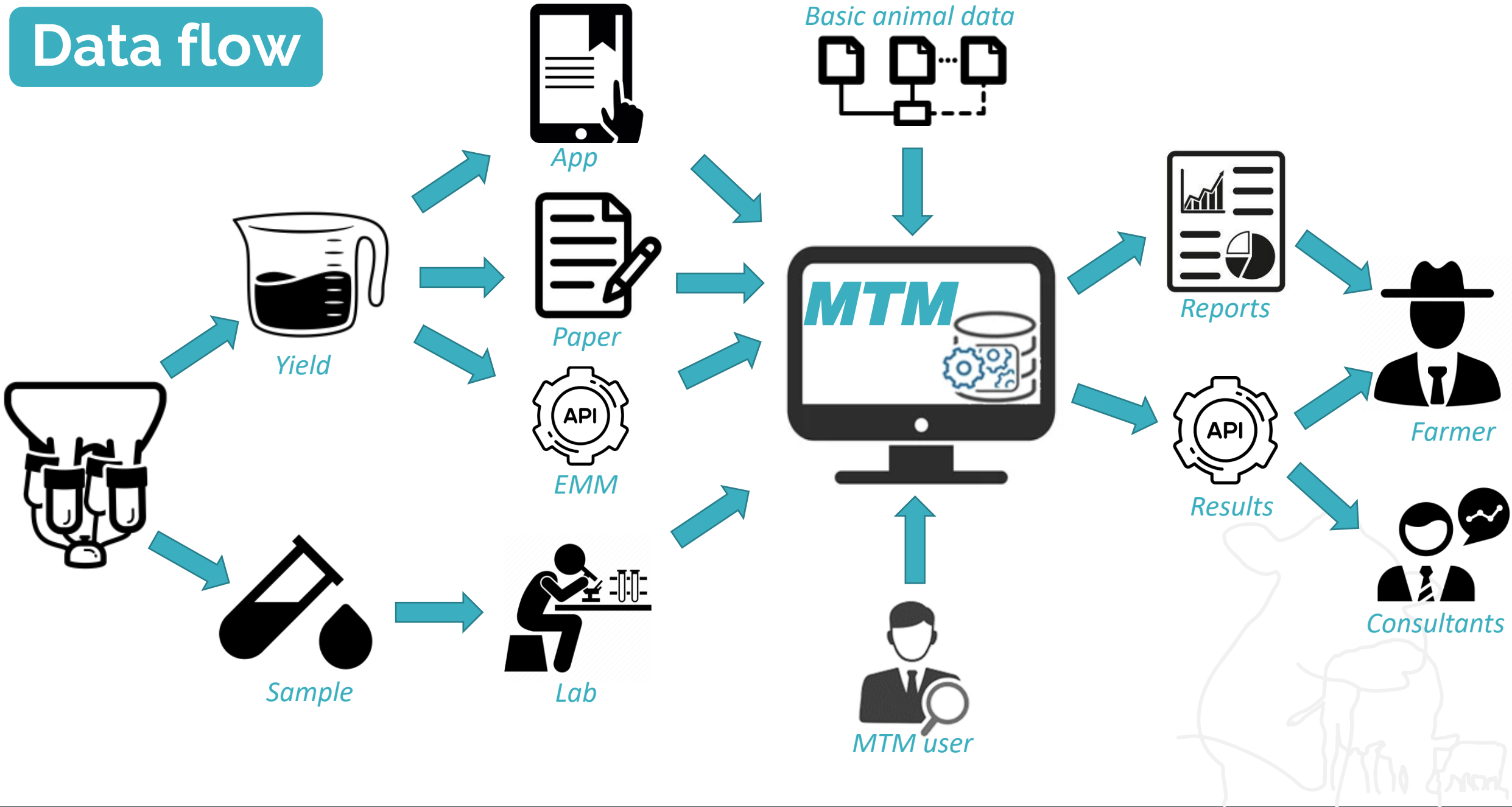
generate results and calculate important KPI's and attentions

*before*

Distributing it to farmers and consultants.



# Data flow





# Key features

- CRM
- Planning
- Sampling app
- Data processing
- Calculations based on ICAR guidelines
- Reporting
- Links



# Key features

- CRM
- Planning
- Sampling app
- Data processing
- Calculations based on ICAR guidelines
- Reporting
- Links





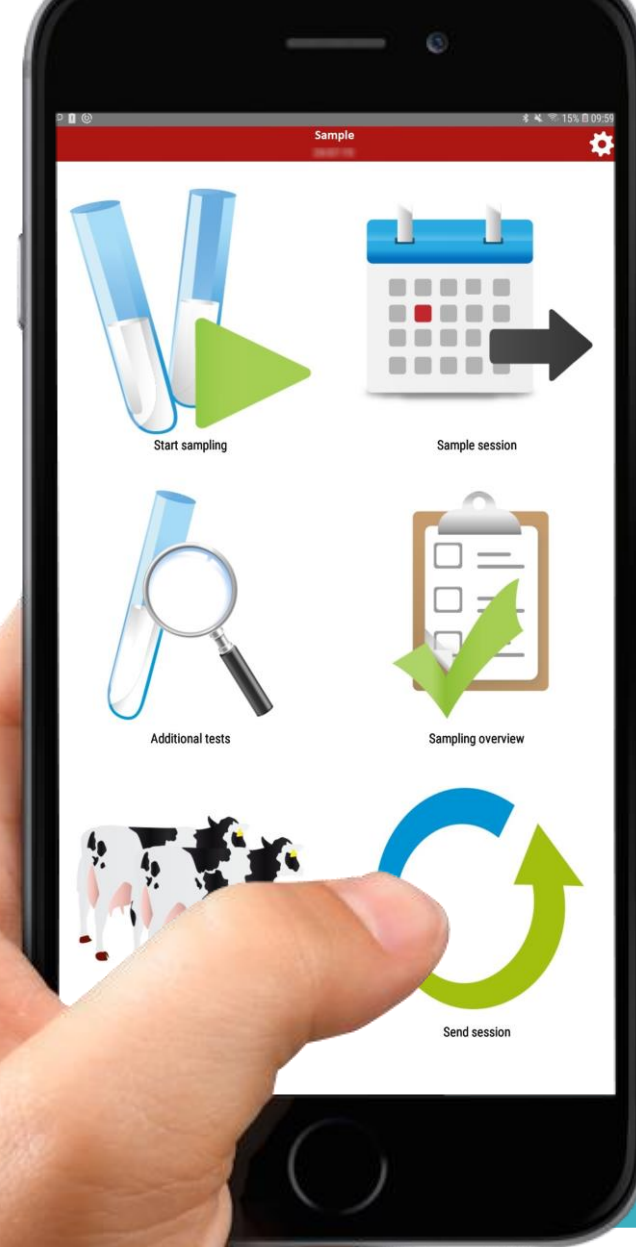
# Key features

- CRM
- **Planning**
- Sampling app
- Data processing
- Calculations based on ICAR guidelines
- Reporting
- Links

The screenshot displays the MELKCONTROLE NIJLAND software interface. The main window is titled "Planned" and shows a calendar view for the week of May 15-20, 2023. The calendar is organized by sampler (rows) and time slots (columns). The samplers listed are AB, JD, EE, HE, HG, AP, JR, MT, FV, BW, WOU, and DHZ. The time slots are categorized by day and time: Mon 15-05 (Evening, Morning), Tue 16-05 (Evening, Morning), Wed 17-05 (Evening, Morning), Thu 18-05 (Evening, Morning), Fri 19-05 (Evening, Morning), and Sat 20-05 (Morning). Various tasks are assigned to specific time slots, such as "Dhr. J.A. Oenema" on Monday morning, "Fam. J. & G. de Vries-Verburg" on Wednesday evening, and "Vof Haanstra" on Friday evening. A sidebar on the right contains a search bar, a list of tasks with dates and days, and an "Info" section with fields for Status, Date, Sampler, Farm name, UBN, Street, Postalcode + City, Phonenumber, e-Mail, Company, Recognition, Preferred day, Preferred sampler, Previous sampler, Deny sampler, Material, Milking 1 start, Milking 1 end, Milking 2 start, Milking 2 end, Last mcdte, Frequency, and Notes. At the bottom of the sidebar are buttons for "Delete", "MPR settings", "Save concept", "To farm overview", "Confirm", and "Properties".

# Key features

- CRM
- Planning
- **Sampling app**
- Data processing
- Calculations based on ICAR guidelines
- Reporting
- Links



# Key features

- CRM
- Planning
- Sampling app
- **Data processing**
- Calculations based on ICAR guidelines
- Reporting
- Links



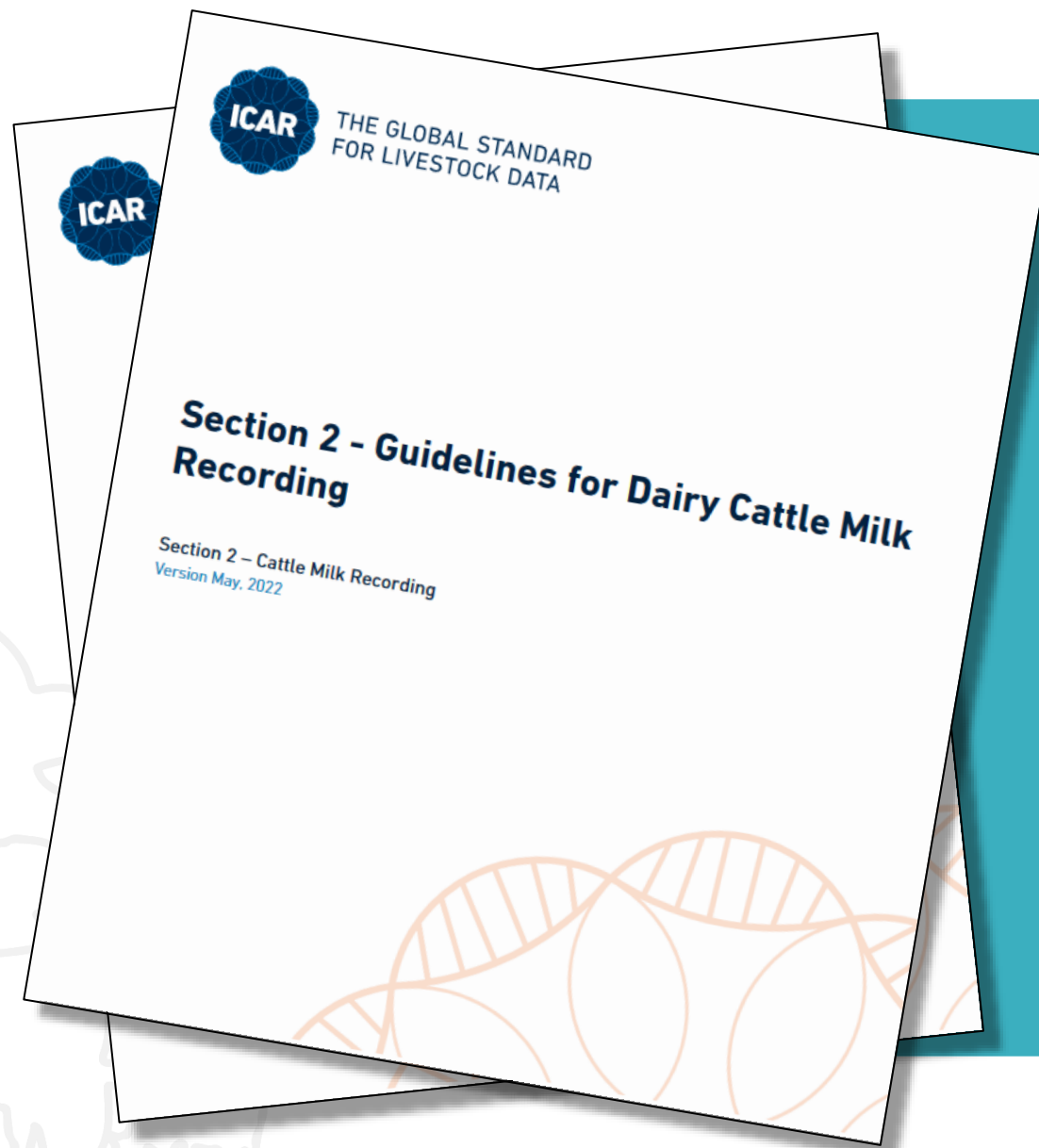
## Data sources:

- Lab machines
- Milk robots
- EMM
- App data
- Processing from paper
- Validation



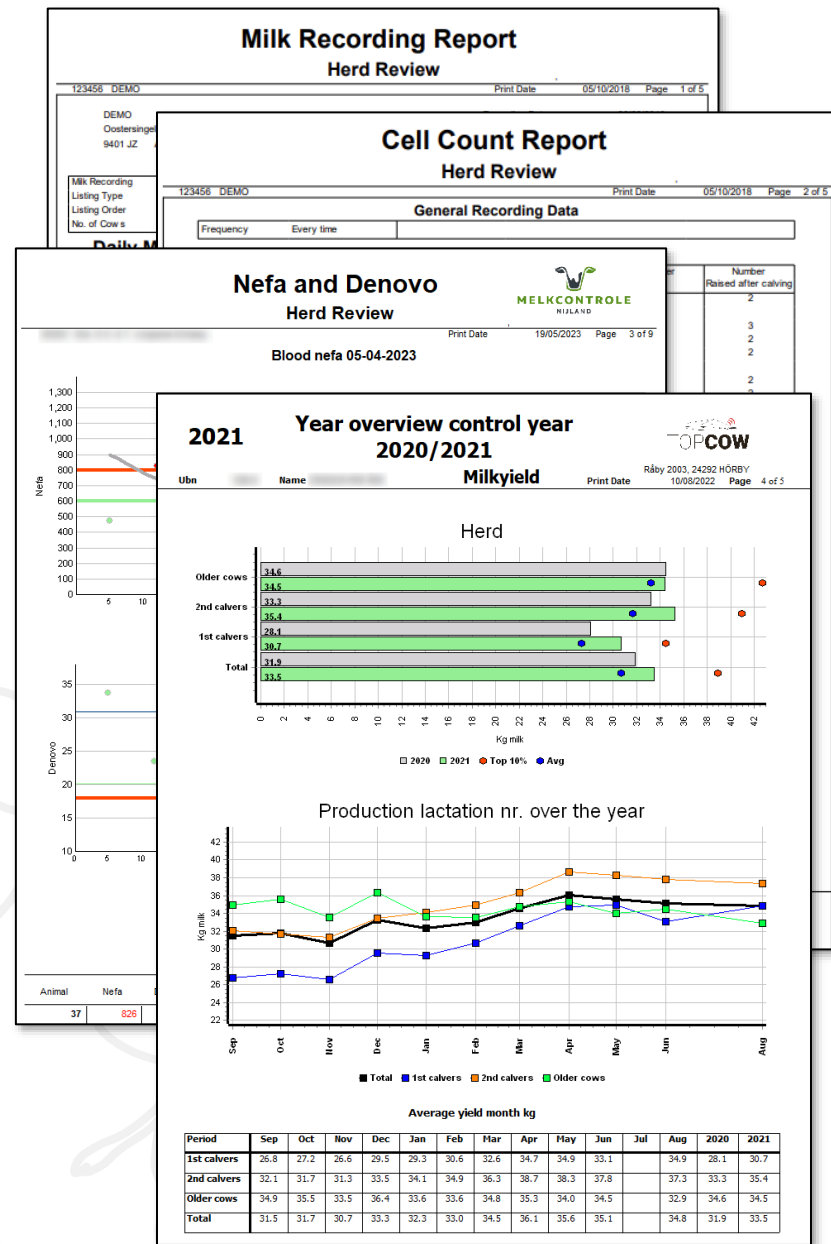
# Key features

- CRM
- Planning
- Sampling app
- Data processing
- **Calculations based on ICAR guidelines**
- Reporting
- Links



# Key features

- CRM
- Planning
- Sampling app
- Data processing
- Calculations based on ICAR guidelines
- **Reporting**
- Links

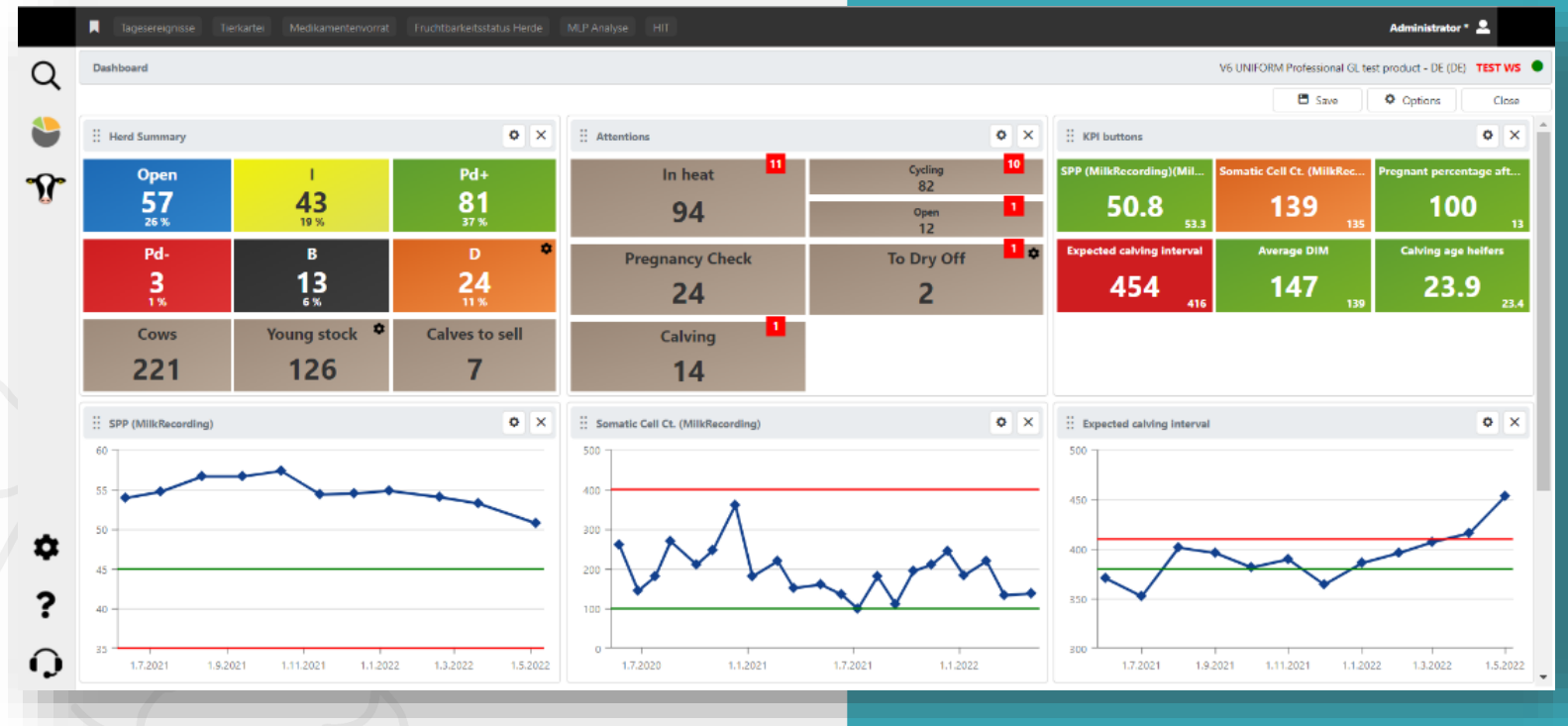


For example:

- Milk recording results
- Cell count reporting
- Fatty acids and Blood NEFA reporting
- Year reports
- Additional reports regarding; closed lactations, farm visits, >100.000kg productions
- And more.

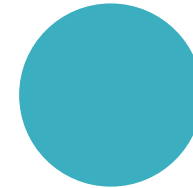
# Key features

- CRM
- Planning
- Sampling app
- Data processing
- Calculations based on ICAR guidelines
- Reporting
- **Links**

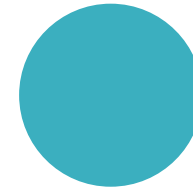




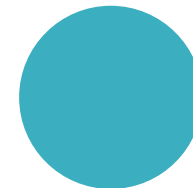
# Benefits & opportunities



MRO



Lab machine  
manufacturers



Farmers &  
Consultants

# Questions? Come talk to us!

