



THE GLOBAL STANDARD
FOR LIVESTOCK DATA



IRISH CATTLE BREEDING FEDERATION

Overview of Interbeef.



Thierry Pabiou (ICBF).



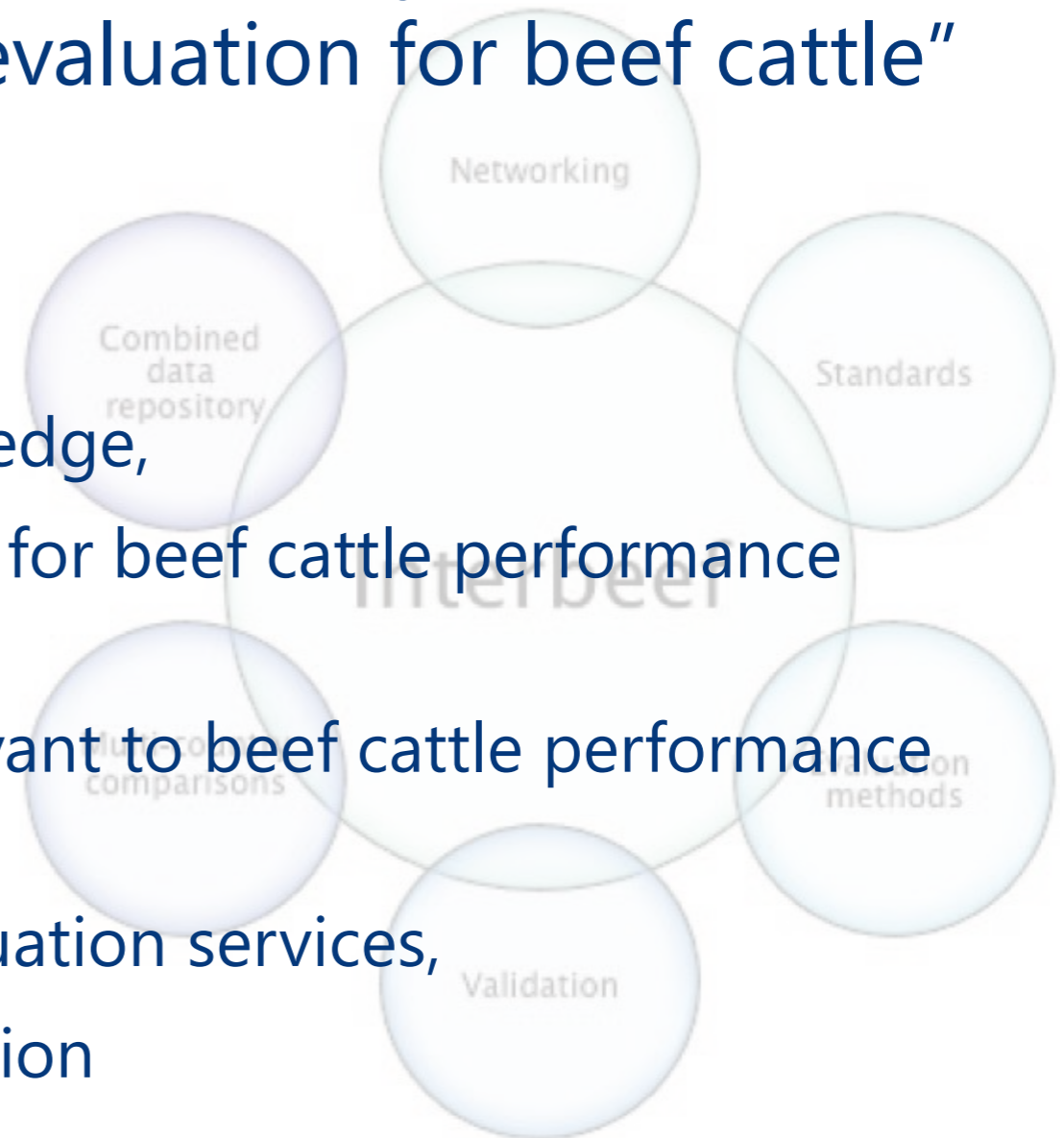
Department of
**Agriculture,
Food and the Marine**
An Roinn
**Talmhaíochta,
Bia agus Mara**

What is Interbeef.

“Some countries bringing together phenotypes and pedigree into a unique genetic evaluation for beef cattle”

5 objectives

- To provide a forum for sharing knowledge,
- To maintain guidelines and standards for beef cattle performance recording,
- To conduct international surveys relevant to beef cattle performance recording,
- To develop international genetic evaluation services,
- To facilitate the use of genomic selection



In the beginning

- 2001: EUBEEVAL
- 3 countries    
- 2 breeds: Charolais & Limousin
- Plenty of motivation & energy!
 - Flat files
 - Solving ID issues





Interbeef today

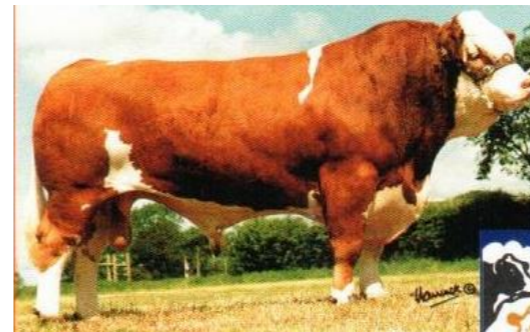
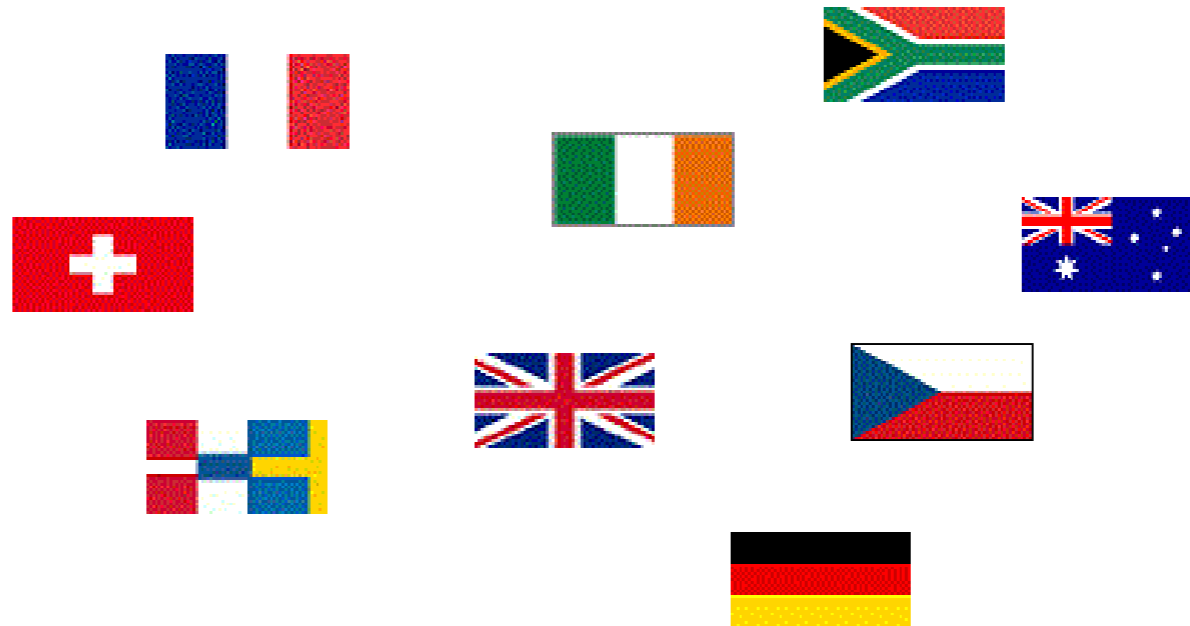


- ICAR working group (2005)
- Business plan
 - Technical committee
 - Working group
 - Scientific committee
- Protected name (2010)
- Central IDEEA database (2011)



Who's on board?

- 9 countries
- 5 breeds



- Plenty of projects
- Still plenty of energy!



Current evaluation



- 2 routine runs : January & September
 - 2 evaluations / run : calving & weaning weight
 - At the Interbull center
- 2 test runs : March & October
 - To ‘test’ changes in model, adding new traits/breed/country
 - At the Interbull center



Interbeef phenotypes[#]



| | Limousine | | | Charolaise | | | Simmental |
|----------------------------|-------------|---------------|--------------|-------------|---------------|--------------|-------------|
| | Wea. Weight | Calving score | Birth weight | Wea. Weight | Calving score | Birth weight | Wea. Weight |
| France | 2,730,993 | 4,962,960 | 4,992,395 | 4,572,219 | 8,738,175 | 8,750,706 | |
| Ireland⁺ | 213,462 | 214,350 | 19,532 | 332,171 | 222,072 | 38,320 | 30,802 |
| Great Britain | 137,274 | 154,984 | 204,011 | | | | |
| Germany | 89,828 | | | 92,640 | | | 112,751 |
| Switzerland | 36,440 | | | 12,007 | | | 10,610 |
| Czech Republic | 12,679 | 17,756 | 17,756 | 39,320 | 59,149 | 59,149 | |
| DFS* | 91,628 | 281,185 | 211,645 | 173,423 | 298,493 | 271,760 | 72,675 |
| Australia | 67,160 | | | 72,389 | | | |

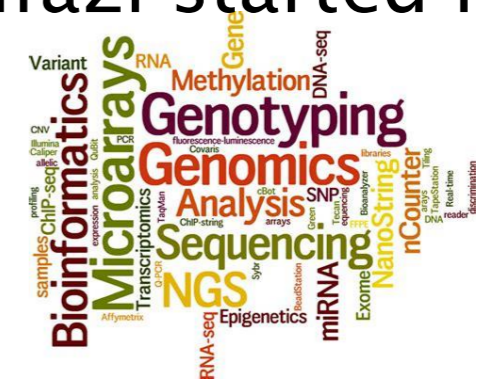
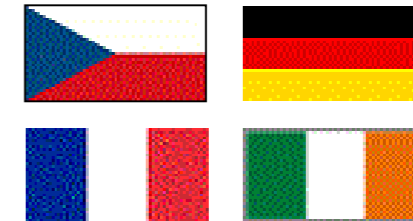
[#] September 2018 routine run numbers except for Ireland & Australia (January 2019 routine run numbers)

⁺ Including data from crossbred calves

DFS* = Denmark, Finland, Sweden

In the pipeline

- 4 main current research partners:
 - Innovative research model.
- Current running research topics;
 - Female fertility
 - Carcass traits
- Hot topic
 - Central repository for phenotypes created April 2019
 - Using genomic information : Renzo Bonifazi started his PhD in September 2018 (WUR - NLD)





Why Is Interbeef important for Ireland => Finding the Best Bulls.

The screenshot shows the ICBF website header with the logo and name 'Irish Cattle Breeding Federation'. Below the header is a navigation menu with links for Home, News, Genetic Evaluations, HerdPlus, Services, Publications, and About ICBF. The main content area is titled 'International Beef Evaluation (Interbeef)'. Underneath, there is a section for 'International Beef Evaluation (Interbeef) Files Jan 2019' with two sub-links: 'Weaning Weight (Jan 2019)' and 'Calving Ease (Jan 2019)'.

- https://www.icbf.com/wp/?page_id=13498



Proofs available to AI companies & Breeders.

| Evaluatio | Bull tag | Bull year of genotypir | Weaning weight | | | | AI usage | |
|-----------|---------------------|------------------------------|----------------|------|----------|------|-----------------|---------|
| | | | Direct | | Maternal | | Country | Irish |
| | | | EBV | Rel. | EBV | Rel. | of use as AI | AI code |
| CHA | CHAFRAM007121321470 | | 146 | 75% | 123 | 61% | DFS,FRA,IRL | SUX |
| CHA | CHAFRAM007121216487 | | 143 | 62% | 122 | 37% | FRA | |
| CHA | CHAFRAM004807005638 | 2015 | 141 | 89% | 133 | 76% | CZE,FRA,IRL | CH2218 |
| CHA | CHAIRLM221222841193 | 2014 | 140 | 61% | 96 | 28% | | |
| CHA | CHAFRAM007957090255 | | 140 | 75% | 155 | 64% | CZE,DFS,FRA,IRL | S1207 |
| CHA | CHAFRAM005895104725 | | 139 | 77% | 73 | 38% | | |
| CHA | CHAFRAM004527660269 | | 138 | 67% | 122 | 46% | FRA | |
| CHA | CHAFRAM000393100604 | 2016 | 136 | 83% | 99 | 72% | DFS,FRA,IRL | IGO |
| CHA | CHAFRAM005703555188 | 2016 | 136 | 74% | 152 | 58% | CZE,FRA | |
| CHA | CHAFRAM005249296732 | | 135 | 71% | 144 | 55% | FRA | |
| CHA | CHAFRAM000314552066 | | 135 | 55% | 109 | 20% | | |
| CHA | CHAFRAM005810401501 | 2015 | 135 | 84% | 93 | 66% | FRA,IRL | SDA |
| CHA | CHAIRLM131485330266 | 2013 | 134 | 62% | 90 | 15% | | |
| CHA | CHAFRAM008592103408 | | 134 | 77% | 123 | 67% | CZE,DFS,FRA | |

Conclusion

- Interbeef machinery is in place.
- Business model allows research to progress.
- Genomic is round the corner.
- Real power;
 - finding the best bull for farmers/industry.
 - In the most accurate way.

