



# Using Random Forests As A Prescreening Tool for Genomic Prediction: Impact of Subsets of SNPs on Prediction Accuracy of Total Genetic Values

Yutao Li, Fernanda Raidan, Bo Li, Zulma Vitezica and Toni Reverter

CSIRO AGRICULTURE & FOOD  
[www.csiro.au](http://www.csiro.au)



# Why Machine Learning Methods Become Popular in Large Genomic Data Analyses ?

- Dealing with “*Large P and Small N*” problem
- **Black–box** approaches (**No prior knowledge** required)
- Taking **multiple interactions or correlations among predictor variables** (e.g. SNP-SNP interactions) into account
- **High prediction accuracy** (building training and validation procedures into algorithms)

# Knowledge Gap in Genomic Prediction of Total Genetic Values

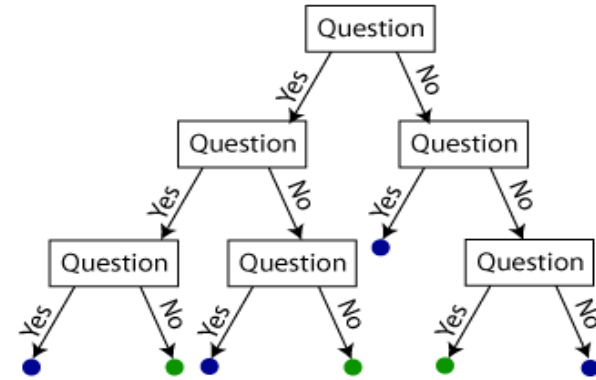
- Do non-additive effects captured by machine learning methods contribute to the prediction accuracy of **total genetic values** ?



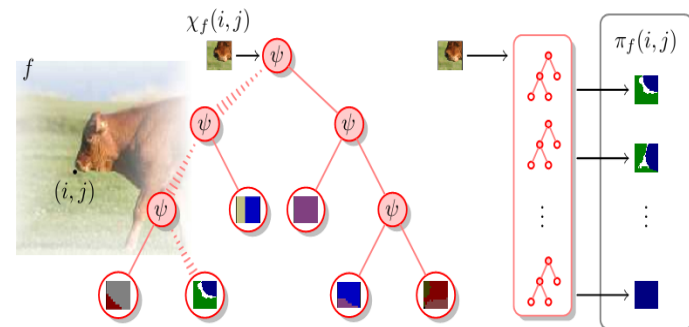
**(additive +dominance genetic values)**

# Machine Learning Method – Random Forests (RF)

- Leo Breiman, *Random Forests*, Machine Learning, 45, 5-32, 2001.
- A nonparametric tree-based ensemble machine-learning method for classification or regression of multiple variables.

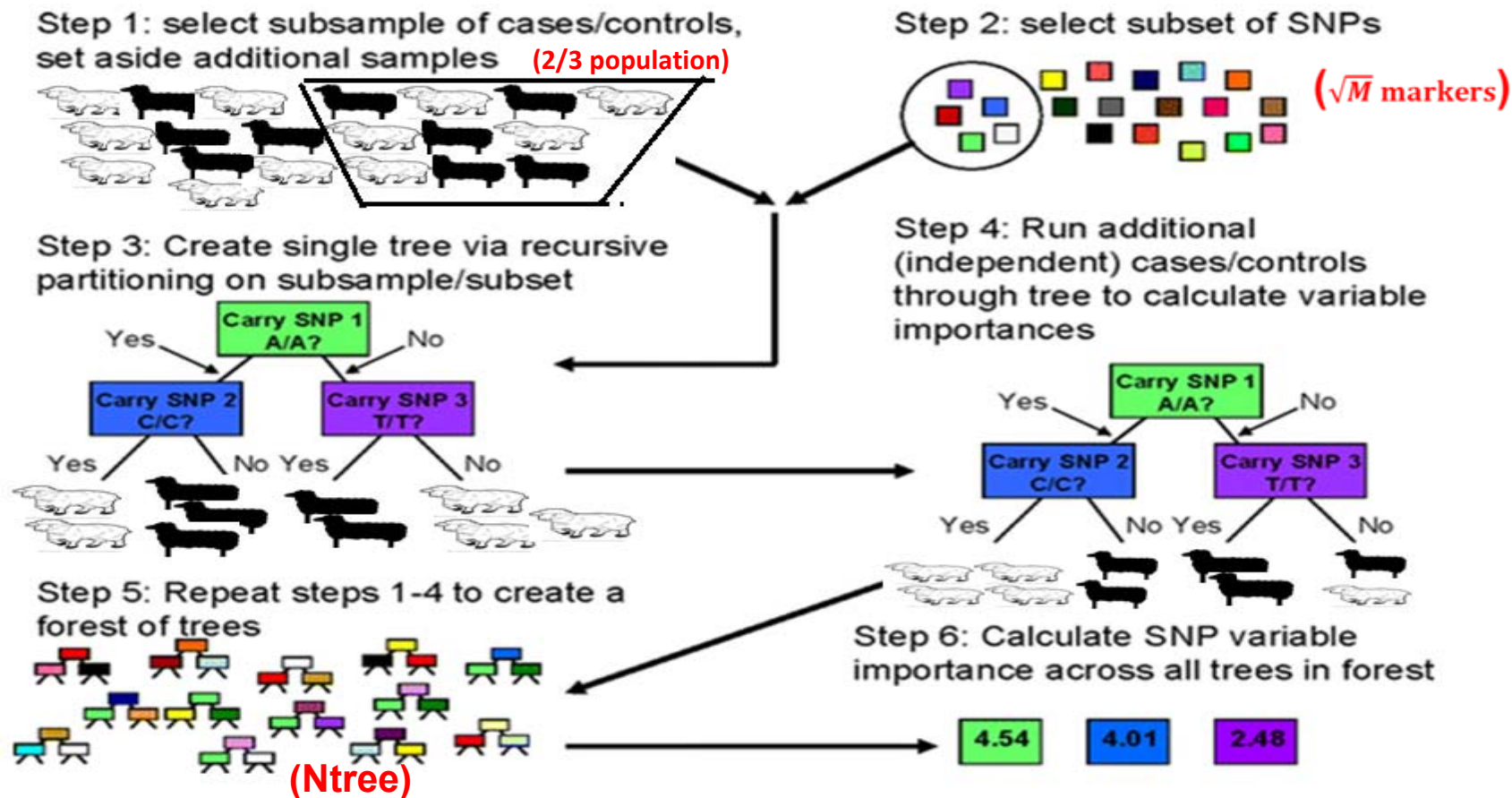


<http://shapeofdata.wordpress.com/2013/07/09/random-forests/>



<http://pdollar.wordpress.com/2013/03/08/structured-random-forests/>

# Random Forests – How Does It Work?



Nicodemus et al. 2010. Hum Genet 127:441-452.

# SNP Variable Importance Value (VIM)

- RF: **%IncMSE** (% Increasing in Mean Squared Error when a SNP is not included)

**Larger the value, the more important the SNP is**

# Beef CRC Cattle Dataset

- 2,109 Brahman Cattle
- 651,253 SNPs (MAF > 0.01)
- Phenotype – Yearling Weight (**pre-adjusted** for average heterozygosity of SNPs, contemporary group and age effects)

# Application of RF in Identifying Subsets of SNP for Genomic Prediction

For each data set, *using 80% Brahman cattle*

Identify Top 500,1000, ... 50,000 SNP Using VIM Values from RF

*Using 20% Brahman cattle*

Predict  $\sigma_a^2$   
and  $h^2$   
values:

GBLUP:  $y = X\beta + Zu + e$

$V(u) = G\sigma_u^2$  and  $V(e) = I\sigma_e^2$

$$G = \frac{MM^T}{2\sum p_i(1-p_i)}$$

Dominance  
Model

$$y = \mathbf{1}_n\mu + Xb + \text{het}\beta + g + d + e,$$

The average  
heterozygosity of  
each animal

Genomic breeding  
values  
 $N \sim (0, GRM\sigma_a^2)$

Dominance  
deviations  
 $N \sim (0, DRM\sigma_d^2)$

Genomic prediction accuracy of total genetic values



# Variance Estimates from Subsets of SNPs

## (RF Selected vs Evenly Spaced vs All SNPs)

	Additive Model			Additive + Dominance Model			
	$h_a^2$	$\sigma_a^2$	ACC	$h_a^2$	$\sigma_a^2$	$\sigma_d^2$	ACC
<b>RF</b>							
500	<b>0.21</b>	140.3	<b>0.45</b>	<b>0.21</b>	140.1	14.2	<b>0.45</b>
1,000	<b>0.26</b>	171.6	<b>0.49</b>	<b>0.26</b>	171.7	24.2	<b>0.49</b>
5,000	<b>0.39</b>	254.9	<b>0.55</b>	<b>0.39</b>	253.4	58.0	<b>0.55</b>
50,000	<b>0.45</b>	299.0	<b>0.60</b>	<b>0.44</b>	294.0	205.1	<b>0.60</b>
<b>Even</b>							
500	<b>0.04</b>	24.8	<b>0.18</b>	<b>0.03</b>	24.8	0.8	<b>0.18</b>
1,000	<b>0.03</b>	25.8	<b>0.21</b>	<b>0.03</b>	23.5	2.2	<b>0.21</b>
5,000	<b>0.09</b>	58.9	<b>0.24</b>	<b>0.08</b>	58.6	15.7	<b>0.24</b>
50,000	<b>0.34</b>	236.5	<b>0.29</b>	<b>0.34</b>	234.2	55.6	<b>0.29</b>
<b>All SNPs</b>	<b>0.38</b>	259.4	<b>0.44</b>	<b>0.38</b>	258.4	49.9	<b>0.44</b>

# Conclusions

- Fitting dominance into the genomic model had **little impact on the accuracy of genomic prediction** of breeding values.
- RF has **potential** to be used as a pre-screening tool for:
  - a) **reduction of high dimensionality** associated with large genomic data;
  - b) identification of **subsets of useful SNPs** for **genomic prediction** of breeding values.

# Application of RF in Identifying Subsets of SNP for Genomic Prediction of Cattle Live Weight

**Fine-Tuning RF Parameters**

*Ntree* = 10,000, 12,000, ...20,000  
*mtry* =  $\sqrt{M}$ ,  $2*\sqrt{M}$  (*M*: total no. SNPs)



**Random 5-fold cross-validation scheme:**

- Identify Top 500,1000, ... 50,000 SNP Using VIM Values from RF
- Genomic prediction accuracy of total genetic values

# GRM and DRM Calculations

$$G = \frac{Z_a Z_a'}{2 \sum_{k=1}^m p_k q_k}$$

- $Z_a$  ( $n \times m$ )
  - $\left\{ \begin{array}{ll} 2 - 2p_k & \text{(AA)} \\ 1 - 2p_k & \text{(AB) (VanRaden et al., 2008)} \\ -2p_k & \text{(BB)} \end{array} \right.$
- $p_k$  - minor allele frequency of locus  $k$

$$D^* = \frac{Z_d Z_d'}{4 \sum_{k=1}^m p_k^2 q_k^2}$$

- $Z_d$  ( $n \times m$ )
  - $\left\{ \begin{array}{ll} 2q_k^2 & \text{(AA)} \\ 2p_k(1 - p_k) & \text{(AB) (Vitezica et al., 2013)} \\ -2p_k & \text{(BB)} \end{array} \right.$
- Matrix  $D^*$  was the combined with identity matrix  $I$  as  $D = 0.95D^* + 0.05I$  to improve numerical stability

# Variance Estimates from Subsets of SNPs

## RF Selected vs Evenly Spaced vs All SNPs

	Additive Model			Additive + Dominance Model			
	$h_a^2$	$\sigma_a^2$	% Total $\sigma_a^2$	$h_a^2$	$\sigma_a^2$	$\sigma_d^2$	$\sigma_p^2$
<b>RF</b>							
500	<b>0.21 (0.03)</b>	140.3 (22.8)	667.0 (26.5)	<b>0.21 (0.08)</b>	140.1 (22.7)	14.2 (8.6)	668.1 (26.2)
1,000	<b>0.26 (0.03)</b>	171.6 (25.0)	658.8 (26.1)	<b>0.26 (0.03)</b>	171.7 (25.0)	24.2 (11.4)	660.2 (26.2)
5,000	<b>0.39 (0.04)</b>	254.9 (32.7)	658.2 (26.3)	<b>0.39 (0.04)</b>	253.4 (32.5)	58.0 (21.3)	658.9 (26.4)
50,000	<b>0.45 (0.04)</b>	299.0 (38.7)	669.2 (26.7)	<b>0.44 (0.05)</b>	294.0 (38.3)	205.1 (60.8)	670.3 (27.5)
<b>Even</b>							
500	<b>0.04 (0.02)</b>	24.8 (14.2)	691.0 (26.1)	<b>0.03 (0.02)</b>	24.8 (8.7)	0.8 (1.7)	691.8 (24.9)
1,000	<b>0.03 (0.02)</b>	25.8 (14.4)	691.6 (25.9)	<b>0.03 (0.02)</b>	23.5 (12.6)	2.2 (5.1)	690.3 (25.5)
5,000	<b>0.09 (0.03)</b>	58.9 (21.2)	703.3 (27.8)	<b>0.08 (0.03)</b>	58.6 (21.2)	15.7 (15.6)	705.7 (28.2)
50,000	<b>0.34 (0.05)</b>	236.5 (38.7)	690.0 (26.5)	<b>0.34 (0.05)</b>	234.2 (45.7)	55.6 (51.8)	689.8 (26.9)
<b>All SNPs</b>	<b>0.38 (0.05)</b>	259.4 (38.4)	680.9 (26.5)	<b>0.38 (0.05)</b>	258.4 (38.2)	49.9 (33.5)	680.5 (26.5)

# Genomic Prediction Accuracy of Total Genetic Values

	Additive Model	Additive + Dominance Model
	Acc	Acc
RF		
500	0.45	0.45
1,000	0.49	0.49
5,000	0.55	0.55
50,000	0.60	0.60
Even		
500	0.18	0.18
1,000	0.21	0.21
5,000	0.24	0.24
50,000	0.29	0.29
All SNP	0.44	0.44