

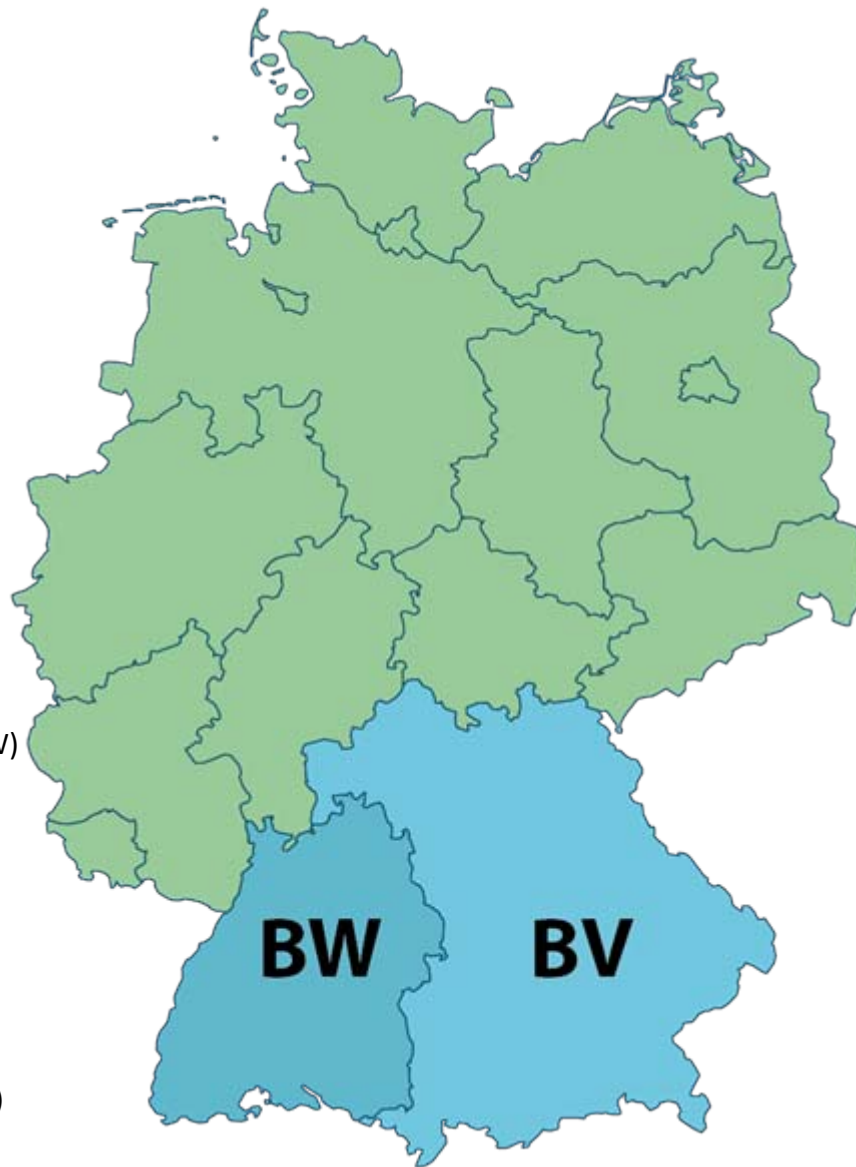
# IT-Network-Solution for goat performance data recording and herdbook in Bavaria and Baden-Württemberg (Ziegendatenverbund, ZDV)

- Joint project of Bavaria and Baden-Wuerttemberg -

*K. Drössler & F. Gollé-Leidreiter*

*Landesverband Baden-Württemberg für Leistungs- und Qualitätsprüfungen in der Tierzucht e.V. (LKV BW), P.O. Box 13 09 15, 70067 Stuttgart, Germany*

# ZDV partner organizations (I)



# ZDV partner organizations (II)



## MRO Bavaria

Farms: 56  
Goats: 4 140  
Herd size: 74



## BA Bavaria

Farms: 390  
Goats: 3 500



## MRO Baden-Württemberg

Farms: 62  
Goats: 2 104  
Herd size: 34



## BA Baden-Württemberg

Farms: 320  
Goats: 2 300

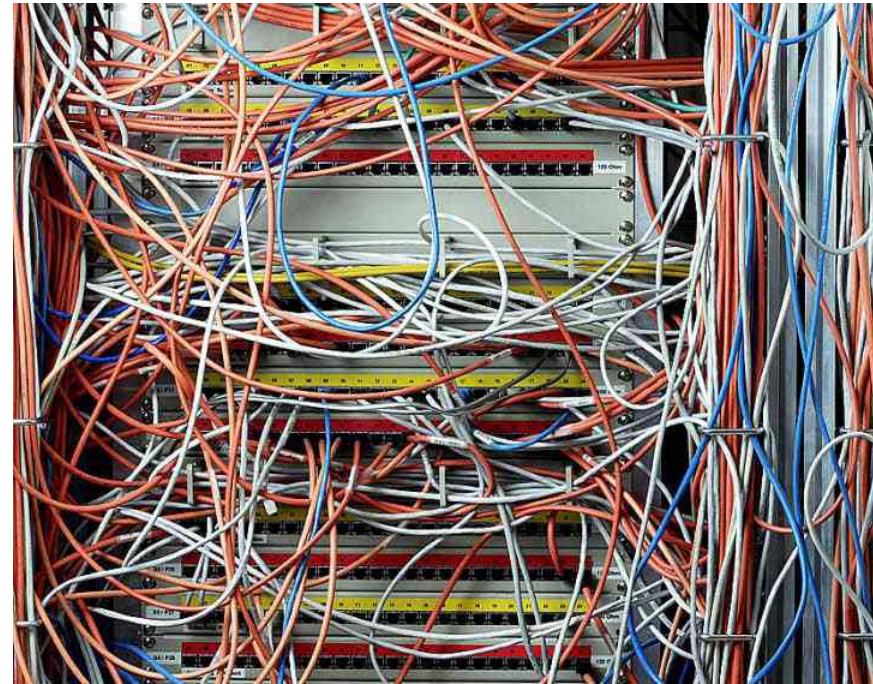
# Forming of an alliance for the software development due to:

- Small populations
- Low financial means

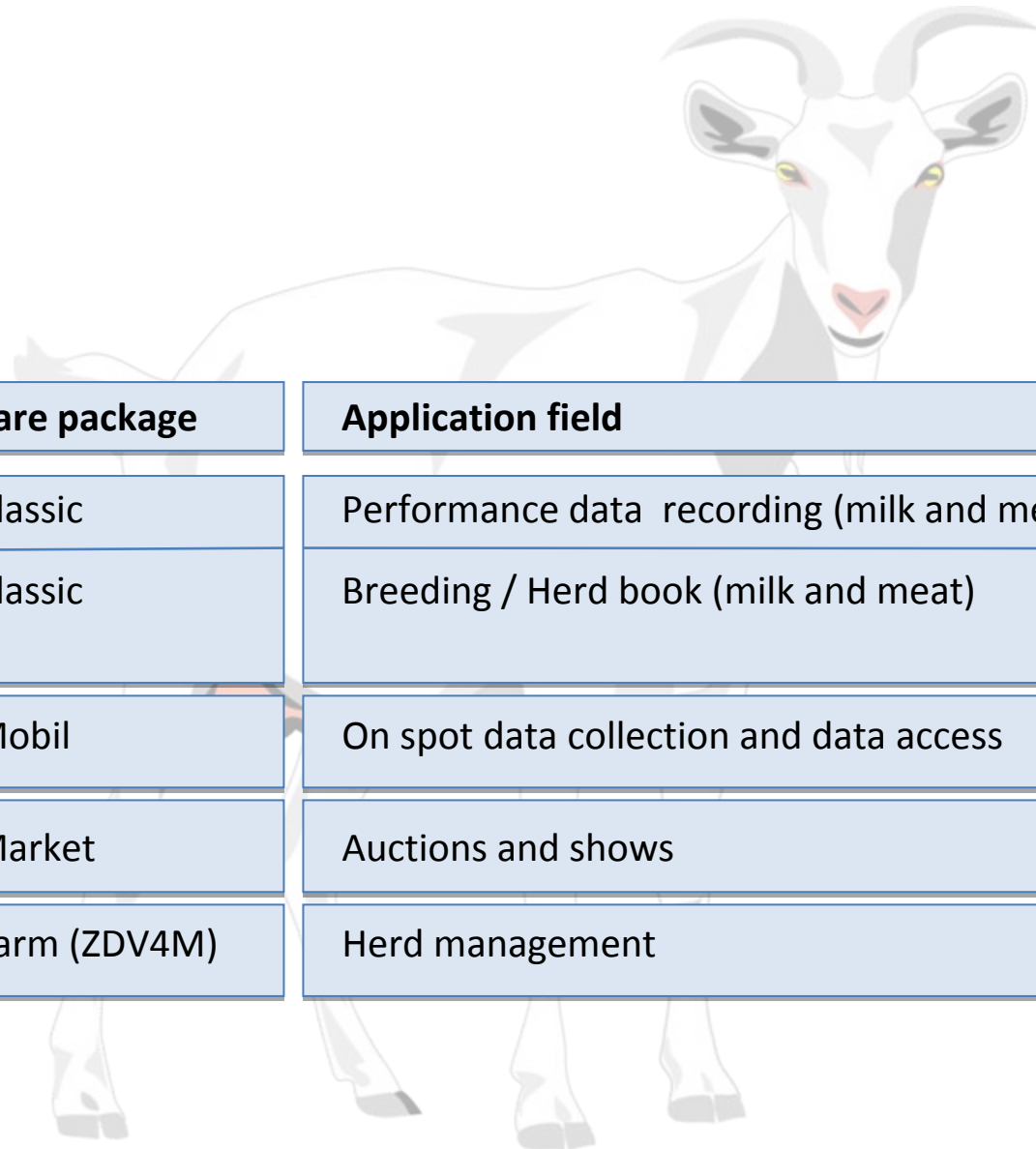


## The ZDV is built on base of the RDV

- ▶ 1 group of developing IT-software engineers
  - ▶ 1 common data model
  - ▶ 2 separate IT-departments
  - ▶ 2 Oracle data bases
  - ▶ Automatic data transfer via interfaces
- 
- Decentralized, flexible IT-solution for local appliance and services



# Software packages, field of application and users of the ZDV

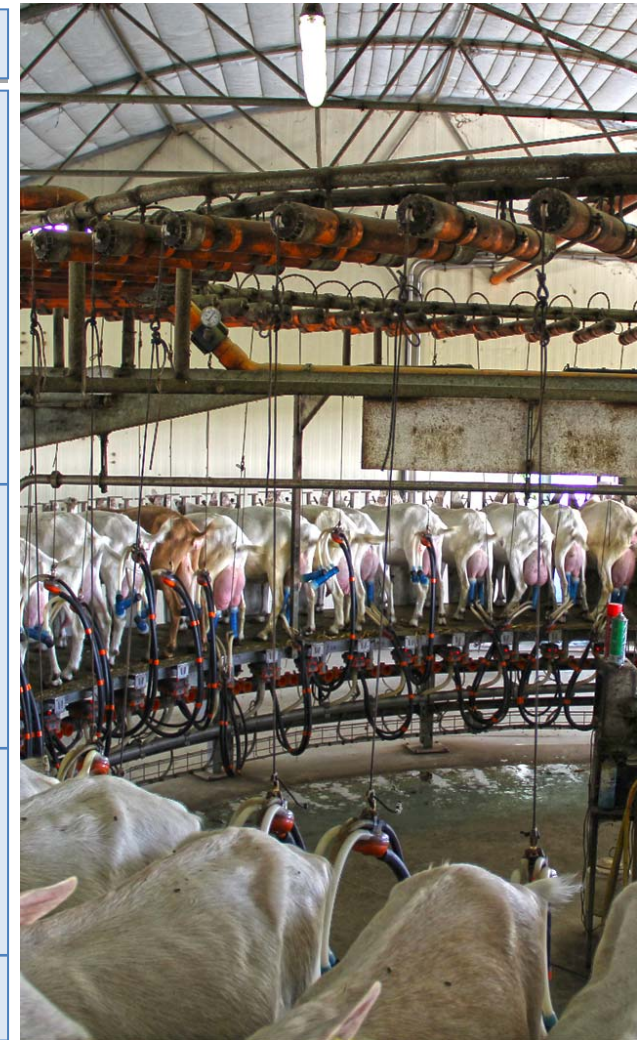


Software package	Application field	User
ZDV-Classic	Performance data recording (milk and meat)	MRO
ZDV-Classic	Breeding / Herd book (milk and meat)	Breeding organization (BA)
ZDV-Mobil	On spot data collection and data access	MRO, BA
ZDV-Market	Auctions and shows	BA
ZDV-Farm (ZDV4M)	Herd management	Farmer, Adviser



# ZDV-Classic Modules (I): Central platform for MRO's

Software module	Application field
Animal	Data storage of: <ul style="list-style-type: none"><li>▶ Animal core data</li><li>▶ Natural matings</li><li>▶ Lambings</li><li>▶ Individual performance data</li></ul> Data analysis of: <ul style="list-style-type: none"><li>▶ Animal data</li></ul>
Herd	Data storage of: <ul style="list-style-type: none"><li>▶ Herd core data</li></ul> Data analysis of: <ul style="list-style-type: none"><li>▶ Herd core data</li></ul>
Administration	Administration of: <ul style="list-style-type: none"><li>▶ Members</li><li>▶ Employees</li></ul>
Processing	Unit for the processing of all accumulated data



# ZDV-Classic Modules (II): Central platform for BA's

Software module	Application field
Breeding	Selection of: <ul style="list-style-type: none"><li>▶ Billy goat mothers</li><li>▶ Billy goats</li><li>▶ Offspring</li></ul>
Administration	Administration of: <ul style="list-style-type: none"><li>▶ Members</li><li>▶ Employees</li></ul>
Auction	Organization and implementation of: <ul style="list-style-type: none"><li>▶ Auctions</li><li>▶ Shows</li></ul>





# ZDV-Mobil: Online application for technicians of MRO's and BA's

User	Application field
BA technician	Data overview, correction and storage <ul style="list-style-type: none"><li>▶ Verification of pedigree</li><li>▶ Evaluation of goats</li><li>▶ Herd book classification</li></ul>
MRO technician	Data overview, correction and storage <ul style="list-style-type: none"><li>▶ Performance data</li></ul>

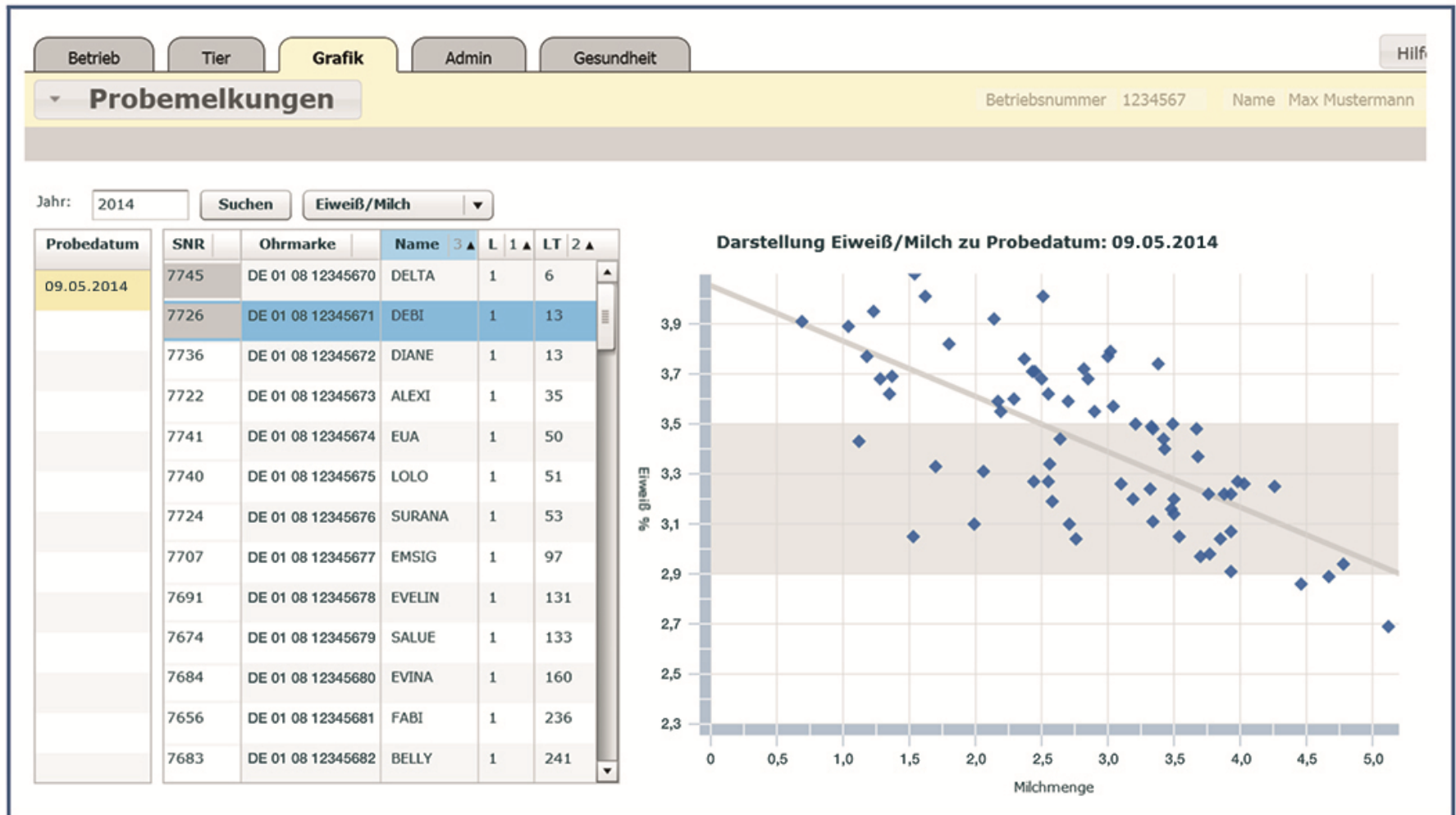


# ZDV-Market: Application for auctions and exhibitions

User	Application field
BA	Listing of: <ul style="list-style-type: none"><li>▶ Seller and animals for sale</li><li>▶ Exhibitors and animals for exhibitions</li></ul>
	Print of: <ul style="list-style-type: none"><li>▶ Sales catalogue</li><li>▶ Exhibition catalogue</li></ul>
	Implementation of: <ul style="list-style-type: none"><li>▶ Evaluation of animals</li><li>▶ Classification of animals</li><li>▶ Processing of sales</li></ul>



# ZDV4M-Modules (I): Herd management and analysis for goat farmers „Module Herd“



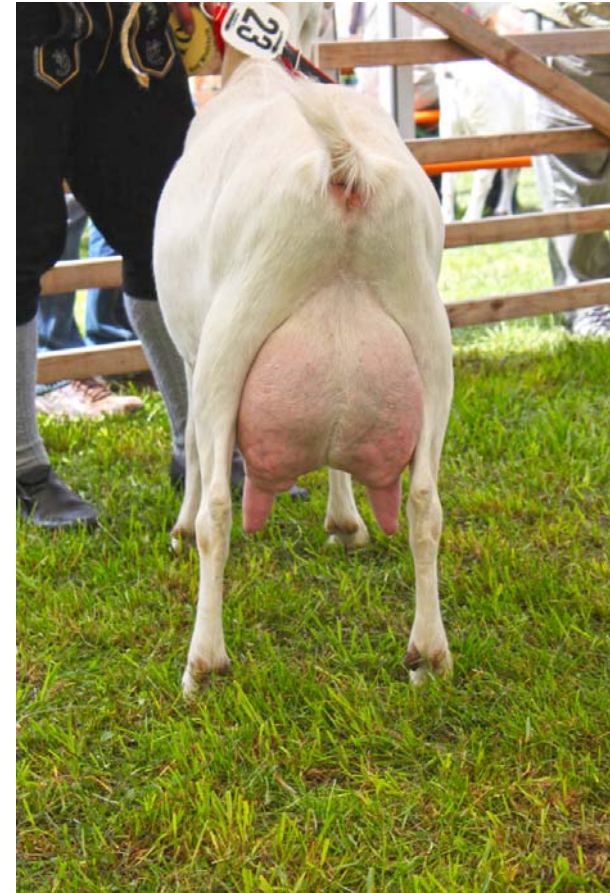
# ZDV4M-Modules (II): Herd management and analysis for goat farmers “Module Animal”

LEBENSNR		DE	01 08 00247164	NAME	REIBE	H-NR.		
18.01.2008		Geschlecht: W Rasse: 51 Nutzungsart: K		LFBIS_LKVN	2006057	ST.NR.	38	
V: ZAPATERO DE 01 08 0002346 2	V: RAPOLLO DE 01 08 0002342 1	V: ZÜNDER BW 31.557	V: JOHNSON UB 517	V: CID BW 1603987205	M: ECUME BW 6303589005			
		M: RAPSODY 56 BW 28.272	M: ZÜNDHOLZ BW 27.647	V: CASTRO BW 20.205	M: ZOEPFCHEN 17 BW 17.183			
			V: LANCEUR UB 138	V: FADA UB 163	M: LISETT UB 274			
			M: RACHEL BW 9.751	V: MIKO BW 101.193	M: RACHITI BW 7.233			
			V: FERRERO BW 15.478					
			M: JENNIFER BW 15.479					
	M: REBLI BW 27.654	V: CASTRO BW 20.205	M: ZOEPFCHEN 17 BW 17.183	V: NEPER BW 42.202	V: NILS BW 1.955	M: HELENE BW 30.213		
				M: ZOERNLE BW 3.380	V: PAN BW 832	M: ZILLI BW 113.030		
				V: COURLYS BW 15.375	V: BELPHEGOR BW 15.369	M: VALSE BW 15.370		
				M: MARLENE BW 4.458	V: PHANTAST BW 152.184	M: MONA BW 130.003		
				V: NEPER BW 42.202	V: NILS BW 1.955	M: HELENE BW 30.213		
				M: RESI BW 3.290	V: EMIL BW 738	M: ROLLI BW 3.211		
M: REBE BW 12.512		V: NEPER BW 42.202	V: NILS BW 1.955					
			M: HELENE BW 30.213					
			V: EMIL BW 738	V: ESROM BW 661	M: BRIGITTE BW 2.568			
			M: ROLLI BW 3.211	V: RUDI BW 603	M: ROMA BW 2.643			



# Future development of the ZDV

- Registration and integration of animal health data
- ZDV-App
- ZDV-Feed, software package for feed ration calculations
- estimation of breeding values



*Thank you  
for your attention!*

